

CATALOGUE

—OF—

YORK COLLEGE

For the Year Ending June 14, 1899.

YORK, NEBRASKA.



College Building.

BOARD OF TRUSTEES.

AT LARGE.

Judge A. C. Montgomery, - - - - President.
Lieut. Gov. E. A. Gilbert, - - - - Rev. S. E. Lloyd,
Hon. A. B. Taylor, - - - - S. T. Mapps,
Hon. J. W. Purinton, - - - - Secretary.
N. A. Dean, - - - - Treasurer.

East Nebraska Conference.

Judge J. S. Kirkpatrick, - - - - Lincoln, Nebr.
G. F. Steeves, - - - - Panama, Nebr.
H. M. Alma, - - - - Greenwood, Nebr.

West Nebraska Conference.

Rev. William Thompson, - - - - Selma, Cali.
Rev. A. Boyd, - - - - Hastings, Nebr.
Rev. J. J. Smith, - - - - St. Paul, Nebr.

Elkhorn and Dakota Conference.

Rev. N. B. Moore, - - - - Howells, Nebr.
Rev. A. A. Garner, - - - - Ainsworth, Nebr.
Rev. F. Stinton, - - - - Dixon, Nebr.

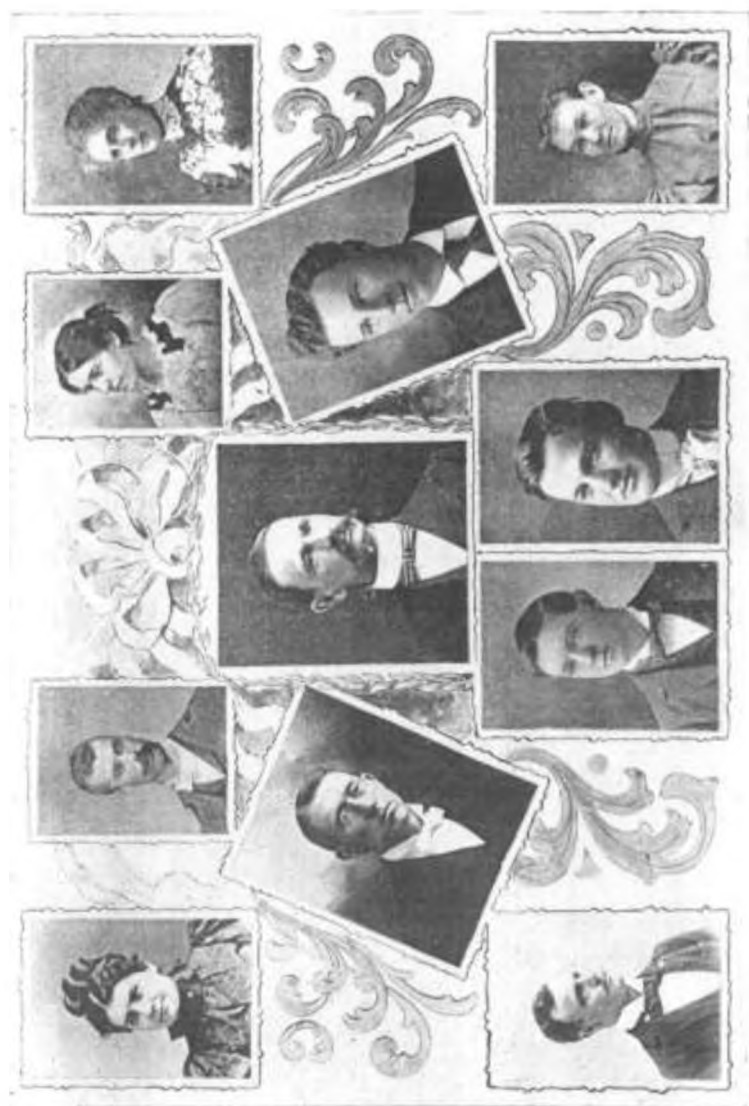
Colorado Conference.

Rev. E. J. Lamb, - - - - Estes Park, Colo.
Rev. W. H. McCormick, - - - - Berthoud, Colo.
Rev. A. Griffith, - - - - Loveland, Colo.

EXECUTIVE BOARD.

William E. Schell, - - - - Chairman.
John W. Purinton, - - - - Secretary.
A. C. Montgomery, - - - - N. A. Dean,
W. W. Hart, - - - - A. Seed.

W. E. Hoth, Janitor.



FACULTY.

WILLIAM E. SCHELL, A. M., President,
Professor of Philosophy.

J. E. MAXWELL, M. S., Vice President,
Professor of Natural Science.

W. S. JOSEPH, C. E.,
Professor of Mathematics.

SAREVA DOWELL, A. M.,
Professor of Greek and Latin.

*LOUISE R. MILLER, A. B.,
Professor of Modern Languages.

W. W. HART,
College Pastor and Instructor in Bible,

GEORGE M. JACOBS, M. Aces.,
Professor of Commerce and Shorthand.

W. W. PORTER, B. S.,
Professor of Elocution.

MRS. D. E. SEDGWICK,
Principal of Music Department.

L. A. PINE,
Teacher of Vocal Music.

MYRA GRAVES,
Principal of Art Department.

LECTURERS.

Rev. B. M. Long, D. D., Lecturer on Ethics.

Rev. R. T. Cross, A. M., Lecturer on Geology and Astronomy.

B. F. Farley, M. D., Lecturer on Physiology and Hygiene.

Hon. C. F. Gilbert, LL. B., Lecturer on Common Law.

Bishop J. S. Mills, D. D., Ph. D., Lecturer on Sociology.

*Resigned. Place will be tilled.

INTRODUCTION

YORK COLLEGE was founded in 1890. It has grown up in the belief that the best education is Christian. It looks to the needs of the whole man and seeks the development of the physical, mental and moral powers in due proportion. Good Christian character is accounted a matter of prime importance, and all diligence is employed to build up the same. No sectarian principles, however, are urged upon the student. The design is to afford all the opportunity of securing a liberal education under the most pleasant and healthful moral influences. Equal advantages are offered to both sexes.

Accelerated progress has marked the past two years. Financial conditions have greatly improved and the attendance has steadily increased. With good equipments, an able faculty, an unrivaled location, a high and unchallenged reputation, and a growing knowledge, among the people of Nebraska and adjoining states, of the splendid advantages offered, the future advancement of the Institution must be such as to justify the hopes of its founders.

York College is controlled by a corporate board composed of five trustees at large and representatives from four annual conferences of the United Brethren in Christ. It offers Classical, Philosophical, Scientific, Literary, Preparatory, Normal, Teachers', Commercial, Shorthand and Typewriting, Music, Art and Elocution Courses. By reading the following pages, you will learn that our courses of study are equal to the best, and the expenses exceedingly low.

STUDENTS.

Graduates of College.

Minnie M. Buswell, A. B.-----	'94	Charles F. Crabb, A. B. -----	'94
Letitia M. Nance, B. Lit. -----	'97	Harriet B. Montgomery, B. Lit. ----	'97
M. Alice Reese, A. B. -----	'97	Alexander W. Marshall, A. B. -----	'97
Vernie P. Medlar, A. B. -----	'98	Ola S. Medlar, A. B. -----	'98

Mrs. J. E. Maxwell, Senior, Normal.
Charles S. Long, Junior, Classical.

Sophomores.

Jennie A. Doty -----	Philosophical.
Walter B. Johns -----	Philosophical.
Grace L. Schell-----	Classical.
W. B. Cunningham -----	Scientific.

Freshmen

C. Bernard Spohr -----	Classical.
M. Grace Taylor -----	Philosophical.
Lillian D. James-----	Philosophical.
Irwin E. Caldwell -----	Literary.
Lena E. Schell -----	Classical.
Carl K. Struble -----	Scientific.
Nina Young -----	Scientific.

Preparatory.

Armstrong, Anna M.	Barnes, W. W.	Chapman, Mabyn M.
Blake, Ethel	Bevard, Elmer E.	Cline, Mattie L.
Burke, Carl E.	Belcher, H. E.	Davis, Katie M.
Burgess, William B.	Beebe, Lyman	Daily, Frank E.
Bell, Clark E.	Carr, Myrtie	Denison, J. C.
Brown, Hermione	Casselmann, Mabel	Driskill, Chas. W.
Brown, Lulu J.	Casebeer, Chas. S.	Dietrick, Paul S.
Diehl, Arlo L.	Kinnison, Mate	Ramey, Franc M.
Doran, Maggie	Kirkpatrick, John C.	Redding, Mayme A.

Evans, Minnie
Eaglehoff, Florence
Foster, Blanche
Folts, Emily
Folts, Chester
Frickey, Warren N.
Graham, Ella
Gaylord, Chas. P.
Gaylord, Joseph
Garton, Burchard M.
Gilbert, Orville
Gilbert, Frances L.
Goble, Lillian M.
Hall, Ira E.
Halbeisen, Fannie
Harlan, Edmund
Horning, Blanche
Hoth, W. E.
Hopkins, Marian
Hoyle, Eugene L.
Holmes, Etto
Hull, Warren W.
Hymas, Lillie V.
Irwin, W. A.
Ittner, Edna
Jacobs, G. M.
Jackson, Mortimer J.
Johnson, Maude
Johnson, Phoebe L.

Klone, Lillie
Kolling, Frieda L.
Labart, Iva J.
Landon, Frank G.
Landon, Lena A.
Lockey, Willard E.
Logsdon, Daisy A.
Long, Mrs. C. S.
Long, Josephine
Marks, Minnie
Montgomery, Mabel
Myers, H. Verne
Merkel, Arthur E.
Mc Vay, Ambrose, G.
Mc Vay, Fulton C.
Mayo, R. C.
Marquis, Ralph
Nobes, Jennie R.
Nugent, Thomas E.
Oberg, Nellie R.
Olmsted, Malia
Overstreet, Clifford C.
Peterson, Charles
Pine, Bertha S.
Porter, L. E.
Porter, Fannie
Post, Gertrude J.
Purington, C. W.
Ramey, Chas. E.
Ramey, Otto C.

Reid, Laura B.
Ramsdal, Mary E.
Ronne, L. P.
Ryan, Walter J.
Spohr, C. Bernard
Scott, Grace
Scott, Anna
Scott, Cora E.
Scott, Rose
Sedgwick, Phila
Sedgwick, Allan C.
Sandall, Chas. E.
Sandall, C. E. J.
Shidler, Geo. P.
Shambaugh, Jesse A.
Sturgeon, Florence M.
Strickler, Addie
Steeves, Chloe G.
Stouffer, Roy
Simmons, Robert A.
Simmons, Hallie E.
Spears, Geo. L.
Taylor, Guy
Taylor, Mabel G.
Test, Albert F.
Troutman, Agnes E.
Waldron, Leon
Williams, True E.
Williams, Mrs. W. C.

Commercial.

Allen, Geo. B.
Clark, Francis H.
Danley, Geo. M.
Eichelberger, Ottie

Elfers, Helmer O.
Ford, W. L.
Frazer, John
Hurlbut, Grace

Huff, Jacob E.
Hedblom, C. A.
Hedlund, A. E.
Hawley, Burton R.

Johns, Wilbur A,

McClain, Chas. L.

Ramsdal, Fred W.

Johnson, F. L.
Keslar, Fred W.
Keslar, Clarence A.
Landon, Frank G.
Landon, Lena
Lloyd, Herman R.
Lloyd, Milton H.
Lytle, Howard R.
Lynde, John E.

Brooks, Pearl
Brown, Jessie I.

Bamgrover, Jessie
Bagnell, Ruth
Bagnell, Nellie
Bell, Howard
Casselman, Mabel
Carpenter, Viola
Campbell, Maude
Cox, Grace
Cox, Blanche
Currie, Helen
Davis, Arthur U.
Davis, Katie M.
Dowell, Sareva
France, Eva
Graves, Nora
Hutchinson, Mabel
Hyder, Florence

Barnhart, Nellie
Burke, C. E.
Carpenter, Lulu
Denison, J. C.
Hoth, W. E.
Homing, Blanche

Mosgrove, W. Logan
Myers, Fred L.
Matson, Fred E.
Nelson, C. S.
Pyle, Chester A.
Quillen, Ashley C.
Read, Hugh L.
Rystrom, O. A.
Reed, S. S.

Shorthand.

Clark, Jennie M.
Hurlbut, Grace
Mecham, Lottie L.

Music.

Johnson, Lena
Joseph, Mrs. W. S.
Kinnison, Ella
Marshall, Mrs. B. F.
Montgomery, Harriet
Miller, Louise
Nisser, Gertrude
Nobes, Belle
Nugent, T. E.
Opitz, Ida
Overstreet, Susie
Overstreet, C. C.
Paris, Imogene
Pierce, Mabel
Pierce, Mark
Porter, Laura
Post, Pearl

Vocal Music.

Fink, F. F.
Frazer, John
Hart, W. W.
Hart, Mrs. W. W.
Nugent, T. E.
Pine, Bertha S.

Smith, Grace I.
Shaneyfelt, C.
Struble, A. R.
Scott, C. M.
Seed, W. W.
White, Willis G.
Watt, I. Wesley
Woodruff, Earl J.

White, Willis G.
Williams, Lizzie

Rader, Maude
Rader, Laura
Rice, Fannie
Reed, Mamie
Reed, Dora
Roberts, Blanche
Ritger, Theresa
Scott, Grace
Sedgwick, Phila
Steeves, Chloe
Stark, Nettie
Taylor, Nellie
Taylor, Grace
Tilden, Florence
Van Winkle, Winfred
Van Winkle, Evelyn

Hall, Ira E.
Herman, Lettie
Hedlund, A. E.
Hedblom, C. A.
Ramey, O. C.
Reed, S. S.

Irwin, W. A.
Johns, W. A.
Lloyd, M. H.
Me Vay, A. G.
Mosgrove, W. L.
Merkel, A. E.

Pine, Clark
Perry, Geo. D.
Porter, Fannie
Porter, L. E.
Porter, W. W.
Ramey, C. E.

Strockey, Milton
Spohr, C. B.
Sturgeon, Florence
Test, A. F.
Test, Luella

Elocution.

Barnes, W. W.
Bevard, E. E.
Beebe, Lyman
Blood, Alice
Buchanan, May
Carpenter, Pearl
Carpenter, Cecil
Casselmann, Mabel
Chapman, Maybn
Cline, Mattie
Dart, Julia
Driskill, C. W.
Dietrick, P. S.
Foster, Clara
Fountain, R. D.

Frazer, John A.
Graham, Ella
Hart, W. W.
Henderson, Marian
Hull, W. W.
Huffman, Florence
Hoth, W. E.
Jacobs, G. M.
Jerome, Stella
Kirkpatrick, J. C.
Landon, Lena
Landon, F. G.
Long, C. S.
Long, Nellie
Lloyd, M. H.
Merkel, A. E.

Mosgrove, W. L.
Nelson, C. S.
Porter, L. E.
Ramey, C. E.
Ramsdal, Mary
Shambaugh, J. A.
Smith, Gertie
Spears, G. L.
Struble, C. K.
Spohr, C. B.
Simmons, R. A.
Shidler, Bertha
Troutman, Flossie
Wood, Jennie
Wyckoff, W. W.

Art.

Blood, Chas.
Bresee, Libbie
Blake, Ethel
Burgess, W. B.
Carpenter, Pearl
Daily, Ethel
Daggy, Rolland
Davis, Katie
Fountain, Rowland

Fender, Maude
Graves, Nora
Johnson, Phoebe
Jerome, Stella
Jacobs, G. M.
Kingsley, Hellen
Lang, Edith
Landon, F. G.
Olson, Oscar

Paine, Harry
Reid, Laura
Schell, Grace
Smith, Mabel
Steinbach, Gertrude
Taylor, Nellie
Taylor, Addie
Wray, Willie
Wollard, Grace

Total enrollment, not duplicating names, 253.