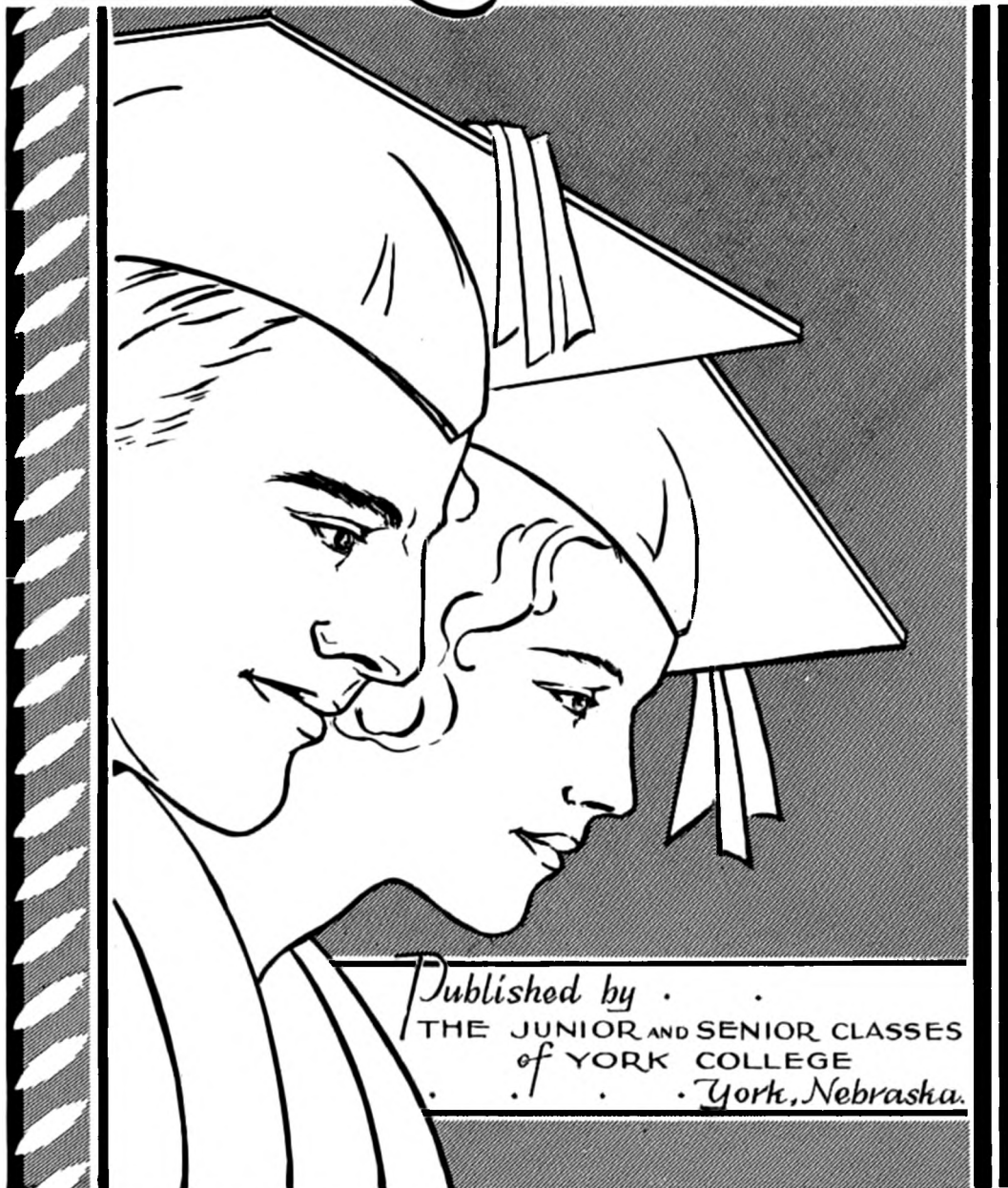


# MARATHON

Marathon.  
QUARTO YORK F 672 Y62 MAT 1934 183898  
C. 1



THE 1934  
MARATHON



Published by . . .  
THE JUNIOR AND SENIOR CLASSES  
of YORK COLLEGE  
. . . York, Nebraska.



# MARATHON BOARD

## EDITORIAL STAFF

Editor-in-Chief.....	<i>LeRoy Avers</i>
Associate Editor.....	<i>Henry Franz</i>
Literary Editor.....	<i>William Hice</i>
Feature Editor.....	<i>John Boren</i>
Art Editor.....	<i>Arthur Amadon</i>
Snapshot Editor.....	<i>Margaret Johnson</i>
Sports Editor.....	<i>Russel Lewis</i>
Staff Typist.....	<i>Edlth Lawson</i>
Faculty Adviser.....	<i>Miss Edith M. Callender</i>

## BUSINESS STAFF

Business Manager.....	<i>Evelyn Dixon</i>
Advertising Manager.....	<i>Raymond Wochner</i>
Assistant Advertising Manager.....	<i>Evangeline Steen</i>
Sales Manager.....	<i>Jack Graham</i>





# FOREWORD

TO ACCURATELY DEPICT  
THROUGH PICTURES AND THE  
PRINTED PAGE A MEMORABLE  
YEAR OF STUDENT LIFE AT  
YORK COLLEGE IS THE PUR-  
POSE OF THE 1934 MARATHON.





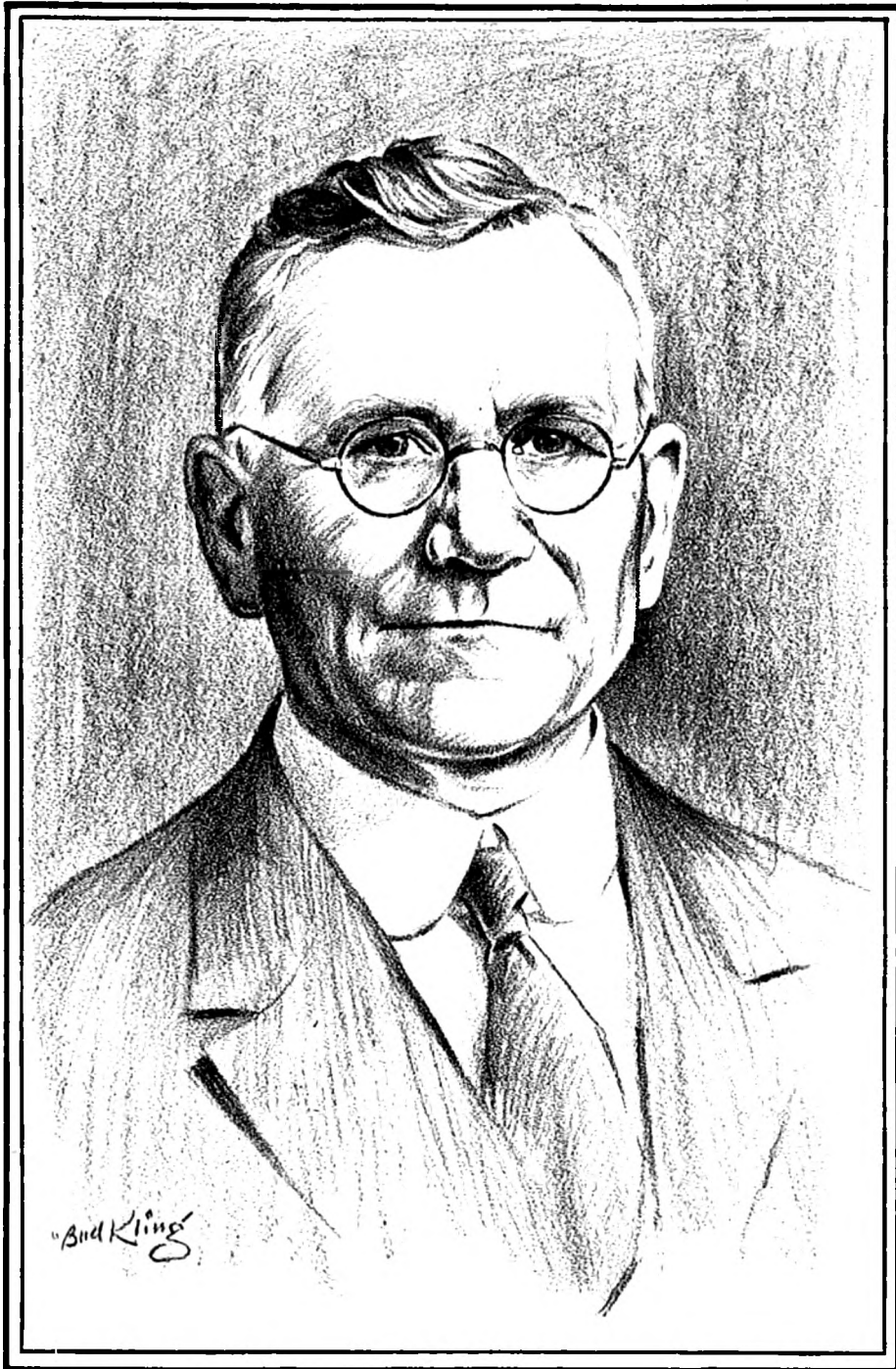
# DEDICATION

TO

CHARLES BISSET

WHO HAS ENDEARED HIMSELF TO HUNDREDS OF YORK COLLEGE STUDENTS BECAUSE OF HIS FRIENDLY COUNSEL, SOUND SCHOLARSHIP, EXEMPLARY CHARACTER, ETERNAL YOUTHFULNESS, AND UNFAILING DEVOTION TO YORK COLLEGE, WE RESPECTFULLY DEDICATE THE MARATHON OF NINETEEN HUNDRED AND THIRTY-FOUR.





**DR. CHARLES BISSET**



# IN MEMORIAM

E. A. BISHOP

Class of 1911

ETHEL DIXON HILL

Class of 1930



TRUSTEES

W. L. DUNCAN, D. D.

E. E. McAFERTY, D. D.





# TABLE *of* CONTENTS

- I. ADMINISTRATION
- II. CLASSES
- III. ACTIVITIES
- IV. FEATURES
- V. ATHLETICS





# THE THEME *of* THE MARATHON

## GOLDEN DAYS

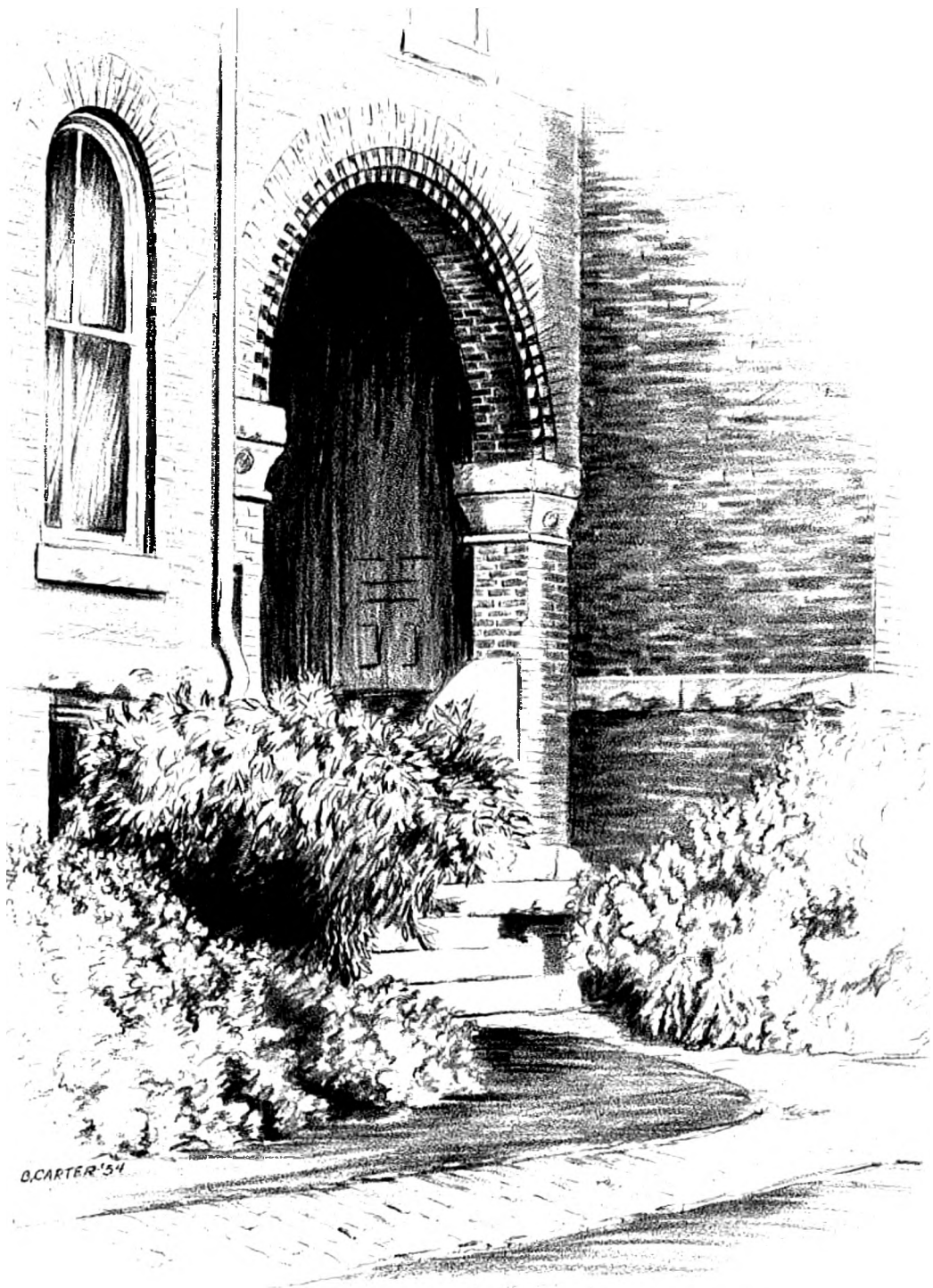
Golden days in the sunshine of our happy youth—  
Golden days full of innocence and full of truth!  
In our hearts we remember them all else above—  
Golden days, days of youth and love!

How we laughed with a gaiety that had no sting!  
Looking back through memory's haze!  
We will know life has nothing sweeter than its Springtime,  
Golden days, when we're young, golden days!

—Dorothy Donnelly.

(From Sigmund Romberg's light opera,  
'The Student Prince in Heidelberg')

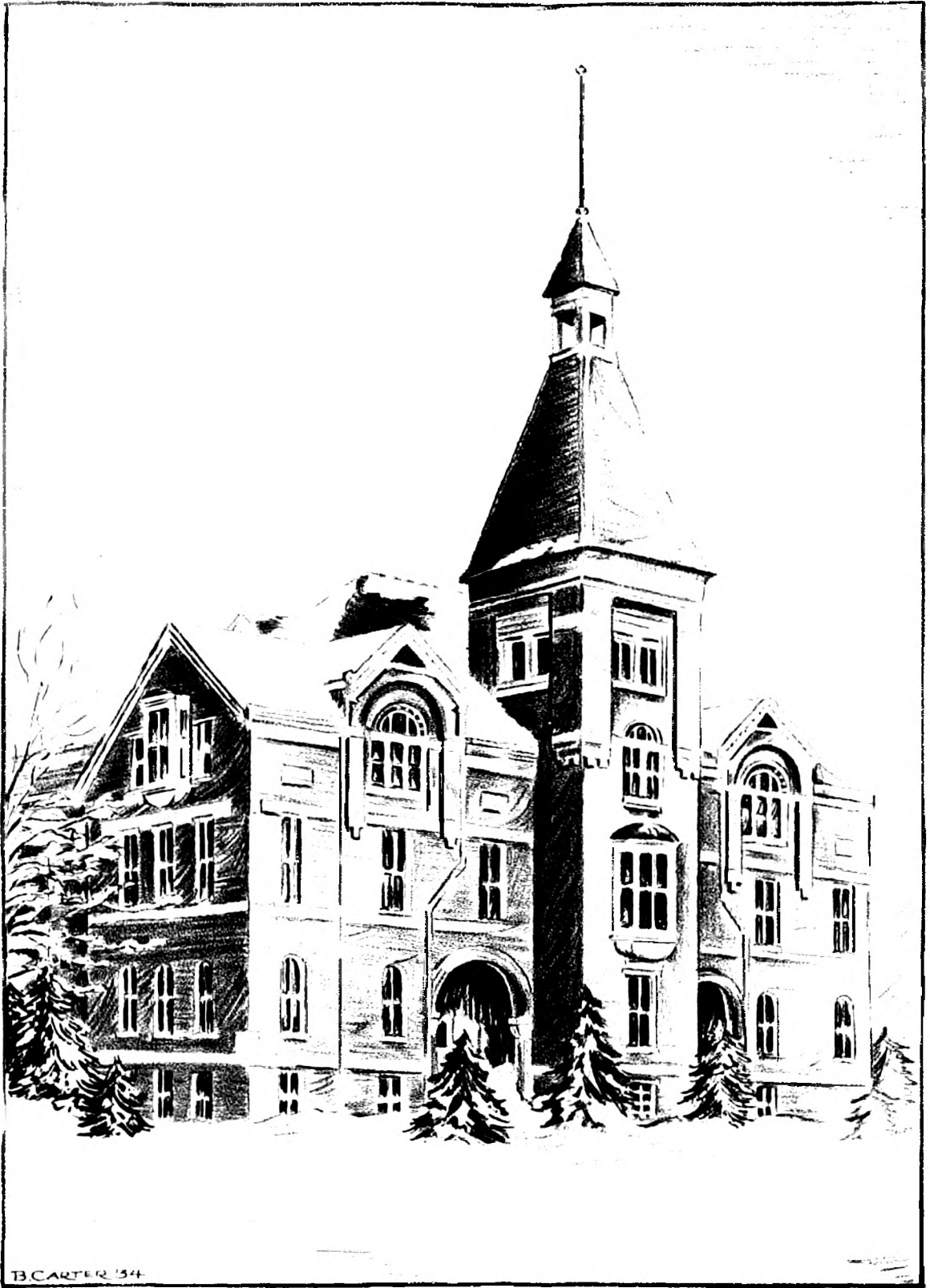




*Administration Building*

“Where’er I roam, whatever realms to see,  
My heart untravell’d fondly turns to thee.”

—*Goldsmith.*

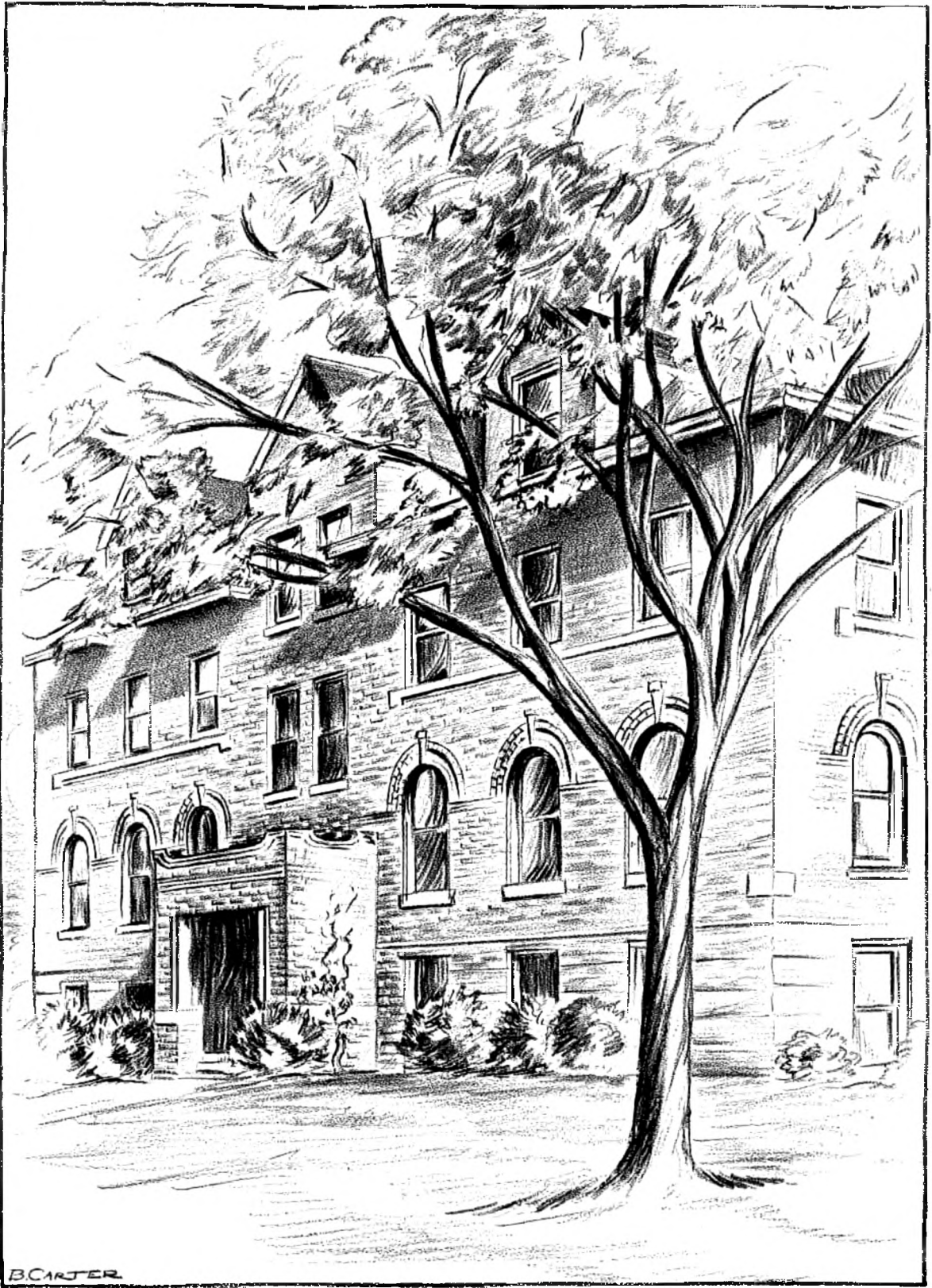


*Administration Building*

"Wisdom, slow product of laborious years,  
The only fruit that life's cold winter bears. "

—Lady Montagu.



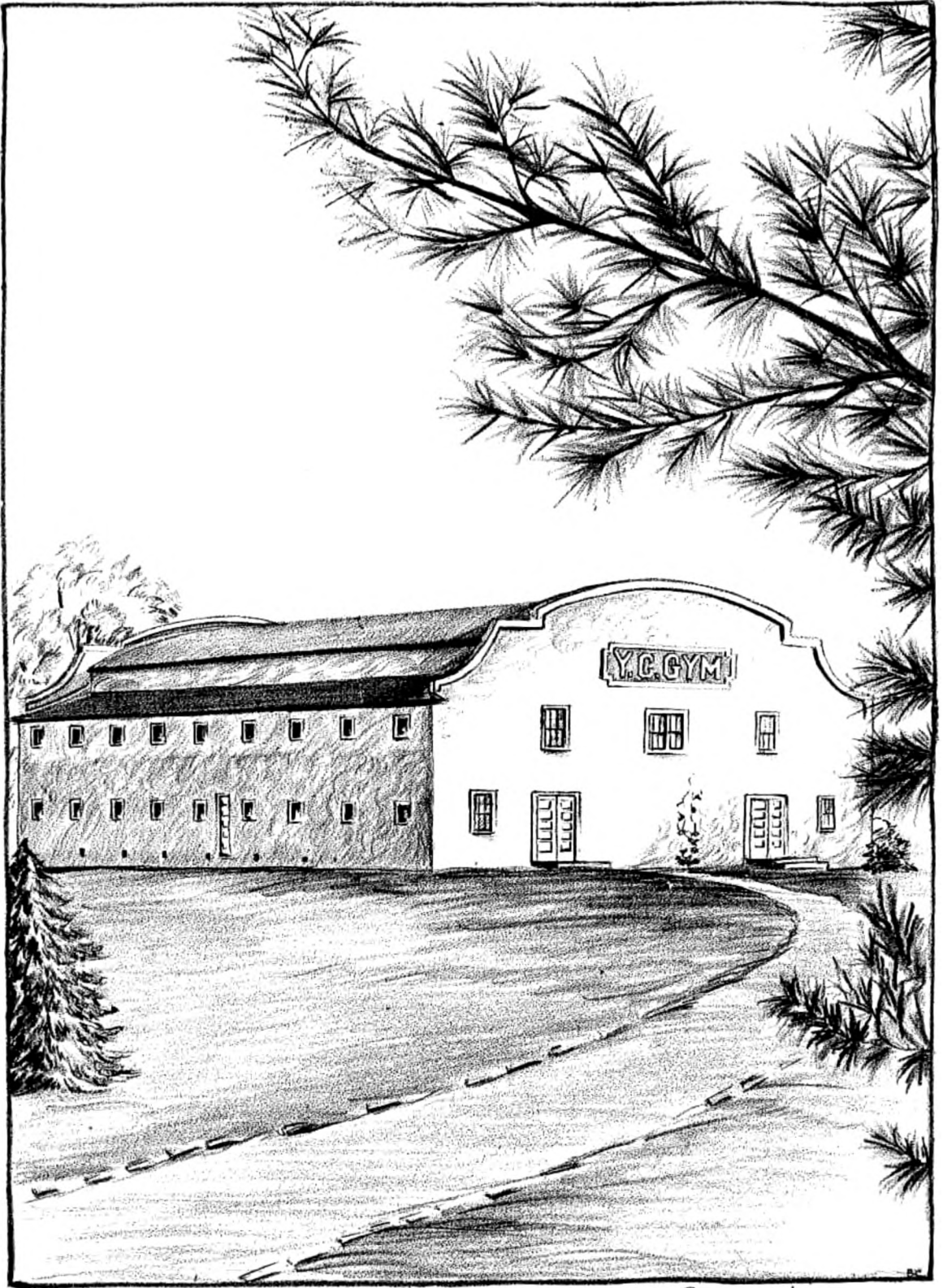


*Hulitt Conservatory*

"The music in my heart I bore,  
Long after it was heard no more."

—Wordsworth.

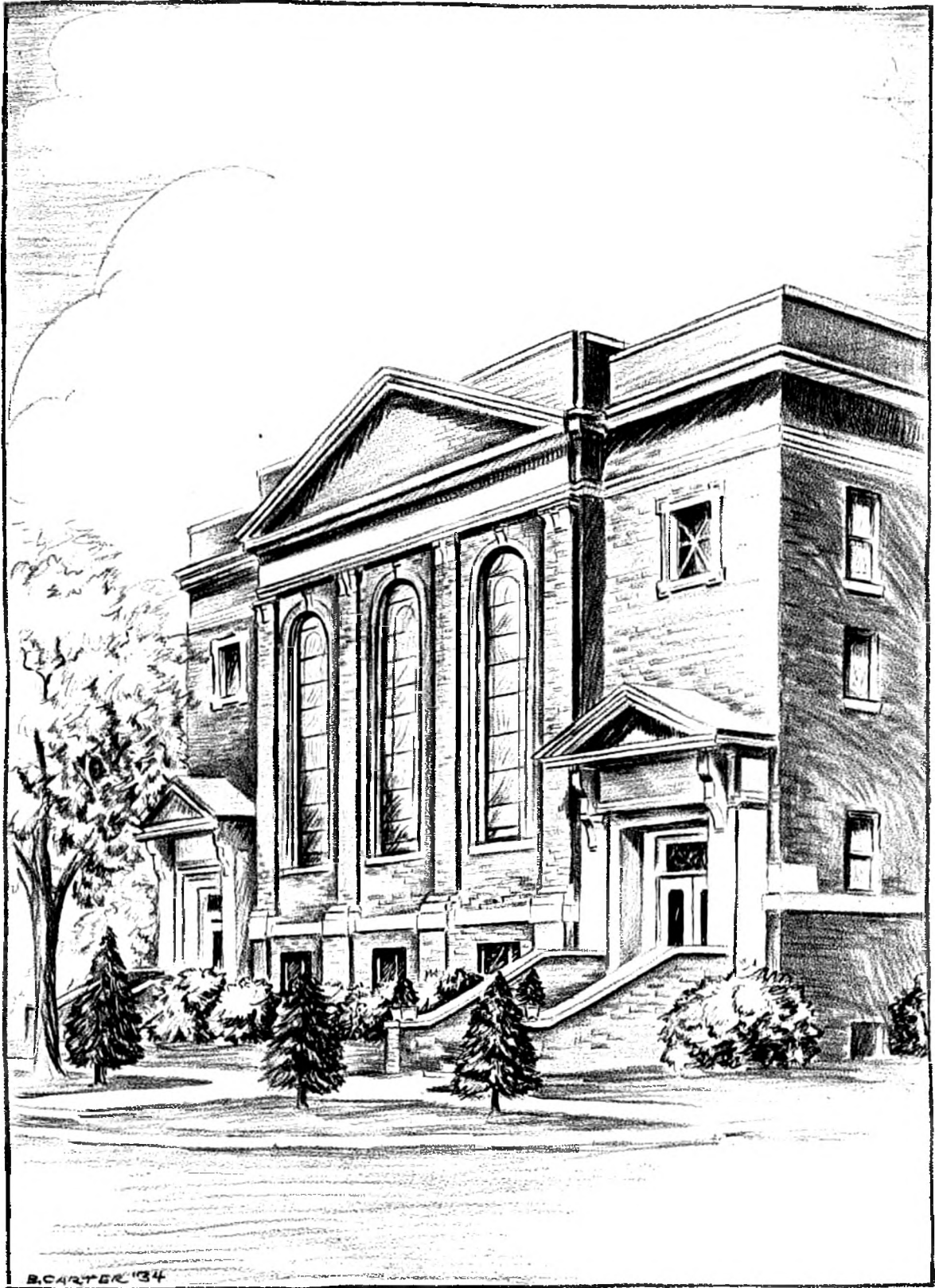




*Gymnasium*

"Let's meet and either do or die."

—Beaumont and Fletcher.



*United Brethren Church*

"What greater calamity can fall upon a nation than the loss of worship? "

—Emerson.



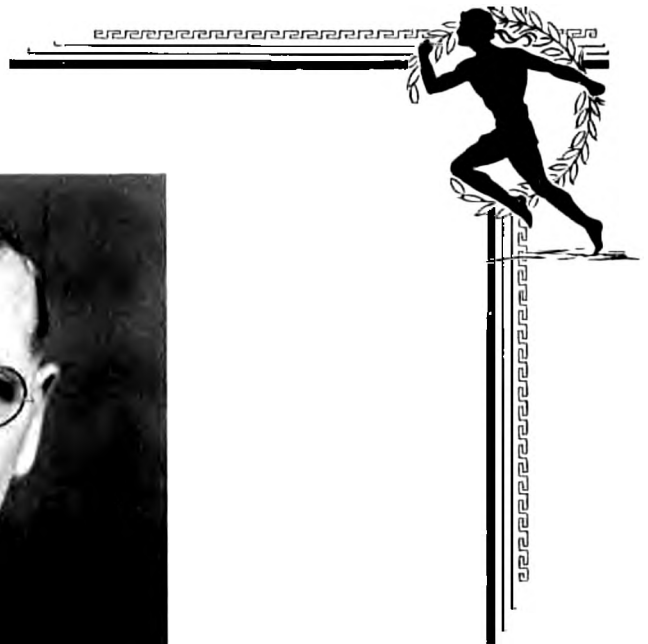
*Alumni Library*

“The great consulting room of a wise man is a library.”

—Dawson.

# ADMINISTRATION





PRESIDENT J. R. OVERMILLER

A. B., Kansas City University; B. D., Bonebrake Theological Seminary.

The closing of the present school year will mark the completion of five years of service as President of York College for a man who has endeared himself to the students because of his geniality, his friendliness, and his sympathetic understanding of their various problems. At some colleges and universities the president is considered a cold and aloof personage. Moreover, many times that consideration is correct. At York, such is not the situation. The students look upon the head of their college as one of them. They know him to be a man with a great heart. Small wonder, then, that he is affectionately referred to as "Prexy."

Though constantly under the weight of all the problems that have beset church colleges during the past years of economic stress, President Overmiller's unflinching fortitude and unflagging confidence have been an inspiration to students, faculty and townspeople. All have learned a great lesson from his indomitable spirit.

President Overmiller as an administrator has been equally successful. The college is indeed fortunate in having as its head a man who could steer such a safe course through such stormy and turbulent waters. His sound and sane judgment, coupled with liberal and progressive thought, has had not a little to do with the educational progress made by York College while reversals have been experienced in other fields. If esteem of one's fellowmen could be converted into money, President Overmiller would be a wealthy man.



# FACULTY



WARREN R. BALLER

Vice President and Director of Student Guidance  
Philosophy and Psychology  
B. A., York College; M. A., University of Nebraska.  
Graduate Study: University of Colorado, Columbia University, University of Minnesota, University of Nebraska.  
Member: Psi Chi, Pi Gamma Mu.



EARL I. DOTY

Director of Curricular Program  
History and Political Science  
B. A., Leander Clark College; B. D., Bonebrake Theological Seminary; M. A., University of Chicago.  
Graduate Study: University of Kansas, University of Chicago.  
Member: Pi Gamma Mu.



RAY HILL

Director of Student Activities  
Biology  
B. S., Washburn College; M. A., University of Colorado.  
Graduate Study: University of Colorado.  
Member: American Association for the Advancement of Science, Phi Pi Phi.



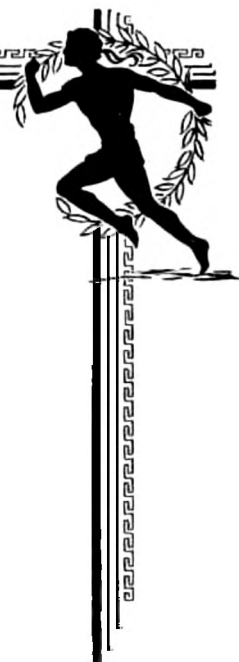
CHARLES BISSET

Director of Intercollegiate Relations  
Religious Education and Social Science  
Ph. B., San Joaquin Valley College; B. A., Campbell College; B. D., Bonebrake Theological Seminary; M. A., University of Kansas; D. D., York College.  
Graduate Study: University of Nebraska, University of Chicago.





## FACULTY



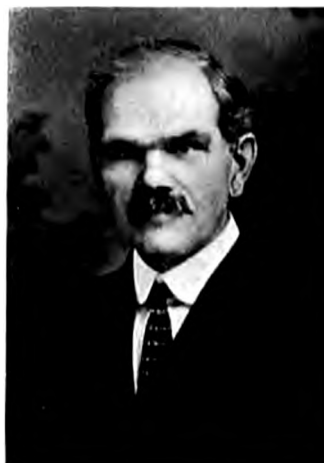
EDITH M. CALLENDER

English

B. A., York College; M. A., University of Nebraska.

Graduate Study; University of Chicago, University of Nebraska.

Member; York Scholars, National Council of Teachers of English.



HOWARD C. FEEMSTER

Mathematics

B. A., Drury College; M. A., University of Nebraska.

Graduate Study; University of Nebraska.

Member; Mathematical Association of America.



ALMA TRESS LUNDMAN

Expression and English

B. A., Huron College; Dramatic Diploma, MacPhail School of Expression; Public Reader and Teacher Diploma, Curry School of Expression.

Graduate Study; University of Wisconsin.

Member; Alpha Sigma Phi, Pi Gamma Pi, Epsilon Sigma.



J. CLIFFORD MORGAN

Classical Languages

B. A., Campbell College; M. A., University of Kansas.

Graduate Study; University of Nebraska, University of Chicago.

Member; Classical Association of the Middle West and South, Alpha Sigma Phi.



## FACULTY



MARY ALICE SLEE  
Education

B. A., Iowa State Teachers College; M. S.,  
Cornell University.

Graduate Study: University of Iowa, Colo-  
rado State Teachers College.

Member: Pi Lambda Theta.



CHRIS P. KEIM  
Physical Science

B. A., Nebraska Wesleyan University; M. S.,  
University of Nebraska.

Graduate Study: University of Pittsburgh,  
University of Nebraska.



ZELDA M. WAKELIN  
Romance Languages

B. A., Nebraska Wesleyan University; M. A.,  
University of Nebraska.

Graduate Study: University of Nebraska.



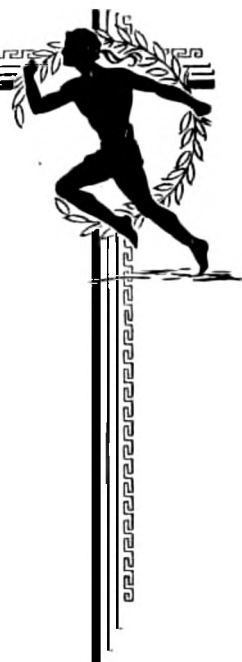
R. E. TOWNSEND  
Business College

M. Accts., Campbell College; Teacher's  
Diploma, Palmer School of Penmanship;  
Teacher's Certificate, Gregg School; Higher  
Acct. Course Diploma, LaSalle Extension  
University.

Graduate Study: University of Kansas.



## FACULTY



CHARLES H. AMADON  
Dean of Hulitt Conservatory of Music  
Voice

Graduate of the New England Conservatory  
of Music.

Graduate Study: Whitney International  
School of Music, L. A. Torrens, William  
Shakespeare, Jr., Herbert Witherspoon.

Member: Nebraska Academy of Voice  
Teachers.



EDA L. RANKIN  
Piano and Organ

B. Mus., University of Nebraska.

Graduate Study: Rudolph Ganz, Percy  
Grainger, Josef Lhevin.

Member: Sigma Alpha Iota, Pi Kappa  
Lambda.



GLADYS G. PEARSON  
Piano

B. Mus., University of Nebraska.

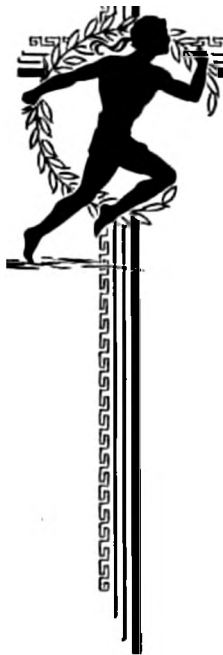
Graduate Study: Rudolph Ganz; Froken  
Stockmarr, Copenhagen, Denmark; Percy  
Grainger.

Member: Sigma Alpha Iota, National Music  
Teachers' Association.



MURIEL THOMAS CLARKE  
Violin and Public School Music

B. Mus., Tarkio College; B. A., Doane Col-  
lege.



## FACULTY



GUY O. ORDWAY  
Athletic Coach—Physical Education  
B. A., Kansas State Teachers College, Hays.



ANNA J. THOMPSON  
Registrar and Treasurer  
York College.



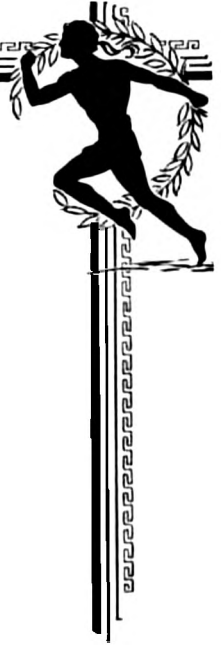
MRS. J. A. GIAUQUE  
Art  
B. F. A., Illinois Wesleyan University.  
Graduate Study: Chicago Art Institute,  
Campana Summer Institute.



EDITH M. CONE  
Librarian  
B. S., University of Nebraska.  
Graduate Study: University of Nebraska.  
Member: Omicron Nu.



## FACULTY



EMMA FYE  
Dean of Women

York College.



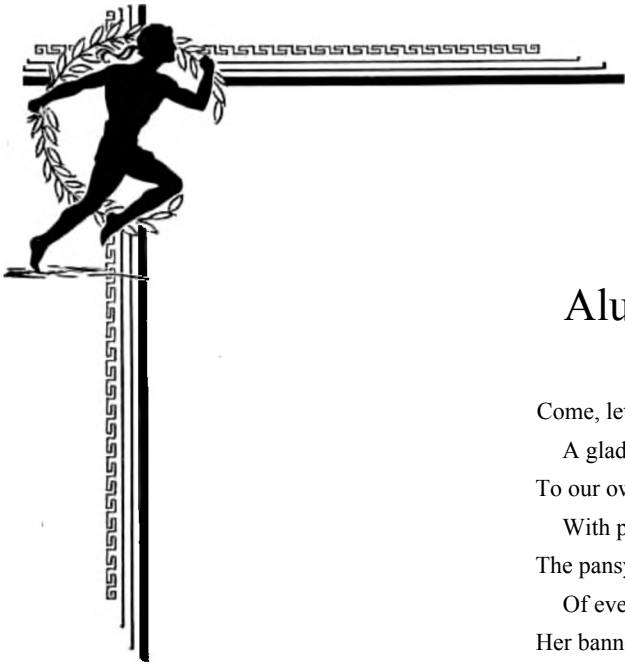
PAUL B. PORTER  
College Pastor  
B. A., York College; B. D., Bonebrake Theo-  
logical Seminary.

## Tribute to the Faculty

Books without personalities to make them live are valueless. As the year draws near its conclusion, each collegian cannot help appreciating the rich personalities of the professors who have made even the dullest textbooks sparkling and stimulating. To be able to develop the mind and the body to their highest levels may be the objective of some instructors, but the faculty of York College have done more than that. They have also imparted moral and spiritual lessons along with the physical and mental lessons.

Students who are about to leave the halls of York College—some for months, some for years, and some forever -realize that they have acquired not only knowledge but something even better, —a mastery of the fundamentals of the profession of knowing how to live. Association with these noble men and women has established a beautiful relationship never to be forgotten. To have been sharers of their knowledge, ideals, and aspirations has been an experience too sacred to profane by the idle use of mere words.

To the men and women who have made us better because of our contacts with them, we say, "All hail!"



## Alumni Song

Come, let us sing together  
A glad triumphant song  
To our own Alma Mater  
With praises loud and long;  
The pansy is her emblem  
Of every tint and hue  
Her banner floating o'er us  
Is the Royal White and Blue.

### Chorus

The pansy is her emblem  
Of every tint and hue  
Her banner floating o'er us  
Is the Royal White and Blue.

Her halls so high and lofty  
Give glory to her name;  
The fight for greater wisdom  
Adds luster to her fame;  
When you grow sad and weary  
Of life and all else too;  
Just think of old York College  
And the Royal White and Blue.

When we have left to others  
The toils of college life  
And out upon life's billows  
Have met with many a strife;  
And when with cares unnumbered,  
Our eyes are wet with dew,  
We'll lift our voice in triumph  
For the Royal White and Blue.

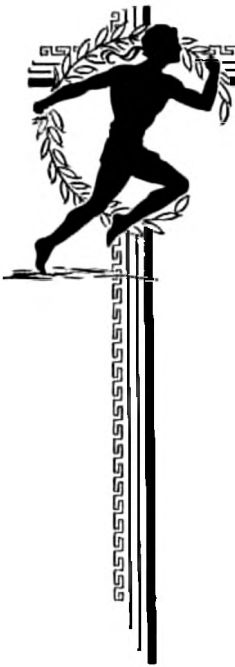
C. W. Gwinn, '05.

# CLASSES





**CLASS *of* 1933**



**MARVIN L. HERSEY, B. A.**

**York**

Football; Basketball; Baseball; Track; Tennis;  
"Y" Club, President; Revelers; Glee Club; Zeta.

*Major—History*



**BESSIE JAMES, B. A. Gladbrook, Iowa**

Histrionic Club; PALS; Y. W. C. A., Cabinet;  
W. A. A., President; Sandburr Staff, Editor;  
May Queen.

*Major—English*



**KENNETH JENKINS, B. A.**

**York**

Revelers; Glee Club; Class President; PALS.

*Major—Public School Music*



**MAURICE BROOKHART, B. S. Nelson**

Football; Basketball; Track; "Y" Club; Glee  
Club; Orchestra; Histrionic Club; Y. M. C. A.,  
Cabinet; Student Council, President; PALS.

*Major—Physical Science*



**WILBUR GARD, B. A.**

**York**

Football; Basketball; Track; "Y" Club; Glee  
Club; PALS; Histrionic Club; Student Council;  
Y. M. C. A.

*Major—History*

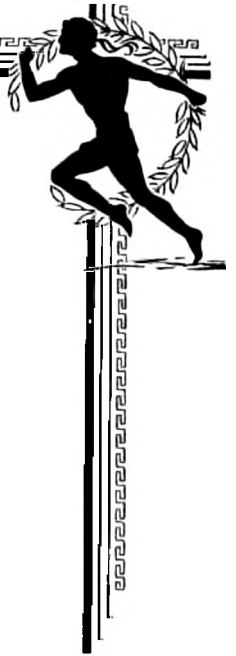


**NATHAN GUTSCHOW, B. S.**

**York**

Y. M. C. A., Cabinet; Histrionic Club; PALS.

*Major—Physical Science*



**THERON MAXSON, B. A.**

**Walla Walla, Wash.**

Y. M. C. A., President; PALS; Histrionic Club; Life Work Recruits; Forensic Club; Representative Man.

*Major—History*



**ELEANOR ZIKE MAXSON, B. A.**

**Walla, Walla, Wash.**

Y. W. C. A., Cabinet; Histrionic Club; PALS; Life Work Recruits, President; W. A. A.; Representative Woman.

*Major—English*



**DORIS STIYERSON, B. A.**

**Shelby**

Glee Club; Zeta; Y. W. C. A., President.

*Major—English*

**MRS. IRENE WHITE, B. S.**

**York**

Y. W. C. A.

*Major—Biology*



**HAROLD WILCOX, B. S.**

**Elgin**

PALS; Y. M. C. A.

*Major—Biology*



**JULIA WILSON, B. A.**

**Pueblo, Colo.**

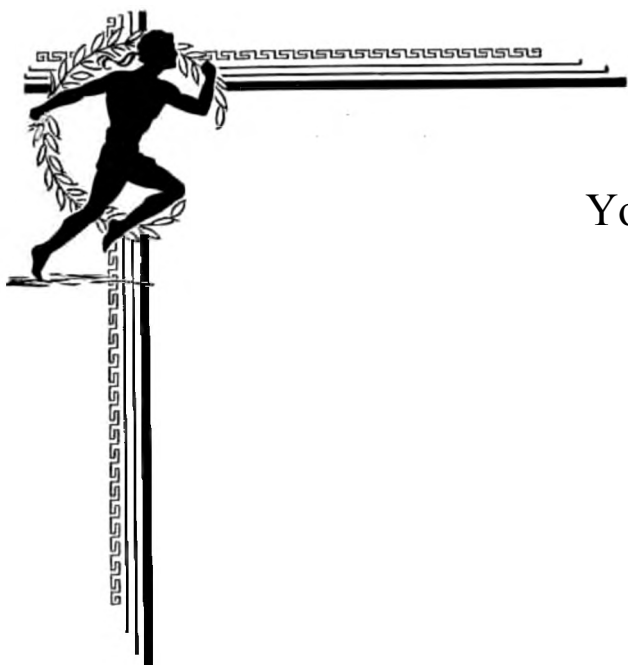
Glee Club; Y. W. C. A., Cabinet; PALS.

*Major—Romance Languages*



Other Members of the Class of '33; Rebekah Spore, York; Whelda J. Wrye, Warrior's Mark, Pennsylvania; Ellen Mann, York.





## York Scholars



All graduates of York College who have attended the institution at least two years, and whose grades for the time enrolled average from 90 per cent to 92 per cent inclusive, are awarded the honor MAGNA CUM LAUDE. Those whose average is 93 per cent or above are awarded the honor SUMMA CUM LAUDE. The members of these two groups are designated as York Scholars and are entitled to wear a scholarship key bearing the proper wording.

### SUMMA CUM LAUDE

W. B. Johns, '01; Mrs. Grace Schell Johns, '01; Mrs. Lena Schell Caldwell, '02; Rev. R. C. Shupe, '05; Mrs. Bessie Casebeer Peterson, '08; Robert Getty, '11; Effie Cline, '11; Dr. Lydia Schaum, '13; Mrs. Eva Stuckey Buswell, '13; Mrs. Emma Groelz Feemster, '13; Ruth Callender, '15; Edith Callender, '15; Rev. A. P. Vannice, '15; Mary Rankin, '16; Ralph LeFevre, '25; Schuyler Phillips, '29; Mrs. Onita Stone Phillips, '30; Minnie Gebbers, '31; Wilhelmina Feemster, '31.

### MAGNA CUM LAUDE

Rev. I. E. Caldwell, '02; C. W. Gwinn, '05; R. E. Caldwell, '06; H. L. Stilson, '06; L. E. Mohler, '07; Rev. C. I. Mohler, '07; W. H. Morton, '09; W. C. Noll, '11; Jane Muir, '15; Mrs. Nina Francis Porter, '15; Jessie Stewart, '16; G. W. Saunders, '17; Mrs. Nina Caldwell Graham, '18; Mrs. Opal Harritt St. John, '18; Mrs. Pauline Bradwell Glock, '18; Mrs. Hattie Mapps Rankin, '19; Blanche Harritt, '20; Merle Harner, '20; Mrs. Ellen Kaliff Coffey, '20; Mrs. Alice Kaliff Stowe, '20; Lenore John, '21; Florine Townsend, '22; Myrvan Cannon, '23; Mrs. Fae Culbertson Fluevog, '23; Harold Prentice, '24; Levi Loreman, '25; Rev. Max Van Wagenen, '25; Myron Holm, '25; Mrs. Pearl Harritt Noll, '27; Ethel Spore, '27; Theron Gard, '27; Mrs. Marian Boughner Clark, '27; Mabel Shelquist, '28; Theodore Thompson, '28; Etta Mason, '28; Elanor Allen, '28; Elizabeth James, '28; Mrs. Evelyn Lorence Caldwell, '28; Mrs. Lorraine Thompson Sterner, '28; Thornton Miller, '29; Harlon Moore, '29; Edna Coffey, '29; Mrs. Ardith Kull Fast, '30; Raymond Ruppel, '31; Erma Thomas, '31; Mrs. Neva Brookhart Moore, '31; Marie Anderson, '31; Mrs. Violette Taylor Calkins, '31; Jean Haner, '32; Jeanette Bisset, '32; Maybelle Taylor, '32; Mrs. Irene Winfield White, '33.



**SENIORS**



**VICENTE COLON Ponce, Puerto Rico**

*"Contentment is a pearl of great price."*

Y. M. C. A.; PALS; Orchestra; Band; Baseball; Troubadours.

*Major—Romance Languages*



**WILLIAM HICE York**

*"Tho' modest, on his unembarrass'd brow  
Nature had written—Gentleman."*

Y. M. C. A., Cabinet; Zeta President; Histrionic Club; Alpha Sigma Phi President; Student Council; Debate; Revelers; Troubadours; Voice Recital; Sandburr Staff; Marathon Board.

*Majors—English, History, and French*



**EVELYN DIXON Fairmont**

*"She that was ever fair, and never proud  
Had tongue at will, and yet was never loud."*

Y. W. C. A. Cabinet; PALS; Histrionic Club President; Student Council; Sandburr Staff; Marathon Board, Business Manager; Class President; Alpha Sigma Phi; Debate; W. A. A.

*Major—Chemistry*



**BERNABE HERRERA Alcalde, New Mexico**

*"None named thee but to praise."*

Y. M. C. A.; PALS; Life Work Recruits President; Histrionic Club; "Y" Club; Track.

*Majors—Romance Languages and Philosophy*



**ROGER EHLERS Benedict, Ict**

*"The hand that follows intellect can  
achieve."*

Y. M. C. A.; Zeta; Student Council; Histrionic Club; Baseball; Panther Club.

*Majors—Mathematics and History*



**MARIAN HILL Dennis, Kansas**

*"The moods of love are like the wind;  
And none knows whence or why they rise."*

One Year—Parsons (Kansas) Junior College. Y. W. C. A. President; PALS; Life Work Recruits; Student Council; Panther Club; Expression Recital; Alpha Sigma Phi; Histrionic Club; Piano Recital; Orchestra; W. A. A.

*Major—Music*



**HENRY FRANZ Henderson**

*"With mirth and laughter let old wrinkles  
come."*

Y. M. C. A.; PALS; Histrionic Club; Student Council; Sandburr Staff; Marathon Board; Class President; Glee Club; Serenaders; "Y" Club President; Track; Football; Basketball; Panther Club.

*Major—Chemistry*



**TENNIS W. HOFFMAN Yuma, Colorado**

*"Toil on courageously  
And thou shalt find thy dream to be."*

Y. M. C. A. Cabinet; Zeta; "Y" Club; Student Council; Class President; Sandburr Staff, Business Manager; Football.

*Major—Biology*





**MARGARET JOHNSON** York

*"Life is a jest, and all things show it.  
I thought so once, and now I know it."*

Class President; Panther Club; Y. W. C. A.;  
Marathon Board.

Major—History



**EDITH LAWSON** Ames, Iowa

*"To those who know thee not, no words can  
paint,  
And those who know thee, know all words  
are faint."*

Y. W. C. A.; Zeta; Student Council; Glee Club;  
Sandburr Staff, Editor; Marathon Board;  
W. A. A.

Major—English



**ROBERT E. MOLINE** York

*"To be strong is to be happy."*  
"Y" Club; Football; Basketball; Baseball.

Majors—Mathematics and Chemistry



**EVELYN MCKAIN** Pickrell

*"Constancy is the foundation of the virtues."*

Y. W. C. A.; PALS; Glee Club; Serenaders;  
Sandburr Staff; Voice Recital; Conservatory Ac-  
companist; Orchestra; Student Council.

Majors—Public School Music and Education

**MARION SHAMBAUGH** Bradshaw

*"Infinite riches in a little room."*

Y. W. C. A.; PALS, President; Sandburr Staff;  
Marathon Board; Histrionic Club.

Major—History



**FLOYD C. MERCHANT** Bradshaw

*"An honest man's the noblest work of God."*

Y. M. C. A.; PALS, President; Class President;  
Panther Club President; Glee Club; Serenaders;  
Histrionic Club; Football; "Y" Club.

Major—Mathematics



**RUSSEL LEWIS** Aurora

*"One's outlook is a part of his virtue."*

Y. M. C. A., President; PALS, President; Student  
Council; Alpha Sigma Phi; Debate; Glee Club;  
Sandburr Staff; Marathon Board; "Y" Club;  
Football.

Major—Biology



**HELENE PRICE** York

*"She excels  
All women in the magic of her locks."*

Y. W. C. A.; Sandburr Staff.

Major—Romance Language





ALMA WALKER Agra, Kansas  
*"Those dark eyes—so dark and so deep! "*  
One Year—Kansas City University Y. W. C. A.;  
PALS; W. A. A.; Student Council.  
Major—Music



MRS. EVANGELINE STEEN Concordia, Kansas  
*"Ambition has no rest. "*  
One Year—College of Emporia. Two Years—  
Kansas City University. Y. W. C. A., Cabinet;  
Zeta; Marathon Board.  
Major—English



CLYDE WELLS Woodward, Oklahoma  
*"A still and quiet conscience. "*  
One Year—Kansas City University. One Year  
—Oklahoma State Teachers College. Y. M. C.  
A.; Zeta.  
Major—History



MELVIN P. TACK Gaylord, Kansas  
*"Who trusts himself to woman, or to waves.  
Should never hazard what he fears to lose. "*  
Two Years—Kansas Wesleyan University. Three  
semesters—Kansas State College. Y. M. C. A.;  
PALS; Glee Club; Revelers; Football; Band; "Y"  
Club.  
Major—Mathematics



RODNEY K. WHITEMORE Polk  
*"He has a good reason for all he docs—  
and doesn't. "*  
Alpha Sigma Phi; Panther Club; Serenaders;  
Histrionic Club; Orchestra; Debate; PALS; Y.  
M. C. A. Cabinet.  
Major—Education



MELVIN A. THOMPSON York  
*"Thy modesty's a candle to thy merit. "*  
Sandburr Staff, Editor; Y. M. C. A.; Student  
Council; PALS; Track, Captain; Baseball; "Y"  
Club.  
Major—History



RAYMOND WOCHNER York  
*"Same old story, same old song,  
Same old girl all year long. "*  
Y. M. C. A., President; PALS, President; Debate;  
Histrionic Club; Sandburr Staff, Business Man-  
ager; Marathon Board; Student Council; Student  
Court Judge; Alpha Sigma Phi; Glee Club;  
Serenaders.  
Majors—Chemistry and Mathematics



MILDRED THOMPSON York  
*"A simple maiden in her flower is  
worth a hundred coats of arms. "*  
Y. W. C. A., Cabinet; Zeta; Histrionic Club;  
Panther Club; Sandburr Staff.  
Major—Latin





**JUNIORS**



**CARL H. BURHOOP**

Waco

"A merry heart maketh a cheerful countenance."  
Zeta; Glee Club; Orchestra; Histrionic Club;  
Band.

Major—Music



**ARTHUR AMADON**

York

"Now shall be my song,  
It shall be witty and it shan't be long."

PALS; Student Council; Revelers; Marathon.  
Board; Football; Glee Club; "Y" Club; Panther  
Club; Orchestra.

Major—Commercial Art



**VERNIE BUTTERMORE**

Woodston, Kansas

"A little nonsense now and then  
Is relished by the best of men."

Y. M. C. A.; Zeta, President; Life Work Re-  
cruits; Panther Club; Histrionic Club.

Major—History



**LE ROY AYERS**

York

"He does much and does it well."

Two Years—University of Chicago. Marathon  
Board, Editor; Football.

Major—Biology



**DAVID B. ENDER**

York

"I dare do all that may become a man.  
Who dares do more is none."

Y. M. C. A.; PALS; Football; Baseball; "Y"  
Club.

Major—Chemistry



**JOHN BOREN**

Pawnee City

"A man need not care for more knowledge  
than to know himself."

Y. M. C. A., Cabinet; Marathon Board; Glee  
Club; Revelers; Sandburr Staff, Business Man-  
ager; Zeta; Histrionic Club.

Major—Philosophy



**LILA ELAM**

Elba

"Black eyes, with a wondrous, witching charm"  
"To bring us good or work us harm."

Y. W. C. A.; Panther Club; Glee Club; Or-  
chestra; W. A. A.

Major—Education



**HOWARD CALVIN FEEMSTER, JR.**

York

"O most delicate fiend!  
Who is't can read a woman?"

Y. M. C. A.; PALS; "Y" Club; Tennis, Tennis  
Champion; Football; Sandburr Staff.

Major—Mathematics



**VERYL BURCH**

Merna

"Learning by study must be won;  
'Twas ne'er entail'd from son to son."

Y. W. C. A., Cabinet; Zeta; W. A. A.

Major—English





**NEVA FELLMAN Pipestone, Minnesota**

*"Sincere, thoughtful and refined,  
Always modest, true and kind."*

Y. W. C. A., Cabinet; Zeta; Life Work Re-  
cruits; Student Council; W. A. A.

*Major—English*

**MRS. FRANCES KIMBALL**

**Smith Center, Kansas**

*"They are never alone who are  
accompanied by noble thoughts."*

Y. W. C. A., Cabinet; Zeta, President; Life  
Work Recruits; Student Council; Alpha Sigma  
Phi; Debate; Sandburr Staff; Histrionic Club.

*Major—Philosophy*



**VIRGIL FOOSHEE Kremlin, Oklahoma**

*"He stands erect—  
He steps right onward, martial in his air."*

Two Years—Kansas City University. Y. M. C.  
A.; "Y" Club.

*Major—Physical Science.*

**ROBERTO LARRACUENTA**

**Mayaguez, Puerto Rico**

*"So much one man can do,  
That does both act and know."*

Two Years—Defiance College. Y. M. C. A.;  
Zeta.

*Major—Education*



**JACK GRAHAM**

**York**

*"Wit is the tool by which all things are  
wrought."*

Y. M. C. A., Cabinet; Zeta; Class President;  
Student Council; Alpha Sigma Phi; Debate;  
Sandburr Staff, Business Manager; Marathon  
Board; Band; Football; Baseball; Track; Basket-  
ball; "Y" Club; Football Representative.

*Major—English*



**CHARLES LENIHAN**

**York**

*"A willing way and a roguish smile  
Will surely get him many a mile."*

Y. M. C. A.

*Major—Chemistry*

**ROBERT GRAHAM**

**York**

*"Sentimentally, I am disposed to harmony,  
But organically, I am incapable of a tune."*

One Year—University of Nebraska. Y. M. C.  
A., Cabinet; Zeta, President; Class President;  
Orchestra; Football; "Y" Club.

*Major—Mathematics*



**DEAN KIMBALL Smith Center, Kansas**

*"Virtue is bold and goodness never fearful."*

Y. M. C. A., Cabinet; PALS; Life Work Re-  
cruits; Alpha Sigma Phi; Debate; Glee Club;  
Band; Orchestra.

*Majors—Philosophy and Creek.*

**MILTON MAURER**

**York**

*"His words are bonds, his oaths are oracles."*

Y. M. C. A., Cabinet; Histrionic Club, President;  
Class President; Football, Captain-elect; "Y"  
Club.

*Majors—History and Physical Science*







**WALTER SPEECE**

**York**

"He doth, indeed, show some sparks  
that are like wit."

Y. M. C. A.; Zeta; Life Work Recruits; Football; Basketball; "Y" Club.

Major—Mathematics



**LYNDLE MOORE**

**Aurora**

"Power, in its quality and degree, is  
the measure of manhood."

Y. M. C. A.; PALS; Class President; Student Council; Glee Club; Histrionic Club; Band; Football; Track; "Y" Club.

Major—Social Science

**RUSSELL SMITH Van Nuys, California**

"I am sure my love's more ponderous  
than my tongue."

Y. M. C. A.; Cabinet; Glee Club; PALS, Treasurer.

Majors—Zoology and Chemistry



**CARROLL MYERS**

**Garwin, Iowa**

"No man will learn anything at all,  
Unless he first will learn humility."

Y. M. C. A.; Zeta; Life Work Recruits, President; Glee Club; Sandburr Staff; Orchestra; Band.

Major—English



**BERNICE VANNICE**

**York**

"All the reasonings of men are not  
worth one sentiment of women."

Y. W. C. A.; Glee Club; W. A. A.

Major—English



**LENORA J. NORFLEET**

**Beaver City**

"Her smile was prodigal of summery shine, —  
Gayly persistent, —like a morn in June. "

Two years—Kearney State Teachers College.  
One summer—Chadron State Teachers College.  
Y. W. C. A.; PALS; Histrionic Club.

Major—History



**LUCILLE WESTWOOD**

**York**

"We cannot fight for love, as men may do,  
We should be woo'd, and were not made to  
woo."

Y. W. C. A.; PALS; W. A. A.

Major—Education



**JAMES SPEECE**

**York**

"For he who is honest is noble,  
Whatever his fortunes or birth."

Histrionic Club, President; Track; Y. M. C. A., President.

Major—Mathematics



Other Juniors—Bruce Freet, York; and

Eleonora Trued, Stromsburg.





# SOPHOMORES



**LUCILE EVANS**

**Aurora**

Y. W. C. A., Cabinet; PALS; Life Work Recruits; Glee Club; Histrionic Club; W. A. A.



**BELVA BLAKELEY TACK** Kearney

Y. W. C. A.; PALS; Glee Club; Piano Recital.



**CHRIS GJERLOFF**

**Marquette**

Glee Club; Y. M. C. A.



**ENOLIA BOND**

**Cambridge, Iowa**

One year—Iowa State Teachers' College. Y. W. C. A.; Zeta; Life Work Recruits, President; Glee Club.



**EVERETT GREEN**

**Polk**

Y. M. C. A.; Zeta; Student Council; Football Student Manager; Basketball; "Y" Club; Band.



**MRS. LEONA BUSSARD**

**Lushton**

Y. W. C. A.; Zeta.



**LEVI S. JOHNSON** Dacoma, Oklahoma

Y. M. C. A.; PALS; Life Work Recruits; Forensic Club; Debate.



**LUCILE DIERDORFF**

Y. W. C. A., Cabinet; PALS; W. A. A.; Class President.





**WILMA KARRE**

Cotesfield

Zeta.



**MARION KEALIHHER**

Bradshaw

Y. M. C. A.; PALS; Glee Club; Cheer Leader.



**TOM KING**

York

PALS; Panther Club, President.



**PAULINE KOPCHO**

York

Y. W. C. A.

**ELLA LARSEN** Stickney, South Dakota

Y. W. C. A.; Zeta; Panther Club; Glee Club.



**MELBA MANNING**

York

Y. W. C. A.; PALS; Glee Club; Histrionic Club; W. A. A.



**HOWARD MAY**

York

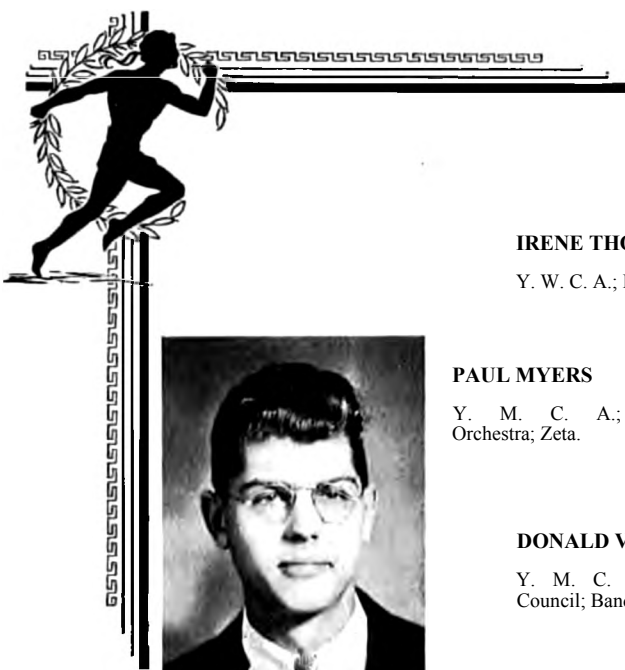
Football; "Y" Club.



**PAUL MOHLER** Humacao, Puerto Rico

Y. M. C. A., Cabinet; PALS; Glee Club.





**IRENE THOMPSON**

**York**

Y. W. C. A.; PALS; Class President; W. A. A.



**PAUL MYERS**

**Garwin, Iowa**

Y. M. C. A.; Life Work Recruits; Band; Orchestra; Zeta.



**DONALD VARCOE**

**Benedict**

Y. M. C. A.; Zeta; Life Work Recruits; Student Council; Band; Orchestra; Glee Club.

**NELSON RONNE**

**Lushton**

Y. M. C. A.



**WILLARD WALKER** **Clayton, Kansas**

Y. M. C. A.; Zeta; Football

**RUTH SPORE**

**York**

Y. W. C. A., President; PALS; Student Council; Panther Club; W. A. A., President; Sandburr Staff.



**VIOLA WIMMER**

**Portis, Kansas**

Y. W. C. A.; Zeta; Life Work Recruits; Glee Club.

**WARREN WITHAM**

**Agra, Kansas**

Y. M. C. A.; Zeta.



**ORMAL TACK**

**Harlan, Kansas**

One semester—Bethany College  
 One semester—Kansas Wesleyan University  
 Y. M. C. A., Cabinet; Zeta; Glee Club; Revelers;  
 Histrionic Club; Director College Band.

Other Sophomores: Dorothy Brook, York;  
 Howard Caldwell, San German, P. R.; Chester  
 Freet, York; Carl Lee, Dawson; Samuel Lee,  
 Dawson; Wilmer Maley, Peetz, Colo.; Margaret  
 Neff, Utica; Wayne Norwood, York; Constan-  
 tine Trued, Stromsburg; J. M. Wilson, York;  
 Harry Stephenson, Fairmont.



**FRESHMEN**



**PAUL BUTTERMORE** Woodston, Kansas



**MARGARET AKOFER** York  
W. A. A.; Zeta.

**ALLEGRA BYRNES** York  
Y. W. C. A.; PALS; W. A. A.



**GOLDIE ARBEITER** York

**JANE CALDWELL** York  
Y. W. C. A.; Zeta.



**WILMA BOND** Cambridge, Iowa  
Y. W. C. A.; Zeta; Life Work Recruits.

**FERN CARSON** Chariton, Iowa  
Y. W. C. A.; Life Work Recruits; Zeta.



**LAWRENCE CASEBEER** York  
Y. M. C. A.



**JEAN BROWN** York



**ROBERT HAWLEY** Muscatine, Iowa  
Y. M. C. A.; Zeta; Alpha Sigma Phi; Debate.



**EDNA COUFAL,** York



**BEVERLY J. HENNINGS** Gresham  
Y. W. C. A., Cabinet; Zeta; Band; Orchestra.



**LEOLA CRAIG** Panama  
Y. W. C. A.; Zeta; Glee Club.



**MARVIN HESS** Shelby  
Y. M. C. A.; Zeta; Alpha Sigma Phi; Histrionic Club; Debate.



**ELIZABETH FEEMSTER** York  
Y. W. C. A.; W. A. A.



**DONALD C. HITCHCOCK** York  
Glee Club

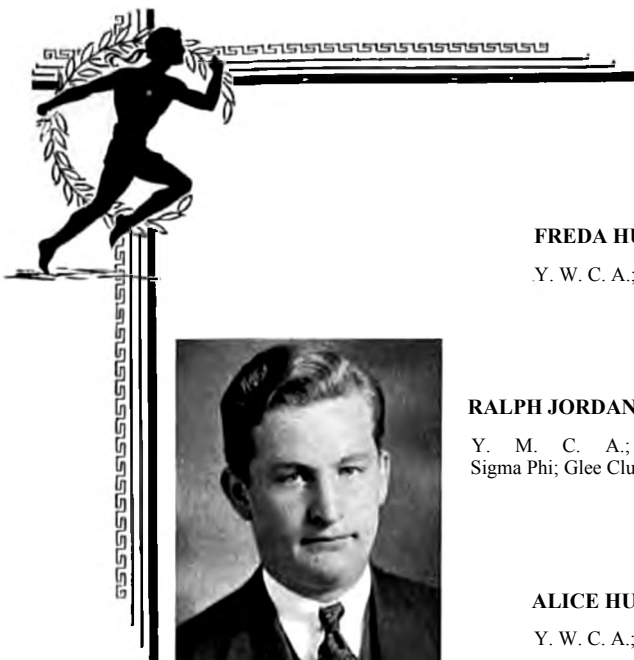


**IRENE HOFGARD** Torrington, Wyoming  
Y. W. C. A.; Zeta; Panther Club; Histrionic Club; W. A. A.



**WADE GREENE** York  
Y. M. C. A.





**FREDA HUEBERT**

**Stockham**

Y. W. C. A.; PALS.



**RALPH JORDAN**

**Beloit, Kansas**

Y. M. C. A.; Zeta; Band; Orchestra; Alpha Sigma Phi; Glee Club.



**ALICE HUENEFELD**

**Aurora**

Y. W. C. A.; Life Work Recruits.



**VIVIAN KLONE**

**Waco**

Histrionic Club.



**ROBERTA M. JAMES**

**York**

Y. W. C. A.; Sandburr Staff.



**LaVELLE LEASE**

**Sumner, Iowa**

Life Work Recruits; Histrionic Club; Y. W. C. A.; Band; Orchestra; Glee Club.



**GERALDINE JOHNSON**

**Berthoud, Colorado**

Y. W. C. A.; Zeta; Life Work Recruits; Histrionic Club; W. A. A., President.



**WENDELL JOHNSON**

**York**

Y. M. C. A.



**IRVIN G. LEWIS**

**Aurora**

Y. M. C. A., Cabinet; PALS; Class President; Alpha Sigma Phi; Debate; Sandburr Staff; Histrionic Club.



**VELMA NEIDERGERKE**

**York**



**ROBERT OLIVER**

**Shelton**

Y. M. C. A.; PALS.



**MARVELLE MILLER**

**Defiance, Ohio**



**DOROTHY MIRACLE**

**Geneva**

Y. W. C. A.; Zeta; Glee Club.



**MAX RIGGS**

**Des Moines, Iowa**

Y. M. C. A.; PALS; Alpha Sigma Phi; Glee Club; Histrionic Club; Band.

**OSIE NEFF**

**Coppock, Iowa**



**VALDA MARTEN**

**Bridgewater, Iowa**

Y. W. C. A.; Histrionic Club; W. A. A.



**BEATRICE REYNOLDS**

**Seward**



**HAROLD RIGGS**

**Hudson, Iowa**

Y. M. C. A.; Band





**ALICE RODD** Loup City  
W. A. A.; Histrionic Club.



**EDWARD SCHOENTHAL** Gresham  
Basketball.



**LETA SHAW** Bushnell



**RALPH SITTLER** Mema  
Y. M. C. A.; Zeta; Life Work Recruits; Glee Club; Histrionic Club; Band.

**BERYL SMITH** Polk  
One semester—Nebraska Central College  
Histrionic Club; Glee Club; Y. W. C. A.



**CECIL SMITH** Van Nuys, California  
Track; Football; "Y" Club.



**JOHN SULLIVAN** York



**WILLIAM TAYLOR** York



**WILLIAM THOMAS** Seward  
Football; Basketball.



**VIRGINIA TORELL** Gresham  
Zeta; Band; Histrionic Club.



**BENARD WALL** Henderson  
Zeta.



**EDWARD VAN ALLEN** Gresham



**LOIS WITTMAYER** York  
Zeta.



**FLORENCE BELLE WAGGONER** Elba  
Y. W. C. A.; PALS; W. A. A.



**HILDA JEANE WOMER** Smith Center, Kansas  
Y. W. C. A.; PALS; Histrionic Club; W. A. A.



**VIRGIL R. WALKER** Smith Center, Kansas  
Y. M. C. A.; PALS; Histrionic Club; Band; Orchestra; Football; "Y" Club.



**HOWARD WRIGHT** York  
Y. M. C. A.; Zeta; Glee Club.



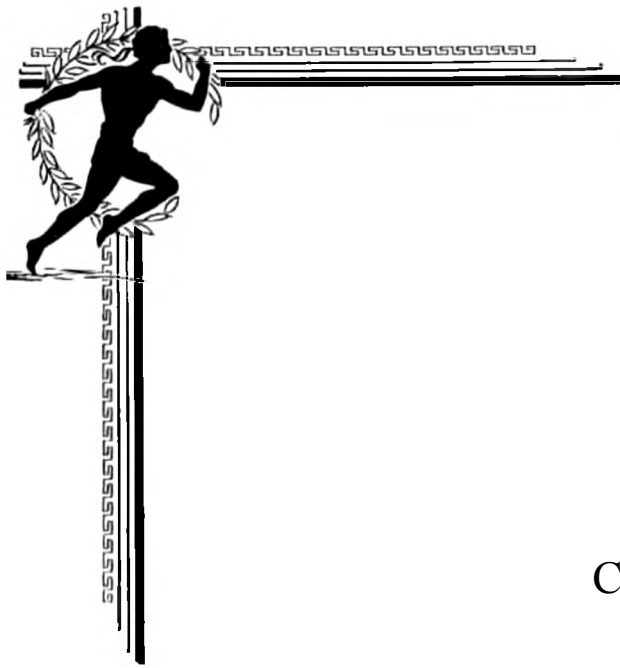
**LOUISE WALKUP** York  
Y. W. C. A.; Histrionic Club.



**LETA YOST** York  
Y. W. C. A.; PALS; Histrionic Club; W. A. A.; Cheer Leader.



Other Freshmen: Dale Adams, Dannebrog; Wendell Bemis, York; Joe Blair, Waco; Mary Foster, York; Jerome Fuller, York; Edward Haldeman, Concordia, Kansas; Lyndon Lowder, Ansley; Lawrence McClun, Panama; Jerome Macoy, York; Dorothy Riggs, Hudson, Iowa; Victor Robbins, Green, Kansas; Mitchell Samuelson, York; Harold Taylor, Peetz, Colorado; George Wallander, York.



## College Song

---

On the hill of the rising sun,  
Stands the college we hold so dear.  
Rooted deep is our loyalty;  
Grounded firm is our faith sincere.

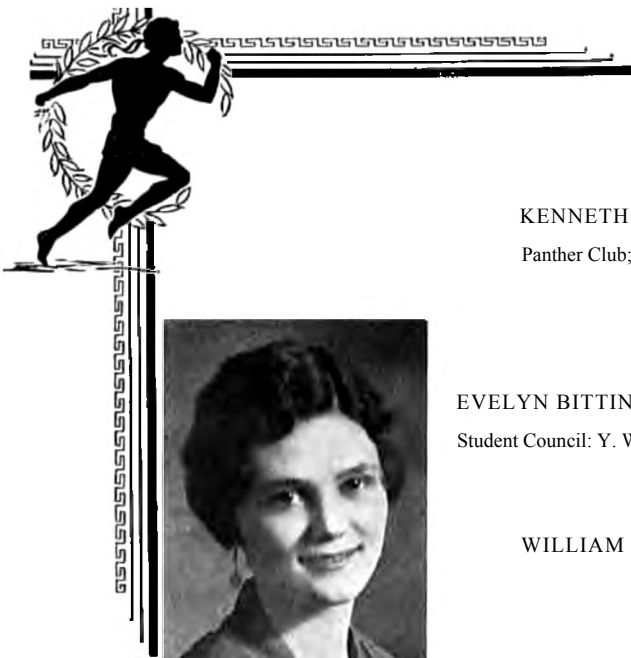
In our hearts will ever, ever be  
Blue and White a blessed memory.  
Through the years our voices raise in praise to thee.  
All Hail! Hail! York!

Looking down on the busy town  
Stands the college with aims so high;  
For the best in our work and sport  
We are glad we can sound the cry.

Ruby Carol Rickard



**BUSINESS COLLEGE**



KENNETH NELSON Edmond, Kansas  
Panther Club; Zeta; Y. M. C. A.



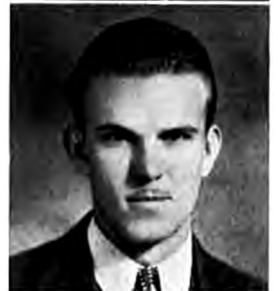
EVELYN BITTINGER York  
Student Council; Y. W. C. A.



WILLIAM TAYLOR York



RUTH COLMAN Utica  
Histrionic Club.



LEONARD THOMPSON Densmore, Kansas  
Zeta; President Commercial Dept.; Y. M. C. A.



GERALDINE LAMB York



MARJORIE WHELAN York



BLAINE WHEELER York  
Zeta,



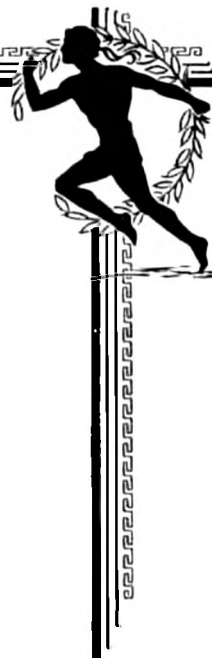
KENNETH LIEDTKE Benedict

Other Students in the Department: Maxine Frazer, Utica; Howard Cooper, York; J. Donald Fisher, North Loup; Angela Friel, York; Doris Moomey, York; Anne Rockwell, York; Richard Green, York; Dorothy Cavender, York; Maxine Cook, York; Winifred Jo Smith, York.

# ACTIVITIES







*Front Row*—Alma Walker (W. A. A. ); Arthur Amadon (Junior); Tennis Hoffman (President); Prof. Ray Hill (Faculty); Evelyn McKain (Conservatory).

*Second Row*—Evelyn Bittinger (Business College); William Hice (Senior); Melvin Thompson (PALS); Jack Graham (Y Club); Frances Kimball (Y. W. C. A. ).

*Third Row*—Lyndle Moore (Y. M. C. A. ); Donald Varcoe (Sophomore); Howard Wright (Freshman); Roger Ehlers (Zeta).

## Student Council

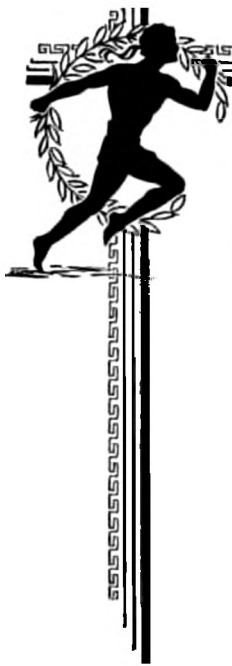
The Student Council, organised in 1928, is the most powerful student organisation of York College. Not only does it regulate all student activities, but provision has also been made for it to act, should occasion ever arise, as the mediator in misunderstandings between the faculty and the student body.

This year's work of the Council was noteworthy because that group clarified matters which had been under discussion for some time. Immediately after the opening of college the Council was called together by Tennis Hoffman, who had been elected president by a student vote in May, 1933. At this meeting William Hice was chosen vice-president, while Jack Graham was elected secretary-treasurer.

The first project of the Council was the writing of a code of rules for the enforcement of the freshman regulations. This code stated that each person not conforming to the regulations was to receive a "penalty" in proportion to his "crime."

The next major work was the cataloging of the emblems of campus organisations. For several years it had been recognised that a definite understanding was needed among college societies regarding the extent to which the insignia of one group might resemble that of another group. After all difficulties had been settled, each organisation's emblem was registered with the Student Council. At the same time, a ruling was made saying that all organisations created after January 1, 1934, must receive the Council's approbation of their emblems before they can be officially worn.

Other questions arose during the year and each time the Council emphatically, yet fairly, declared itself to be the final arbiter of all intramural disputes. Because of such a stand, the Council gained the respect of everyone connected with the activities of York College.



First Row—Russel Lewis, Margaret Johnson, Henry Franz, LeRoy Ayers, Evelyn Dixon, Edith Lawson.  
 Second Row—John Boren, Raymond Wochner, Miss Edith Callender, William Hice, Arthur Amadon, Jack Graham.

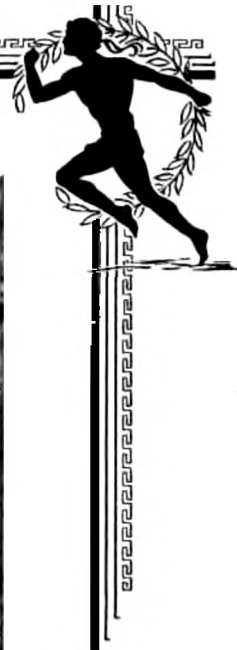
## The Marathon Board

Le Roy Ayers	/	/	/	/	/	/	/	/	<i>Editor-in-Chief</i>
Henry Franz	/	/	/	/	/	/	/	/	<i>Associate Editor</i>
William Hice	/	/	/	/	/	/	/	/	<i>Literary Editor</i>
Russel Lewis	/	/	/	/	/	/	/	/	<i>Sports Editor</i>
Arthur Amadon	/	/	/	/	/	/	/	/	<i>Art Editor</i>
John Boren	/	/	/	/	/	/	/	/	<i>Feature Editor</i>
Margaret Johnson	/	/	/	/	/	/	/	/	<i>Snapshot Editor</i>
Evelyn Dixon	/	/	/	/	/	/	/	/	<i>Business Manager</i>
Raymond Wochner	/	/	/	/	/	/	/	/	<i>Advertising Manager</i>
Evangeline Steen	/	/	/	/	/	/	/	/	<i>Assistant Advertising Manager</i>
Jack Graham	/	/	/	/	/	/	/	/	<i>Sales Manager</i>
Edith Lawson	/	/	/	/	/	/	/	/	<i>Staff Typist</i>
Miss Edith Callender	/	/	/	/	/	/	/	/	<i>Faculty Critic</i>

The first "Marathon" was published in 1917 by the junior class. It derived its name from the elm grove along the northern edge of the campus which was, and still is, known as Marathon Park. Because of the numerous conferences held in that park, the publication board of the first year book produced at York College decided to call its annual "The Marathon." Each successive board with one exception has retained the same name for its book. Today all students would consider it a violation of tradition even to hint at a change of name for the annual.

The members of the Marathon Board who present this book to their fellow students have tried to make it the finest annual yet produced at York College. Having used the past annuals as stepping stones to the production of this book, they, in turn, have hoped that this work will serve only as the herald of a series of still more commendable York College "Marathons."





Front Row—Harry Stephenson, Marian Hill, Jack Graham, Melvin Thompson, Marian Shambaugh, Mildred Thompson.  
 Second Row---Irvin Lewis, Prof. J. C. Morgan, Carroll Myers, Miss Edith Callender, Ruth Spore.

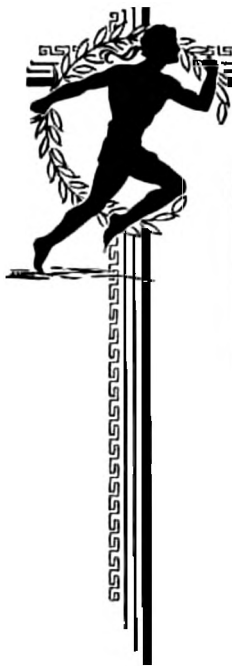
## The Sandburr Staff

Melvin Thompson	Editor-in-Chief
Jack Graham	Business Manager
Marian Shambaugh	Organizations Editor
Harry Stephenson	Sports Editor
Prof. J. C. Morgan	Alumni Editor
Irvin Lewis	Sports Reporter
Ruth Spore	Reporter
Carroll Myers	Reporter
Marian Hill	Reporter
Mildred Thompson	Staff Typist
Miss Edith Callender	Faculty Critic

“The Sandburr” was first published in the year 1900, ten years after the founding of the college itself. It was originally printed as a monthly magazine, but it was realized some years later that, due to an increasing number of activities, a new form for “The Sandburr” was needed. Consequently those in charge decided to have it issued as a fortnightly newspaper. That policy has been strictly adhered to ever since.

This year the paper while it lived up to the high standards of the past, also had several innovations which were decided improvements in its appearance. One was a new type set up for headlines. The other was a new type set up and a new arrangement of the editorial page.

Students who were in college this year already realize that “The Sandburr,” with “The Marathon,” will not fail to bring back pleasant memories of college days.



*Front Row*—Beverly Hennings (Publicity); Evelyn McKain (Vice President); Marian Hill (President); Ruth Spore (Devotional); Mildred Thompson (Social Service).  
*Second Row*—Mrs. J. R. Overmiller (Church Adviser); Neva Fellman (Social); Ella Larsen (Treasurer); Miss Anna Thompson (Faculty Adviser).  
*Third Row*—Melba Manning (Secretary); Lucile Evans (Estes Park); Frances Kimball (Council Representative); Evangeline Steen (World Fellowship).

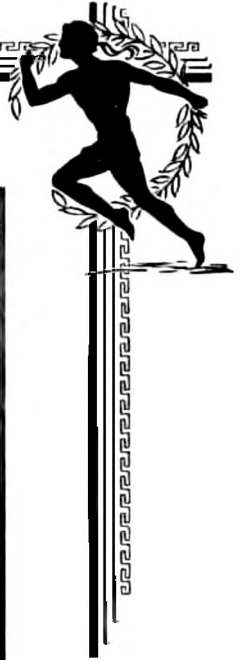
## Young Women's Christian Association

The Y. W. G. A. attempts to strengthen a young woman's usefulness in life by imparting a working knowledge of the principles of Christianity. In order to accomplish this purpose, a varied program of activities was presented this year. This program was a stimulating and dynamic one which proved that Christianity can be vital and compelling. The first step taken by the Y. W. C. A. was on the opening day of the fall semester when each new girl on the campus (called a little sister) was assigned to some girl who had been in college before (called a big sister). The aim of this plan was to help the new co-eds to become acquainted as soon as possible. Then, as a gesture of friendliness, the association tendered a tea to all women on the campus. At that time all non-members were given an opportunity to become affiliated with the association if they wished to do so.

During the year meetings were held on every Tuesday morning. At those meetings subjects affecting the interests of young women were discussed. Sometimes students presented the program. At other times outside speakers were secured. At all times, though, only the means which best advanced the cause of the organization were used.

Making plans for the group was the duty of the cabinet. The young women on this cabinet were the nucleus of the association and were responsible for its progress. Meetings of the cabinet were held weekly and frequently joint meetings of a social and business nature were held with the Y. M. C. A. cabinet.

The spring program was of such a nature that some part appealed to every college woman. Several salmagundis were held; a banquet complimentary to the new president, Ruth Spore, and her officers was given; a women's all-college tennis tournament was sponsored; and the annual May Day fete was presented. The work done by the Y. W. C. A. well attests its value.



*Front Row*—David Ender (Treasurer); Prof. Ray Hill (Faculty Sponsor); Russel Lewis (President); John Boren (Program Chairman); Floyd Merchant.

*Second Row*—William Hice; Raymond Wochner (Vice-President); Tennis Hoffman; James Speece; Paul Mohler.

*Third Row*—Milton Maurer; Howard Caldwell (Secretary); Howard Wright; Robert Hawley.

## Young Men's Christian Association

The Young Men's Christian Association offers to men of the College an opportunity to acquire a sound spiritual basis for their lives and at the same time to cultivate happy and lasting fellowships. In this organization men with similar conceptions of ideals, character, and spiritual truths meet in a united effort for clean living. The ultimate goal of the group is a four-square development in the realm of mental, spiritual, social, and physical life.

In the weekly meetings programs of a common interest to all are presented. Association members often appear on the morning's program and thus an opportunity is afforded to develop talent and leadership in the individual. Professional men have spoken several times at the meetings, adding not only variation to the programs, but also giving vocational and educational points as well.

The social side of the organization is not lacking in development. The watermelon "feed," held early in the first semester, helped old and new members to meet in an informal manner. Social meetings at the city Y. M. C. A. offered further opportunities for intimate acquaintance. The Y. M. C. A. was a co-sponsor of the all-college Jolly-up held at the beginning of the first term in the gymnasium. Reciprocal entertainments in the form of picnics, dinners, contests and programs were enjoyed with the Y. W. C. A. cabinet and members during the year.

The 1934 spring program of events included a varied number of activities. The sponsoring of an all-college men's tennis tourney; plans for a representation at the Estes Park summer conference; completion of the furnishing of the men's lounging room as a recreation and fellowship room for members of the association; and the presentation of the annual May Day fete, which was held May 18, in cooperation with the Y. W. C. A., were outstanding undertakings of the organization.



Front Row—Lucille Westwood; Russell Smith (Treasurer); Alma Walker (Pianist); David Ender (Sergeant-at-Arms); Ruth Spore (Secretary); Raymond Wochner (President); Evelyn Dixon (Vice President); Floyd Merchant (Chaplain); Harry Stephenson; Irene Thompson; Arthur Amadon (Chorister).

Second Row—Levi Johnson; Prof. E. I. Doty (Faculty Critic); Lenora Norfleet; Lucile Evans; Jean Brown; Max Riggs; Dean Kimball; Melvin Thompson; Leta Shaw; Leta Yost; Allegra Byrnes; Russel Lewis; Calvin Feemster; Bernabe Herrera.

Third Row—Marion Kealiher; Hilda Jeane Womer; Freda Huebert; Melba Manning; Belva Blakeley Tack; Melvin Tack; Florence Belle Waggoner; Marian Hill; Evelyn McKain; Marion Shambaugh; Robert Oliver; Irvin Lewis; Lyndle Moore; Henry Franz.

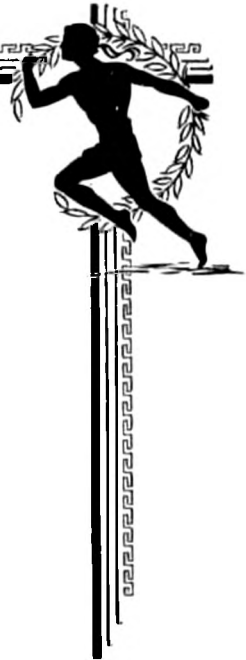


## PALS Literary Society

The PALS Literary Society is one of the oldest organizations on the campus. The present name, however, was not adopted until about 1914-15 when a contraction of the joint name, Philomathean-Amphictyon Literary Society seemed advisable. The Philomathean Society for women and the Amphictyon for men had always had a joint organization and held regular joint meetings. For more than ten years all of the meetings have been joint.

Meetings are conducted on alternate Tuesdays in the PALS' hall, and programs are arranged in conformity with the society's purpose to stress forensic and parliamentary exercises and to foster a democratic social spirit. The reception early in the year was attended by a large number of members and other students. About twenty-five new members have been initiated during the course of the year. A number of social evenings have been enjoyed by the group, and the annual banquet and the picnic will close the year's social program of 1933-34.

Splendid cooperation for the attainment of a common end was evinced during the entire year by the PALS and Zeta organizations. Two joint meetings were held and were especially well attended. A debate, staged between teams of the two groups, proved their common interest in forensic accomplishments.



*Front Row*—Marvin Hess; Paul Buttermore; Victor Robbins; Ralph Jordan; Allen Kellogg; Benard Wall; Donald Varcoe; Jack Graham.

*Second Row*—Lawrence McClun; Leola Craig; Willard Walker (Sergeant-at-Arms); Edith Lawson (Secretary-Treasurer); Vernie Buttermore (President); Prof. Ray Hill (Faculty Sponsor); Viola Wimmer (Pianist); Tennis Hoffman (Chorister); Frances Kimball (Chaplain); Robert Hawley; Lois Wittmeyer.

*Third Row*—Beverly Hennings; Veryl Burch; Geraldine Johnson; Neva Fellman; Ella Larsen; Ormal Tack; Howard Caldwell; Dorothy Miracle; Jerome Fuller; Beryl Smith; Virginia Torell; Enolia Bond; Evangeline Steen; Wilma Bond; Roberto Larracuenta; Clyde Wells.

*Fourth Row*—Wilma Karre; Paul Myers; Howard Wright; Warren Witham; Robert Graham; Carroll Myers; Walter Speece; William Hice; Everett Green; Ralph Sittler; Harold Burhoop; Mildred Thompson; Leona Bussard; Fern Carson; Roger Ehlers; Nelson Ronne.

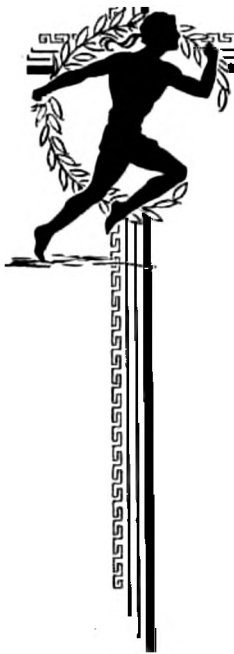


## Zeta Literary Society

The Zeta Literary Society, which meets on alternate Tuesday evenings, had its origin in 1914. It is an organization of students who are interested in the promotion of social culture, scholarship and refinement.

The first semester's program was opened with a reception for the faculty and non-members. As a result of this reception, the membership of the society was more than doubled. Attention was next centered on a series of programs dealing with the culture and accomplishments of the European nations. At the close of the semester, the members voted to leave as a gift to the society a purple velvet banner on which was the word "Zeta" in gold. Previously in the semester, purple and gold had been made the group's official colors.

The general theme for the second semester's meetings was "Dominant influences in contemporary American life." Among the influences discussed were the negro, religion, leisure time, music and the fine arts, and economics. During this semester many forward steps were taken by the society. The emblem shown above became the official pin; a joint code was formulated with the PALS Literary Society; and the society's constitution was revised. The social side was never overlooked while the above work was being accomplished. Several parties were given which have since been included among the year's outstanding college social events.



*Front Row*—Jack Graham; Evelyn Dixon; Prof. J. C. Morgan; William Hice; Miss Alma Tress Lundman; Marian Hill; Robert Hawley.

*Second Row*—Frances Kimball; Max Riggs; Dean Kimball; Marvin Hess; Beryl Smith.

*Third Row*—Levi Johnson; Irvin Lewis; Raymond Wochner; Russel Lewis; Rodney Whittemore.

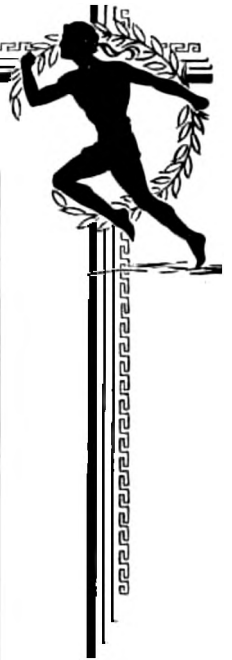
## Alpha Sigma Phi

Within the past few years, forensic work has emerged from comparative insignificance to a place of undisputed prominence on the campus. The first attempt to organize those interested in forensic work was in the spring of 1930 when the Forensic Club was created. The members of this club injected new life into debate and oratory. A week's debate tour of Kansas was made in February, 1933. Entries in the state oratorical and extemporaneous speaking contests of the Nebraska Intercollegiate Forensic Association were also regularly made. As a result several honors have been won by York contestants. During the past year alone, Marian Hill won second place in the Women's Oratorical contest, while William Hice won third place in the Old Line Oratorical contest.

Because the Forensic Club, during its short period of existence had made an enviable record for itself, its officers decided to try to have it become affiliated with Alpha Sigma Phi, national honorary forensic fraternity. This was in the spring of 1933. A petition for membership was sent in and in December word was received that that petition had been accepted. By this action the Forensic Club passed out of existence and taking its place was the Theta Chapter of Alpha Sigma Phi. The charter members of the local chapter were: William Hice, Jack Craham, Russel Lewis, Raymond Wochner, Rodney Whittemore, Theron Maxson, Dean Kimball, Frances Kimball, Evelyn Dixon, Teresa Lou Connely, Miss Alma Tress Lundman and Professor J. C. Morgan.

The introduction of the Theta chapter of Alpha Sigma Phi was important from two standpoints. First, this was the first time York College had ever had a chapter of an honorary fraternity of a national scope, and second, the honor bestowed upon the school showed clearly that the forensic work of York College had been noteworthy enough to gain its admission into this fraternity which counts among its chapters colleges and universities in Ohio, West Virginia, Indiana, Florida, and Tennessee.





Front Roto—Evelyn Dixon; Raymond Wochner; Dean Kimball; William Hice (President);  
Frances Kimball (Secretary-Treasurer).

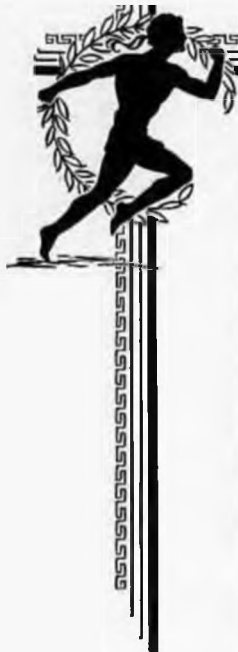
Second Roto—Jack Graham; Prof. J. C. Morgan; Russel Lewis (Vice President); Miss Alma  
Tress Lundman; Rodney Whittemore.

## Debate

With eight lettermen and a wealth of new material present when the 1934 debate season drew near, prospects for a championship team were brighter than they had been for some years. Before long, however, several students found it necessary to give up their debate work. This process of elimination continued until only two lettermen and four non-lettermen were left who were doing intensive work upon the subject.

The national Pi Kappa Delta question was used as the basis for all debates between the members of the Nebraska Intercollegiate Forensic Association. Prior to the opening of the intercollegiate debating season, Professor J. C. Morgan and Miss Alma Tress Lundman, the coaches, arranged an intramural debating program consisting of the annual Y. M. C. A. Y. W. C. A. and the Zeta-PALS debates as well as a series of round-robin debates among the local group. From these contests the members of the various teams for the season were selected. The A team consisted of William Hice, three year letterman, and Irvin Lewis, freshman. The B1 team members were Russel Lewis, three year letterman, and Levi Johnson, sophomore. Marvin Hess and Robert Hawley, the B2 team, were freshmen.

The intercollegiate season was opened with a triangular debate with Nebraska Central College with the A team emerging with a 3-0 victory. The next feature on the debate calendar was the state debate tournament at Hastings College. A total of eleven Nebraska colleges was entered in this tournament. York's A team won decisions from the A teams of Dana College, Omaha Municipal University, and Doane College. In the B tournament, the York B1 team defeated the Hastings College B1, the Nebraska Wesleyan University B2, and the York B2 teams. The York B2 team, or freshman team as it was dubbed at the tournament, also won a victory over the Nebraska Wesleyan University B2 team. The 1934 debate season ended with the conclusion of the tournament and while the number of victories was not large, each debater felt that he had learned much that he could apply to his other fields of endeavor.



Front Row—Vernie Buttermore; Lila Elam (Vice President); Tom King (President); Mildred Thompson (Secretary-Treasurer); Roger Ehlers.

Second Row—Geraldine Lamb; Prof. Chris Keim; Miss Mary Alice Slee; George Wallander.

Third Row—Ruth Spore; Kenneth Nelson; Irene Hofgard.

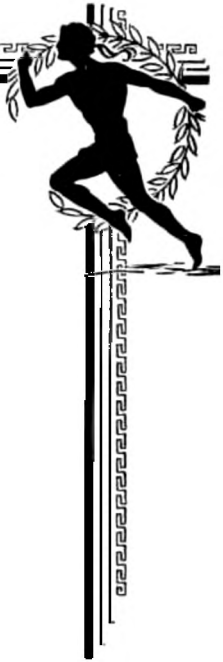
## Panther Club

A characteristic of all college life is the enthusiasm and spirit prevalent individually and collectively in the student body. Without these qualities, campus life would assume a colorless, monotonous aspect. "Pep" is a leading and necessary factor in all undertakings; as a spark can be fanned into a flaming torch that lights the way to success, so can an ember of spirit be whipped into the enthusiasm that lends savor to college life. That is the purpose of the Panther Club—to create, to boost, and to lead the spirit of York College.

One of the most successful channels for the promulgation of spirit was the spontaneous and original "pep chapels" sponsored by this group. At the approach of intercollegiate contests, the student body found the Panther Club a ready nucleus for the creation of this stimulant so necessary in all competition.

An outstanding accomplishment of the Panther Club was the organization of a group which later developed into the College band. It first functioned during the football season as a "pep band" at chapel and at games. When basketball took the spot-light, the band was organized into a uniformed drill team which functioned at varsity games. Later, as more musicians joined the group, it became officially known as the College band and was sponsored by Prof. Chris Keim.

Since the organization of the Panther Club in 1926, it has annually supervised the banquet honoring the football men. The 1933 banquet was outstanding both in attendance and in originality. A Panther Sweetheart and a representative football man were chosen by the team. Much interest was added to the occasion when at the banquet the two honored persons were called upon to give toasts and their identity was made known. It was a revival of a discontinued custom, and was this year a feature of the football banquet worthy of becoming a tradition at York College.



*Front Row*—Fern Carson; Leola Craig; Louise Walkup; Mrs. J. A. Giauque; Margaret Neff; Osie Neff; Bernice Vannice; Allegra Byrnes.

*Second Row*—Vernie Buttermore; Vivian Klone; Valda Marten; Ruth Colman; Dean Kimball; Goldie Arbeiter; Dorothy Miracle; Leona Bussard; Bernabe Herrera.

*Third Row*—LaVelle Lease; Erma Cooper; Beverly Hennings; Maxine Barr; Freda Huebert; Virginia Torell; Marian Hill.

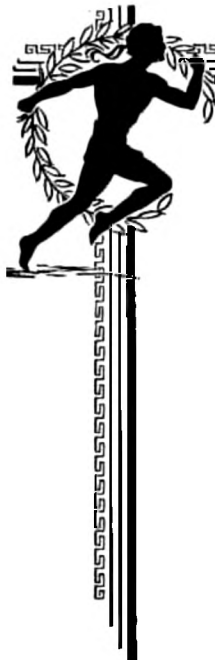
## The Art Department

Man may express his aesthetic sense through music, dramatics or art. York College has realized that this aesthetic sense must be concomitantly developed with the other aspects of an individual's life. Therefore, the art department is given its due emphasis by those in charge of the curriculum of the institution.

The art department is composed of students who are taking art with a view to teaching it, those who plan to make some other practical use of it, and those who are taking it as one of their electives. Due to the unified interests of these students, a great amount of work is accomplished by the department and the individual development is always marked.

Not only do the students in the department enjoy their classroom associations but they also plan a number of social affairs which draw them together in a more informal manner. In the fall, soon after college had opened, those persons enrolled for art had a picnic in a favorite grove bordering the banks of a creek near York. This picnic, as it was the department's first social affair of the year, helped the students to become better acquainted with each other and instilled in them a desire to have more such gatherings.

But the major work of the department is not to develop the student's social life. Its true purpose is to foster an appreciation of the work of others and to develop, at the same time, the student's own ability to express himself. To show this development, Mrs. Giauque always holds an art exhibit which is a part of the commencement week program. These yearly art exhibits have always commanded the attention of students, faculty and townspeople. Because of this, and because art is constantly coming to play a greater role in this community, this year's art exhibit should establish a new all-time attendance record.



Front Row—Vernie Buttermore (Gospel Team Chairman); Neva Fellman (Program Chairman);  
Pres. J. R. Overmiller; Enola Bond (President); Rev. Paul Porter, LaVelle Lease  
(Treasurer); Carl Lee (Vice-President).  
Second Row—Miss Emma Fye; Bernabe Herrera; Viola Wimmer; Levi Johnson; Dean Kimball;  
Carroll Myers; Geraldine Johnson; Alma Walker; Alice Huenefeld.  
Third Row—Marian Hill; Frances Kimball; Virgil Walker; Paul Myers; Willard Walker; Donald  
Varcoe; Fern Carson; Wilma Bond.

## Life Work Recruits

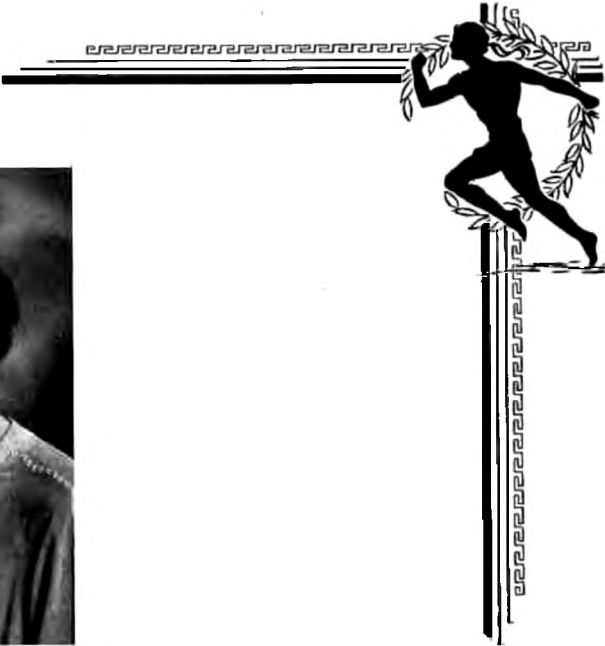
The Life Work Recruits are a group of students interested not only in developing spiritual life to the fullest extent, but also in stimulating religious attitudes on the campus.

To carry out such a purpose, members of the organization, during the past year, sponsored a varied program of activities which has touched to some degree, all students of the institution. When Bishop Ira D. Warner of the Pacific Coast area spoke on the spiritual relationships of God and man at a series of college convocations and church meetings, it was the Life Work Recruits who were always ready to assist Bishop Warner in his meetings.

The spiritual influence of the Recruits was not confined to campus life only, but was also expanded into broader fields. Through their efforts gospel teams, composed of Recruit members and other interested students, were formed. The teams presented varied programs and their many appearances were events of mutual benefit both to the congregations before whom they appeared and to the individuals who participated.

Every organization has certain financial obligations which arise from its activities. The Life Work Recruits, together with the other religious organizations, partially met their obligations by bringing several entertainments to the campus. The first program was an electrical exhibition by Glenn L. Morris. The second program was the presentation of an illustrated lecture of the Byrd Antarctic Expedition by one of its members, Charles E. Lofgren.

The regular meetings of the Recruits held each Monday evening at the Conservatory offered an opportunity for worship as well as for the transaction of the organization's official business. They were characterized by programs which brought words of advice from men competent to speak concerning Christian work.



MISS ALMA TRESS LUNDMAN  
Director

# Histrionic Club

FIRST SEMESTER OFFICERS

- President*.....Lucile Evans
- Vice-President*.....Ormal Tack
- Secretary*.....LaVelle Lease
- Treasurer*.....Irene Hofgard
- Business Manager*.....William Hice

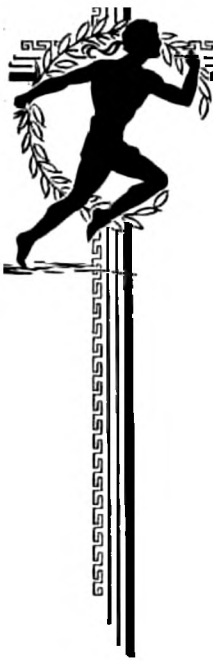
Second Semester Officers

- President*.....Lucile Evans
- Vice-President*.....Marion Shambaugh
- Secretary*.....Melba Manning
- Treasurer*.....Hilda Jean Womer
- Business Manager*.....Max Riggs

MEMBERS

- |                   |                   |
|-------------------|-------------------|
| Harold Burhoop    | Geraldine Johnson |
| Clifford Campbell | LaVelle Lease     |
| Dorothy Cavender  | Irvin Lewis       |
| Ruth Colman       | Melba Manning     |
| Lucile Dierdorff  | Valda Marten      |
| Evelyn Dixon      | Margaret Neff     |
| Lenora Norfleet   | Marion Shambaugh  |
| Dorothy Riggs     | Ralph Sittler     |
| Max Riggs         | Beryl Smith       |
| Victor Robbins    | John Sullivan     |
| Alice Rodd        | Ormal Tack        |
| Nelson Ronne      | Vera Thamer       |
| Lucile Evans      | Mildred Thompson  |
| Maxine Frazer     | Virginia Torell   |
| Jerome Fuller     | Virgil Walker     |
| Bernabe Herrera   | Louise Walkup     |
| Marvin Hess       | Lucille Westwood  |
| William Hice      | Hilda Jeane Womer |
| Irene Hofgard     | Leta Yost         |

Major productions of the 1933-1934 season were: "So This Is London" by Arthur Goodrich, "He and She" by Rachel Grothers, and a series of three short plays.



*Front Row (seated)*—Ormal Tack, Dorothy Riggs, Irene Hofgard, William Hice, Lucile Evans, Evelyn Dixon.

*Second Row*—Nelson Ronne, Max Riggs, Miss Alma Tress Lundman, Director; Bernabe Herrera, Harold Burhoop, Marvin Hess.

### SO THIS IS LONDON

#### Cast

Hiram Draper, Jr. (Called "Junior").....	<i>William Hice</i>
Elinor Beauchamp.....	<i>Irene Hofgard</i>
Hiram Draper, Sr.....	<i>Mamin Hess</i>
Mrs. Hiram Draper.....	<i>Evelyn Dixon</i>
Sir Percy Beauchamp.....	<i>Ormal Tack</i>
Lady Beauchamp.....	<i>Dorothy Riggs</i>
Lady Amy Duckworth.....	<i>Lucile Evans</i>
Alfred Honeycutt.....	<i>Bernabe Herrera</i>
Thomas, Sir Percy Beauchamp's butler.....	<i>Nelson Ronne</i>
Jennings, Lady Amy Duckworth's butler.....	<i>Max Riggs</i>
A Flunky at the Ritz.....	<i>Harold Burhoop</i>

On the evening of November 10, the Histrionic Club opened its 1933-1934 season by presenting Arthur Goodrich's three-act comedy, "So This Is London," in the high school auditorium. This play was also the initial event for the annual homecoming activities.

The plot of "So This Is London" concerned a typical American and a likewise typical English family who would have nothing to do with each other. Hiram Draper, Jr., son of a rich American shoe manufacturer, had become engaged to Elinor Beauchamp, daughter of Sir Percy Beauchamp, an English manufacturer of shoes. This engagement threw both families into consternation when they learned of it. Hiram Draper imagined that all Englishmen are a ludicrous set of haw-hawing nincompoops, while Sir Percy was convinced that all Americans are gum and tobacco-chewing monstrosities. In the end, however, all uncomplimentary opinions were abandoned, the engagement was sanctioned, and the two rival shoe factories were merged.



Front Row (seated) — LaVelle Lease, Louise Walkup, Hilda Jeane Womer, Lenora Norfleet.  
 Second Row (seated)—Beryl Smith, Virginia Torell, Harold Burhoop.  
 Third Row—Maxine Fraser, Melba Manning, Miss Alma Tress Lundman, Director; Everett Green, Victor Robbins, Jerome Fuller, Max Riggs, Ruth Colman, Irene Hofgard, Mildred Thompson, Geraldine Johnson.

THREE PLAYS

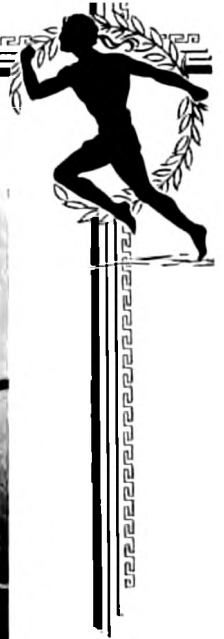
TWO AUNTS AND A PHOTO  
 CAST  
 Jessie Willsins.....*Irene Hofgard*  
 Emily Day.....*Geraldine Johnson*  
 Mehitable Willsins.....*Ruth Colman*  
 Sophie Smith.....*Mildred Thompson*

IN THE FIRE'S SHADOW  
 Cast  
 Earl Fisher.....*Harold Burhoop*  
 Will Power.....*Max Riggs*  
 Charles Goodyear, Apparition.....*Jerome Fuller*  
 Robert Louis Stevenson, Apparition.....*Everett Green*  
 Ulysses S. Grant, Apparition.....*Victor Robbins*

CAPTAIN JOE

Cast  
 Josephine Scott ("Captain Joe").....*Beryl Smith*  
 Mildred Linn, her roommate.....*Virginia Torell*  
 Kate Winston, second team forward.....*LaVelle Lease*  
 Pat Dickinson, class president.....*Lenora Norfleet*  
 Sue Carpenter, unathletic student.....*Maxine Fraser*  
 June Powell, the little Freshman.....*Melba Manning*  
 Two Team Girls.....*Hilda Jeane Womer and Louise Walkup*  
 Cheer Leader Off Stage.....*Hilda Jeane Womer*

As its second major project of the 1933-1934 season, the Histrionic Club presented a series of three plays in the College Auditorium on the evening of December 15. The first play was "Two Aunts and a Photo," a one-act comedy by Maisie B. Whiting. A one-act allegory by Norman Balch entitled "In the Fire's Shadow" was the second offering, while a two-act comedy-drama, "Captain Joe" by Alice Gerstenberg, concluded the evening's entertainment. On January 17 these same plays were presented in Utica at the invitation of the Utica High School.



Front Row—Miss Eda Rankin (organist); Miss Anna Thompson; Edna Coufal; Genevieve Hammar; Miss Emma Fye; Irene Hofgard; Dean Charles Amadon (director); Mrs. Charles Amadon; Evelyn McKain; Mrs. Theodore Thompson; Mrs. R. E. Caldwell; Lila Elam.

Second Row—Edith Lawson; Ella Larsen; Mrs. Evangeline Steen; Geraldine Johnson; Belva Blakeley Tack; Jean Brown; Viola Wimmer; Dorothy Miracle; Vera Thamer; Melba Manning; LaVelle Lease; Ethel Daniels.

Third Row—Raymond Wochner; Melvin Tack; Jane Caldwell; Enolia Bond; Veryl Burch; Iva Harritt; Lorna Stouffer; Doris Jenkins; Frances Cockle; Evelyn Dixon; John Boren; Ormal Tack.

Fourth Row—Max Riggs; Arthur Amadon; Floyd Merchant; Ray Hill; Ben Wall; Henry Franz; Mark Carter; Virgil Walker; Ralph Sittler; Dale Adams; R. E. Caldwell.

Fifth Row—Howard Caldwell; Sam Lee; Carroll Myers; Paul Myers; Jack Graham; Chester Freet; Kenneth Jenkins; Flint Campbell; Ralph Jordan; Donald Hitchcock; Nelson Ronne, Russell Smith.

## United Brethren Church Choir

With the founding of York College, it was naturally inevitable that that institution and the local United Brethren church would be mutually advantageous to each other. Both faculty members and students have given unstintingly of their time and talents in order that the York United Brethren church choir might be an outstanding musical organization.

The choir of the school year of 1933-1934 was, as it has been for the past number of years, under the efficient direction of Dean Charles Amadon. Aably assisting him as organist was Miss Eda Rankin, also of Hulitt Conservatory. After taking several weeks to organize the choir following the opening of college, Dean Amadon had that body and some of its members present for the regular services of the church many of the finest sacred compositions written. The next project undertaken was the presentation of several musical vesper services which were well attended.

Then in December the choir presented an afternoon concert which consisted of the best known arias, recitatives and choruses of Handel's great oratorio, "The Messiah." On Palm Sunday afternoon, the choir presented Maunder's beloved "Olivet to Calvary." Because of the nature of these two major performances as well as the less pretentious concerts, those persons who were members of the 1933-1934 choir derived a great amount of personal benefit and enjoyment from their work while those who heard one or all of the choir's concerts were spiritually uplifted and made better individuals.





THE REVELERS

Arthur Amadon, Frank Green, William Hice  
(Accompanist), Marvin Hersey, Kenneth  
Jenkins.



THE SERENADERS

Rodney Whittemore, Henry Franz, Evelyn  
McKain (Accompanist), Raymond Wochner,  
Floyd Merchant.

## The Quartettes

Each spring York College has desired to have some group represent its interests before the high schools of Nebraska and Kansas. Since the music department is such a dominant factor in the life of the college, it was decided that male quartettes could best do the work. Up to 1933 only one quartette had been sent out each spring. In 1933, due to the fact that more schools requested programs than could be accommodated, the administration thought it best to employ the services of two groups.

The first of these groups was the Serenaders, composed of Rodney Whittemore, Henry Franz, Raymond Wochner, and Floyd Merchant, all of the class of 1934. The members of this quartette had sung together since they had been freshmen. By hours of constant practice they had developed into a group having a well-rounded repertoire. They were especially well known for their a capella singing and their rendition of sacred numbers. Assisting them as accompanist was Evelyn McKain.

The other quartette, consisting of Marvin Hersey, Frank Green, Kenneth Jenkins, and Arthur Amadon, was the Revelers. Although 1933 marked the first time they had sung together, all were well prepared to do quartette work because each had had private instruction in addition to having sung in other small vocal ensembles. After weeks of intensive practice this group had mastered a repertoire that included especially clever and brilliant novelty selections. Acting as accompanist and reader on their programs was William Hice.

After having presented programs in York and vicinity, both quartettes left for a week's tour of high schools, presenting an average of six programs a day. The Serenaders presented programs in Nebraska, while the Revelers appeared in both Nebraska and Kansas.

# FEATURES



---

## May Fete



EVELYN McKAIN

The annual all-college May fete, sponsored jointly by the Y. M. C. A. and Y. W. C. A., was held on May 18 on the college campus. At this time Evelyn McKain was crowned May Queen. A special program of dramatics and music was presented.

The May Queen is chosen by a vote of the student body. She is honored for her activity in Y. W. C. A. and also for popularity.

Each class selects from its number one girl to serve as attendant to the queen. Another attendant from each class is chosen by the May Queen herself. Those who were so honored this year were:

### Seniors

MARIAN HILL  
HELENE PRICE

### Juniors

LILA ELAM  
LUCILLE WESTWOOD

### Sophomores

ELLA LARSEN  
MELBA MANNING

### Freshmen

JANE CALDWELL  
GERALDINE JOHNSON

### Business College

EVELYN BITTINGER  
MARJORIE WHELAN



JACK GRAHAM

Representative Football Man

Elected by the 1933 football squad as a concrete expression of pluck, loyalty, and fair play.



**LILA ELAM**

Panther Sweetheart

Elected by the 193. 3 football squad as a concrete expression of personal charm and college spirit.



HENRY FRANZ  
Representative Man

Elected by the student body on the basis of character, scholarship, and leadership.



MARIAN HILL

Representative Woman,

Elected by the student body on the basis of character, scholarship, and leadership.



■  
King  
Winter  
■



- 1. At work
- 2. Old Main
- 3. Through these portals

- 4. Solitary beauty
- 5. Snowbound





■  
He-Men  
■



- 1. Nature in the raw
- 2. The big and little of it
- 3. Can he play it?
- 4. Innocents abroad

- 5. Unkissed
- 6. Tarzan
- 7. Why?

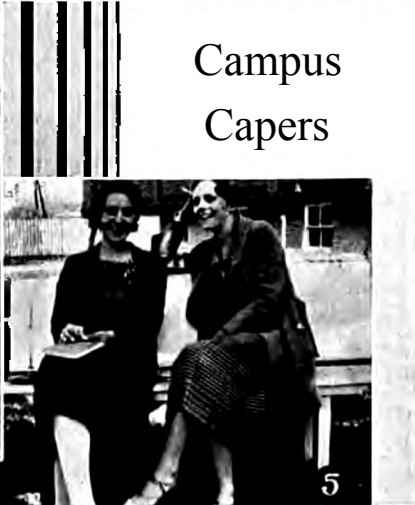


Here  
and  
There



1. Big *bizz*  
1. Back talk  
3. You guess

4. Picnicers  
5. Muscatine orator  
6. Dates



Campus  
Capers



- 1. Can she take it?
- 2. Name it
- 3. Maybe it's music
- 4. Hold it!

- 5. Sitting pretty
- 6. Strong man
- 7. Come on, Freshies



1



2



3



4

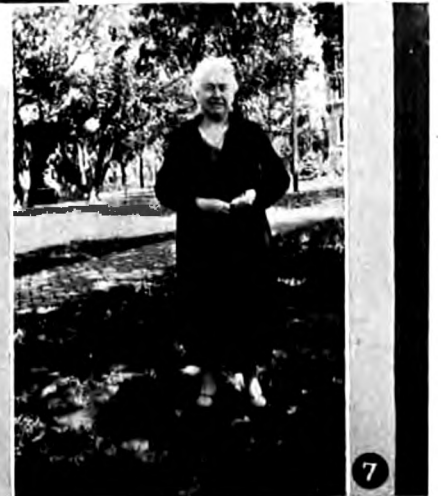


5

## Necessities



6



7

1. It's a joke
2. Class of '32
3. Spats
4. The Learned

5. Oklahomans
6. Freshman squad
7. Nature study time



## May Day



1. Bessie, our queen
2. May pole dance
3. Three little maids

4. The throne
5. The queen and her attendants
6. The procession
7. The dancers



# Seens

---

College students laugh and are laughed at. Each day presents its humorous situation. Each day someone must play the part of a fool. Thus life receives its savor and we are taught to live.



Out of respect to the girls of the dormitory an amazing close-up of a 'fire-escape walker' has been omitted from this space.

IN FRONT OF THEATRE.

Johnson: "One adult, please. "  
Hawley: "And one for a little boy. "



AN INTIMATE GLIMPSE OF THE TRIUMVIRATE.



AFTER EXAMS!!



A RURAL NEIGHBOR PAYS DAUGHTER'S TUITION.



Imajon

FEEMSTER LEAVES THE 'CON.'



CONSERVATORY ECHOES.

# As We Go Along

## SEPTEMBER:

- 1-11. Period of breathless suspense for faculty; anticipation for freshmen. No feeling recorded for upperclassmen.
12. Art Amadon freezes "Deep River." Dr. Hough breaks the ice and gets things going.
13. Begins to look like a tough year—*four deans instead of one!*
15. "Jolly-Up" at Gym. Annual affair. Upperclassmen and freshmen meet on common terms for the last time.
17. Evelyn Dixon suddenly is aware that this year she will have to study chemistry.
19. Y. M. C. A., and Y. W. C. A., hold first meetings of new year.
20. Who can eat the most watermelon? "I can," says Coach Ordway, and proves it!
22. The Panthers get into action with a 20-7 win over Hebron.
25. PALS give big reception for new students and faculty. Main attraction is eats. First square meal the faculty has had since last year.
26. Zetas ditto PALS' performance.
27. Dr. Ziegler visits campus. Freshmen write essays on "Why College?" Their lack of understanding is outstanding.
30. Red May dashes madly down corridor sans clothing in South Dakota hotel. Fire drill? York 0—South Dakota 19.

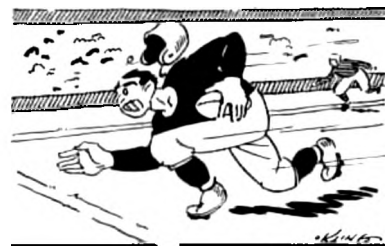


## OCTOBER:

6. Game at Hastings. 6 to 6. (Tie-game.) Lucille works her magic charm and from that night on "Steve" is hers.
10. New Zeta members ride the goat. Poor goat!
13. "Y" Club picnic. Take a date or the spats? That is the question.
20. Faculty enjoys *quiet* picnic! Whittemore must have been out of town.
21. York plays Doane, 6-6. Getting to be a habit. How come several cars of football boys stopped in Dorchester on the way back? Perhaps the editor can answer that!
27. Busy day. The Panthers score 25 points while Moline and Graham assist Central in making 6 points. The freshmen hold party of which Whittemore hears. The Rev. J. Gordon Howard pays visit to campus.
30. Annual Junior-Senior spook party. Graham makes three point landing. Jim (James to Marian) Speece learns how to play leap-frog. Some eccentric freshmen take a moonlight stroll of several miles each.

## NOVEMBER:

4. Panthers battle to long end of 12-6 score in bone-crushing battle with Dana.
10. Histrionic club presents "So This Is London." Those, who before couldn't imagine "Bill" Hice as a football player, still maintain their doubts. Joking aside—a commendable presentation.
11. Homecoming. Freshmen nose out the upper classmen as usual by score of 6-0. Midland defeats York 19-6 in main event. "Miracle" Moore makes record-breaking dash of 62 yards for York's counter.
13. John Dougherty, Attorney, gives Armistice Day address at chapel period.
14. C. D. Hayes, Y. M. C. A., field secretary, visits campus.
17. York loses to Wesleyan 6-20 in hard fought game. Jim Speece and Russell Smith ride fenders of Rod's car all the way home!! "Smitty" not thawed out yet.
19. Voice department loses several members. Records made of a number of voices and mortification sets in at once. Dean Amadon is surprised to hear himself direct a choir.
24. Services of trustworthy Bob Moline required to wrest 7-0 victory from Concordia Teachers.
27. Battle of the Co-eds. Victory to the frosh! 3 5-22.





29. Freshmen permitted to go home to see their mothers.  
Good old vacation to the upperclassmen.
30. York takes turkey to McPherson, 27-7.

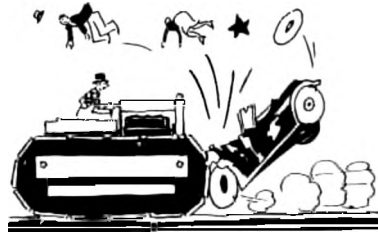


DECEMBER:

5. The Y. W. presents the Y. M. Program and the Y. M. presides at the Y. W. program. Each tells the other what they should do to be ideal. Underlying motive: Scheme of Y. M. members to have the floor at a women's meeting.
  6. Miss Evelyn McKain is presented in graduate voice recital assisted by Miss Marian Hill.
  8. Football banquet honors Miss Lila Elam as Panther Sweetheart and Mr. Jack Graham as Football Representative. Many secrets of football season disclosed! Prof. Hill's table creates greatest disturbance.
  9. Steve's Ford loses thrilling contest with several tons of tractor. Our sympathies to Steve and Lucille in their misfortune and our praise for their courage.
- 11-12. The Rev. and Mrs. Harlan Thomas hold interesting meetings featuring reports of their work in Africa.

16. Lid pried off basketball season with 35 to 30 victory over Concordia.

20-Jan. 3. Vacation! Whoopee!! —and sox for father.



JANUARY:

3. Heat turned on in the "Con. " Vernie and "Smitty" are back.
8. Charles E. Lofgren gives illustrated lecture on first Byrd Expedition to the South Pole. Maurer elected to head 1934 Panther gridmen. Here's success to you, Mitz, and to your loyal team-mates.
11. Dr. King brings consolation to those suffering from mental disorders. It seems the only truly happy persons are those on the inside.
12. The Panthers take second game from Concordia, 47-23.
14. Panther Club organizes band.
15. Hastings noses out York, 34-31.
17. Histrionic club gives three short plays for Utica audience. Colman and Neff — local girls who make good.
18. York adds to credit side with 33-15 win over Nebraska Central.
19. Bruce Freet is permitted to wear shorts and a large, red tie and otherwise act natural at Sophomore Reception.
20. Old Sol fails to daunt spirits of Jerry and Dave at Y. M., Y. W., skating party and picnic. Everything but spirits gets slightly damp.
24. More semester exams!!
26. Still more exams!!! York 14—Nebraska B 29. Bang! —Semester ends!
29. Second lap of scholastic journey started. The Rev. Alfred Crouch addresses chapel at initial ceremony.
30. Prof. Baller decides to decrease size of classes. Takes them on supposed tour of State Hospital for Insane. Comes back with entire group. Other colleges had been there first.

FEBRUARY:

1. Campus blossoms with industry. F. E. R. A. in effect. No excuse for loafing.
2. Bad news. York 16—Doane 35.
8. The United States has recognized Russia and today York College recognizes its Seniors.
9. "Jerry" Johnson continues to be the center of attraction. Gets nucleus position in group picture on front page of today's SANDBURR. York 30—Wesleyan 45.
12. Lots of news today. York beats Central 22-17. (That's news! ) "Bud" Franz is first of class of '34 to secure teaching position. Evelyn McKain brings in the second contract. (More news! )
13. York loses to Hebron 35-25. Moral: Never play basket ball on the thirteenth.
16. Dana squeezes ahead 50-41. Moral: Never play basket-ball—!
23. Hastings doubles up the score 49-24. Moral: Never play-
27. Midland maintains their stride with 41-21 victory. Moral: Never—!



## MARCH:

2. Y. W. C. A. enjoys (?) stag banquet at church.
3. York 20—Doane 47. And that, ladies and gentlemen, is all the basketball scores we have for you.
5. Negative debate team wins from Nebraska Central.
6. Affirmative debate team loses to Nebraska Central. (A negative seems to be stronger than a positive.)
7. "Y" Club initiates six new members. Guest list limited.
8. Forensic and Oratorical contestants go to Hastings for three-day meet. Final survey places Billy Thomas in third position of conference scoring column.
9. Prof. Doty gives famous lecture concerning physical attitudes in the classroom. (By the way, Professor, your name is on a desk in the room back of the chapel and also there is a picture of someone by it!)
12. Dean C. E. Ashcraft speaks in Chapel. Spring football begins.
13. After the fatal warning regarding the thirteenth, the York College Board of Directors decides to meet today. Can't do much now—
15. Seniors present chapel program. What? Bud Franz has washed his feet? Professors all very cross.
22. Miss Marion Hill gives Senior Dramatic Recital.
30. Spring vacation begins—see you next Wednesday.



## APRIL:

6. The Serenaders and The Varsity Revelers return from spring tour.
12. Histrionic club presents three act comedy-drama "He and She," at high school auditorium. Friday the thirteenth!
14. Hastings relays. Smith also ran.
17. The Booster Band, which has grown materially, journeys to Benedict tonight.



(From this date, kind reader, the events herein recorded are promises of what is to happen. If they fail to happen, please do not criticize the staff.)

19. Miss Slee is getting great bags of mail these days. Students are accepting the invitation of the York College Faculty to its annual reception tonight.
26. Dual track meet with Hastings, there.
28. Nearby high schools attend invitation track, music, and commercial meet here.

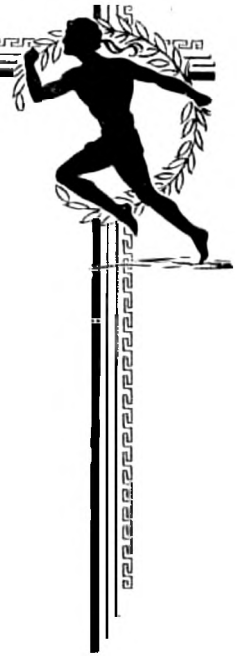
## MAY:

2. Mr. William Hice is presented in voice recital.
3. Juniors entertain seniors at annual banquet.
4. Triangular meet at Doane. Doane, Wesleyan, and York
10. "Y" Club and W. A. A. Carnival.
18. Y. M., and Y. W., present annual May Day fete.
20. Christian Associations hold Anniversary Program. The Rev. Andrew Sweet, '19, speaker.
24. Art exhibit.
27. Baccalaureate Service. Tentative arrangement is that President D. O. Kime of Western Union College is to be the speaker.
28. Senior Class Day. The usual jokes, etc. Literary Society Banquet and Anniversary Program.
29. Alumni Chapel and Banquet. (Alumni get together and talk about "When I was in College—") Field day. Conservatory of Music presents "The Mikado" under the direction of Dean Charles Amadon.
30. Commencement program. G. W. Rosenloff, speaker. That's all but the results from the examinations.



# ATHLETICS





COACH GUY ORDWAY

Guy Ordway became head coach at York College in the fall of 1933. In a very short time he whipped into shape a football team that gave a brilliant account of itself. It met such schools as the University of South Dakota and was the only team in the conference that outplayed the N. C. A. C. champions.

With but two veterans, Coach Ordway built a basketball team that played the game as it ought to be played regardless of wins and losses. Most of the members of this basketball team will be working together for three more years and this fact should be a decided opportunity for any coach.

Coach Ordway is respected not only as a coach, but also as a Christian leader of men. Because he teaches his athletes to play the game squarely, his teams are worthy of the highest rating in sportsmanship. York College is both proud and fortunate in being able to have him return for another year.



MILTON MAURER

Fullback

"Mitz", who will captain the 1934 Panther squad, was the hardest tackler and best blocker on the team. His defensive play in backing up the line was always outstanding.

ROBERT MOLINE (Co-Captain) Halfback

"Bob", a four year letterman, was undoubtedly the best punter in the Conference. His passing and plunging also made him a constant threat for all opponents. "Bob" will be greatly missed when Coach Ordway lines up his team in '34.

WILLIAM THOMAS

Halfback

"Bill" displayed an unusual brand of football for a freshman. He was a triple threat man who should be a valuable asset to the Panthers for three more seasons.

WAYNE NORWOOD

Quarterback

Wayne was one of the finest quarters of the Conference in his first year for York College. His long bullet passes were a constant threat to every opponent. Besides being able to pass fifty yards, he could kick and lug the pigskin.

JACK GRAHAM

Halfback

Jack was a scrappy little midget who could out-smart the best of his opponents. He has another season to display his flashy and highly\* effective brand of football.



DAVID ENDER

Guard

In his three years "Dave" has developed from a reserve player to All-Conference caliber. His consistent smashing tactics made him an asset to his Panther teammates. With another season to play "Dave" should cause some other teams a year of real worry.

TENNIS HOFFMAN (Co-Captain) Tackle

Tennis was a big, aggressive lineman whose consistent playing for four years won for him a position on the 1933 N. C. A. C. All-Conference team. He will be greatly missed next year.

RUSSEL LEWIS (Co-Captain)

Tackle

Lewis was an aggressive, husky, four-year letterman who rated among the All-Conference selections for three consecutive years. He has played his thirty-third and last game of football for York College.

LEROY AYERS

End

"Colonel" was a valuable pass-snatching end. He was a hard man to get around and will be greatly missed next year. This was his first year for York College.

ARTHUR AMADON

Center

Although the center position was new to "Art" he played like a veteran. His defensive work against the University of South Dakota was outstanding. He should rate with the best of them with still another season to play.





**VIRGIL WALKER**

Guard

Virgil, a "watch charm" guard who played his first year for the Panthers, could hold his own with the big fellows. With three seasons ahead of him he should spell disaster for many opponents.

**LYNDLE MOORE**

End

"Ham" was known as the utility man. He played halfback and guard equally as well as end. The "Miracle Man" performed his duty in the Midland game when he stole the ball and ran sixty-two yards for a touchdown.

**CALVIN FEEMSTER**

Guard

"Cal" was fast enough to lead the offense and yet rugged enough to stop everything that came his way on defense. His defensive work was unusually good in the Doane game.

**CECIL SMITH**

End

"Smitty" was a fast, rangy end who had his first taste of football this year. With three years' competition ahead of him, he should develop into a valuable Panther end.

**FLOYD MERCHANT**

Halfback

Floyd was a small, scrappy back. He had been defeated two previous seasons by the injury jinx but he had the spirit to try again. He was a good ball lugger and a hard tackler.



MELVIN TACK

Guard

Tack, a senior, was a fast, scrappy guard who could hold down his position against a great weight advantage. "Mel" played for Kansas Wesleyan previous to coming to York College.

HOWARD MAY

Tackle

"Red" was a big, hard-tackling lineman who could step into either tackle position and play it like a veteran. He should be a valuable asset to Coach Ordway next year.

WALTER SPEECE

Center

"Walt" was a utility man who could use his two hundred pounds to a great advantage in the line either at center, guard or tackle position. Illness in midseason was a handicap. He has another year to play for York College.

WILLARD WALKER

End

Walker developed into an aggressive and consistent end. In the Wesleyan game he blocked a punt which paved the way for York's counter. He has two more years to battle with the Panther squad.

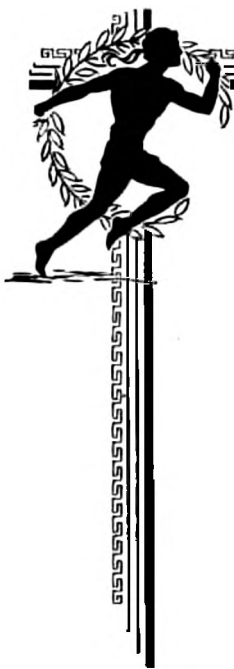
EVERETT GREEN

Student Manager

"Elevator" carried out his duties very efficiently. He was always on the job, ready to lend a hand to any grid man in distress.







*Front Row*—Robert Moline (Co-Capt. ), Arthur Amadon, David Ender, Walter Speece, Floyd Merchant.

*Second Row*—Jack Graham, LeRoy Ayers, Russell Lewis (Co-Capt. ), Lyndle Moore, Howard May, Melvin Tack, Willard Walker.

*Third Row*—Everett Green (Student Mgr. ), Cecil Smith, William Thomas, Milton Maurer, Calvin Feemster, Ralph Jordan, Virgil Walker, Warren Witham, Coach Guy Ordway.

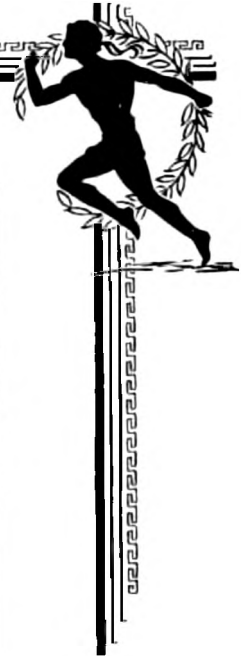
## Football

With a powerful grid machine the Panthers waded through a tough ten-game schedule with four victories, four losses and two ties. Russel Lewis, Robert Moline, and Tennis Hoffman, all four-year lettermen, were elected co-captains for the season.

Under the leadership of Lewis the Panthers easily defeated Hebron 20-7. Although losing 19-0, the York team, with Moline as captain, gave a very brilliant account of themselves against the strong University of South Dakota team. Hoffman led the boys in their best game of the season when they tied Hastings, the N. C. A. C. champions. Doane also managed to slip out with a 6-6 tie. The reserves helped to wallop Nebraska Central 25-6. York trimmed Dana 12-6. Several veterans out of the line-up proved disastrous for the Panther defense in the Midland game when they lost 19-6. The Panthers pierced Nebraska Wesleyan's line at will for three quarters and then, against a wealth of reserve material, dropped their 6-0 lead to lose 20-6. The reserves again aided in the 7-0 win at Seward against Concordia Teachers College. On Thanksgiving Day the York men emerged from their Kansas tilt on the short end of a 27-7 score against the strong McPherson aggregation.



York .....	20	Hebron .....	7
York .....	0	So. Dak. U. ....	19
York .....	6	Hastings .....	6
York .....	6	Doane .....	6
York .....	25	Neb. Central ..	6
York .....	12	Dana .....	6
York .....	6	Midland .....	19
York .....	6	Wesleyan .....	20
York .....	7	Concordia .....	0
York .....	7	McPherson .....	27



*Front Row*—Henry Fran?, Dale Adams, Robert Moline (Captain), William Thomas, Jack Graham.

*Second Row*—Edward Schoenthal, James Speece, Walter Speece, Everett Green, Harold Riggs, Coach Guy Ordway.

## Basketball

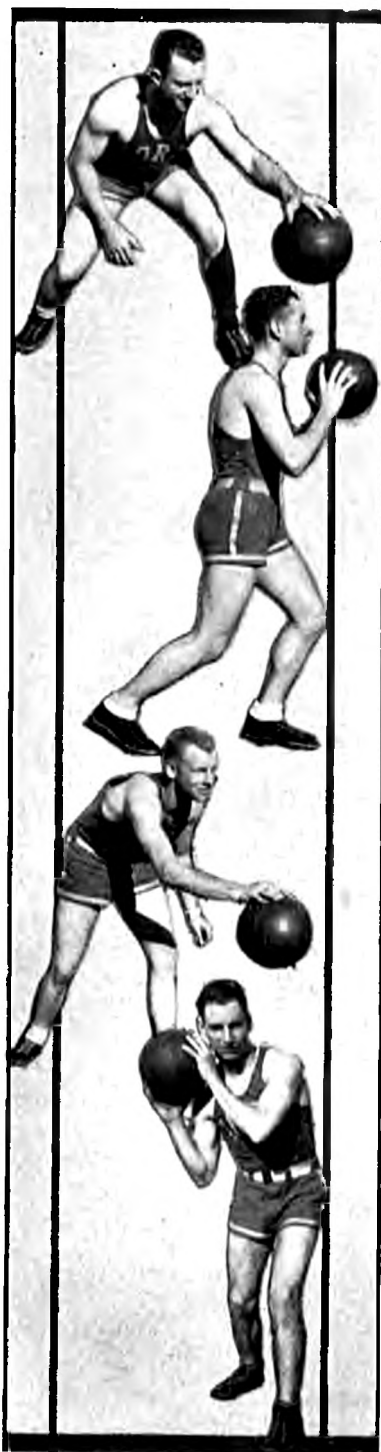
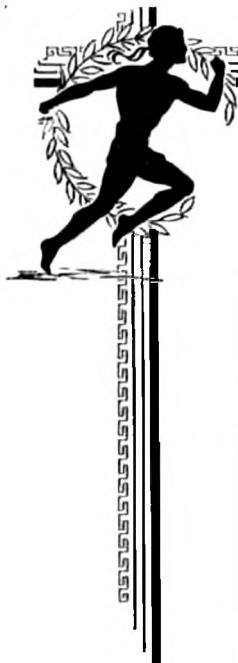
The 1934 basketball team turned out by Coach Ordway was an inexperienced group that performed brilliantly at times and compiled a record of four victories out of a sixteen-game schedule.

With but two veterans and a score of new men, Coach Ordway developed a team that gave all it had, even though its victories were few in number. A team was built that will be playing together for two more years, and in that time should develop into a winner.

Interest in basketball was not confined to the varsity squad altogether, as the active second team did much to stimulate interest in the sport. It won every game of its schedule with the exception of the last one. The men who represented the reserve team were: Harold Riggs, Max Riggs, Melvin Thompson, Leonard Thompson, Russel Lewis, Kenneth Liedtke, Ralph Sittler, Virgil Walker, Cecil Smith, Calvin Feemster, James Speece, Fred Rasp, and Olin Hicks.

York .....	35	Concordia .....	30
York .....	13	Neb. Wesleyan	34
York .....	31	Hastings .....	34
York .....	33	Neb. Central ..	15
York .....	47	Concordia .....	23
York .....	20	Midland .....	46
York .....	16	Doane .....	35
York .....	22	Neb. Central ..	17
York .....	30	Neb. Wesleyan	45
York .....	24	Hastings .....	49
York .....	21	Midland .....	41
York .....	20	Doane .....	47





ROBERT MOLINE (Captain)

Guard

"Bob" was one of the best defensive men in the conference. His ability to play either center or guard made him a valuable asset to his teammates. "Bob" led the boys as captain in his fourth year of basketball.

WILLIAM THOMAS

Forward

"Bill" ranked with the best of the tossers this year. He placed third in the individual scoring column of the N. C. A. C. Although he is a freshman he gave a brilliant account of himself and will be back for three more years.

HENRY FRANZ

Guard

"Bud," a two-year letterman, always played the game as though he liked it. His aggressiveness and consistent playing will be missed next year because he, too, will graduate.

JACK GRAHAM

Forward

Jack was a fast little man who always helped considerably in piling up the tallies. Although he had a size handicap, Jack made up for it in speed. He has one more year to play.



DALE ADAMS

Forward

Adams, a freshman who will have three more years to exhibit his skill on the court, was a consistent player at either a forward or guard position. His floor work was outstanding.

WALTER SPEECE

Guard

"Walt" was a big man who played at either a guard or center position. His size was a decided advantage in his defensive playing. He has still another year to play for the Blue and White.

EDWARD SCHOENTHAL

Center

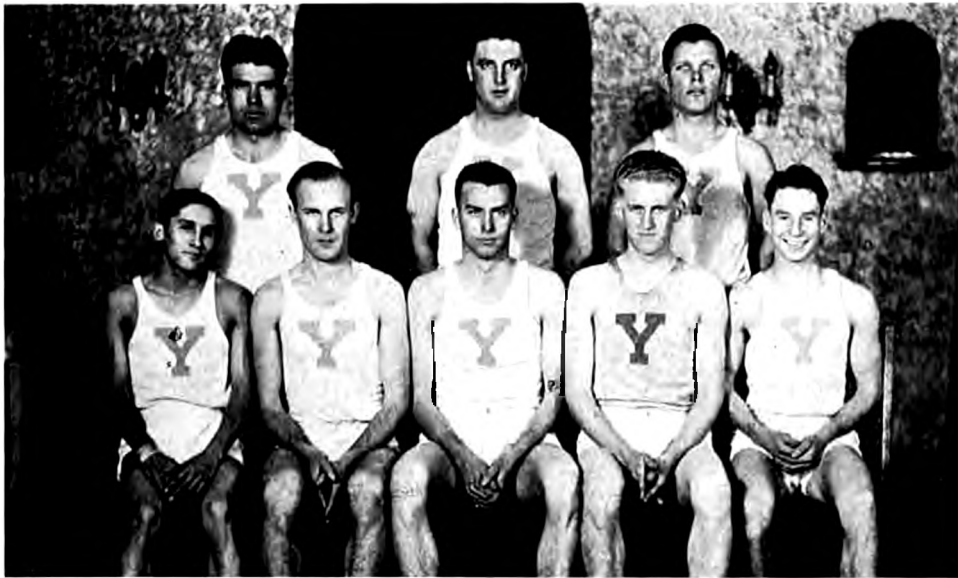
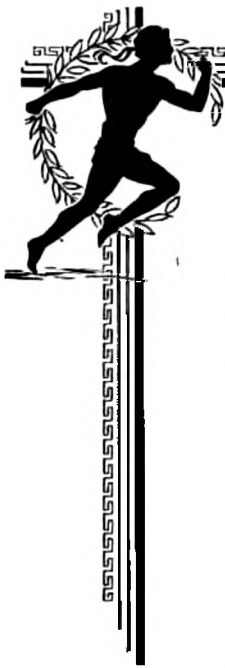
"Ed" is another freshman who gave a worthy account of himself during his first year at York College. He is a tall, rangy fellow, which fact added to his ability in both defensive and offensive work under the basket.

EVERETT GREEN

Center

"Elevator," getting his first taste of intercollegiate athletics, proved to be a valuable man to Coach Ordway's squad. With two more years to play, Green should develop into a valuable man.





*Front Row*—Bernabe Herrera, James Speece, Cecil Smith, Melvin Thompson (Captain), Jack Graham.

*Second Row*—Lyndle Moore, Wayne Norwood, David Ender.

## Track

The 1933 track team won the two meets in which it participated. Melvin Thompson captained the cinder artists in their victories.

In a triangular meet with Nebraska Wesleyan and Cotner at Lincoln, York took the lead with a total of 67 points. Cotner scored 55 tallies, while Wesleyan trailed with but 41. Captain Thompson won first place in the half and quarter mile races while Bernabe Herrera duplicated Thompson's feat in the mile and two mile distance runs. Maurice Brookhart leaped highest to win the high jump while Wayne Norwood tossed the javelin to win another first for York. Cecil Smith tied for first in the broad jump. Other points were scored by these same men as well as by James Speece, Jack Graham, and Lyndle Moore. After the triangular meet at Lincoln, York journeyed to Nebraska Central to defeat the Quakers overwhelmingly in a dual meet.

During the 1934 season the Panthers met Hastings in a dual meet at Hastings, and Doane and Wesleyan in a triangular meet at Crete. They also participated in the Hastings Relays and the conference meet.



The lettermen for the 1933 season were: Melvin Thompson, Bernabe Herrera, Cecil Smith, Jack Graham, Maurice Brookhart, Lyndle Moore, David Ender, Wayne Norwood, and James Speece.



Front Row—Wayne Norwood, David Ender, Melvin Thompson, Vicente Colon, Jack Graham.  
 Second Row—Lyndle Moore, Robert Moline, Willard Walker, Marvin Hersey.

## Baseball

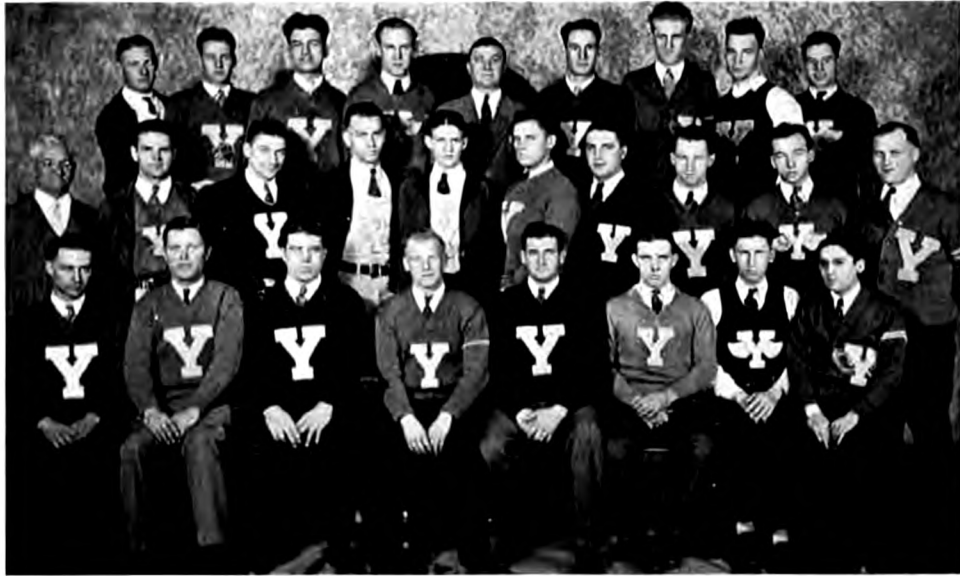
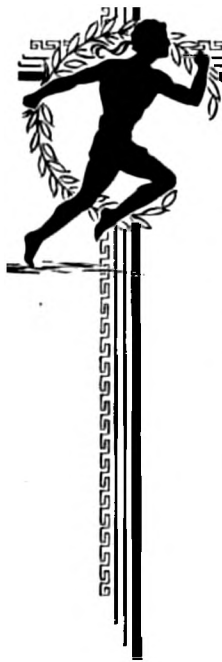
The York College Panthers had their first taste of baseball in several years when they won three games on their six game schedule in the spring of 1933. It was also the first time in years that York College had met the University of Nebraska in athletic competition.

The Panthers took a 12-7 defeat in the first game of the season, with Thompson and Norwood as batteries. The Quakers from Nebraska Central College came to York for the second game. Moline, Hersey and Thompson shared the hurling honors in the 13-1 win. Hersey pitched the 4-0 loss to the University of Nebraska team as well as the 13-11 win at Nebraska Central College. York next lost a close game to the University of Nebraska team and then finished the season by winning from the Concordia Teachers by a 9-8 score.

Lettermen for the season were: Melvin Thompson, Wayne Norwood, Marvin Hersey, Robert Moline, Jack Graham, Cecil Franz, Herbert Burnham, David Ender, Vicente Colon.

York .....	7	Concordia .....	12
York .....	13	Neb. Central.....	1
York .....	0	Univ. of Neb.....	4
York .....	13	Neb. Central.....	11
York .....	8	Univ. of Neb.....	12
York .....	9	Concordia .....	8





*Front Row*—Floyd Merchant, David Ender, Lyndle Moore, Henry Franz, Melvin Tack, Virgil Walker, Virgil Fooshee, Bernabe Herrera.

*Second Row*—Dean Charles Bisset, Calvin Feemster, Arthur Amadon, Cecil Smith, Everett Green, Walter Speece, Wayne Norwood, Robert Moline, William Thomas, Russel Lewis.

*Third Row*—Milton Maurer, Robert Graham, Tennis Hoffman, James Speece, Coach Guy Ordway, Willard Walker, Melvin Thompson, Howard May, Jack Graham.

## “Y” Club

The purpose of the “Y” Club is to stimulate interest in athletics and to have an organized fellowship for those interested in York College athletics.

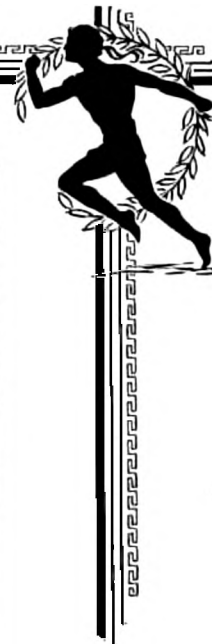
The membership of the club is limited to those men who have earned the official “Y” in at least one of the intercollegiate sports. Any man, upon being awarded the official “Y,” is entitled to a small silver medal which also serves as a life pass to York College athletic events. Only those who are actually in college are considered active members although membership in the club is for life. The honorary members of the club are: Dean Charles Bisset, Rev. Paul Porter, Prof. Warren Baller, and Coach Guy Ordway.

The club has regular monthly fellowship dinners when most of the business and athletic plans are discussed. For several years the “Y” Club has helped to sponsor the district high school basketball tournament. This spring the club sponsored their fourth annual high school invitation track and field meet.

Dale Adams and Edward Schoenthal are new members who have been initiated since the picture was taken.



There will be other new members after the spring baseball, track, and tennis season ends. The regular spring initiation will be held on “Y” Club Day, May 23 and 24.



*Front Row*—Mrs. Guy Ordway (Sponsor), Leta Yost, Jean Brown (Secretary-Treas. ), Ruth Spore (President), Alma Walker, Marian Hill, Lucile Evans.  
*Second Row*—Margaret Akofer, Melba Manning, Neva Fellman, Geraldine Johnson, Irene Thompson, Lucille Westwood, Allegra Byrnes.  
*Third Row*—Hilda Jean Womer, Florence Belle Waggoner, Leta Shaw, Elizabeth Feemster, Lila Elam, Irene Hofgard.

## W. A. A.

The purpose of the Women's Athletic Association is to stimulate interest in women's athletics and to provide opportunity for women to develop the physical side of their lives.

Basketball, baseball, volleyball, and tennis are the main activities but credit is also given for participation in other sports and forms of recreation. Points are granted on a settled basis and the awards for such points are: 100 points, letter; 500 points, pin; 1000 points, sweater; and 1500 points, blanket.

This year the W. A. A. has tried to stimulate campus enthusiasm for all inter-collegiate athletic events by organising a pep club. This pep club has been the nucleus in maintaining the student morale for the various athletic contests.

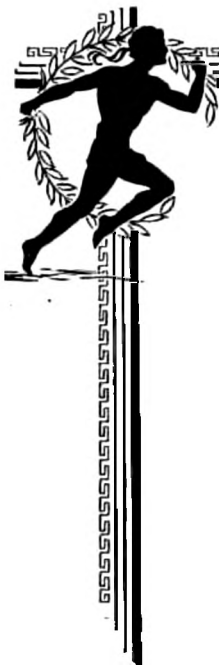
Mrs. Guy Ordway readily joined the group in their activities and served as their sponsor. The officers for the year were: President, Ruth Spore; Secretary-treasurer, Jean Brown; and Student Council Representative, Alma Walker. The chairmen of committees for the year were: Basketball, Marian Hill; Baseball, Lucille Westwood; Tennis, Melba Manning; Hiking, Irene Thompson; Winter Sports, Lucile Evans; and Social, Leta Yost.

All of the members heartily join in cheering

“Yeah, blue!  
Yeah, white!  
Yeah, team!  
Fight, Fight!”







## Intramural Sports

Each year the Student Council arranges three athletic events between the freshmen and upperclassmen to determine whether or not the former shall have to wear their green tams until the Christmas vacation.

In the first event the freshman girls' basketball team, captained by Geraldine Johnson, won their court tilt by a score of 35-28. They appeared a bit over-confident and trailed the losing team led by Ruth Spore until the last minutes of the game. Event number two found the upperclassmen easily winning the tug-of-war by a 3-0 count. The freshmen couldn't get a good footing. The third event, being the annual freshmen-upperclassmen grid contest, gave the freshmen the privilege of discarding their tarns at Thanksgiving time when they defeated the older men by a 6-0 score. The game was close throughout with the brilliant running attack of the newcomers finally netting them six points. Wallander, Adams, Lewis, and Taylor looked best for the freshmen, while Thompson, Franz, and Freet carried the burden for the losers.

The juniors took the interclass basketball tournament by defeating the seniors and freshmen. The freshmen were in the finals after defeating the sophomores.

Cecil Smith, with 39 points, led the sophomore-senior track team to a victory over the freshman-junior team. Thompson was second high point man with 19 points, while Jack Graham and James Speece tied for honors with 18 tallies each.

The annual men's and women's tennis tournaments are being sponsored by the Y. M. C. A. and Y. W. C. A. respectively. The tournaments are well under way with both of last year's champions in the race. Calvin Feemster, defending his 1933 title, is alert and willing to play hard to be the 1934 champion. Howard Wright may give Calvin a good match. Ruth Spore with her usual vim, vigor, and vitality is making fine progress in an effort to succeed herself as the women's champion tennis player. She may find some difficulty in defeating two of the freshmen, Geraldine Johnson and Vera Thamer, who will be strong competitors.



**STUDENTS**

*Make this*

**Advertising Section**

*Your Trade Guide*



*Patronize*

**YORK'S BUSINESS MEN**

**CONGRATULATIONS**

**and Best Wishes**

**to the Class of 1934**

---

**MIDDLEBROOK'S**

**PHOTOGRAPHS**

**THAT PLEASE**

THAT  
MAN

1

**Gale**

**YORK**

**AURORA**

**EXPERT DEVELOPING AND  
PRINTING OF YOUR KODAK  
FILMS**

# SUCCESS

TO THE

## Class of 1934

---

Boost York College

---

### ED WOCHNER CASH COAL CO.

#### Diamonds Watches and Jewelry

---

Novelty rings, bracelets, and neckwear—  
Everything in the gift line. Inspect our  
stock for quality goods.

The place where prices are right

#### 0. J. SMYERS

York Theatre Bldg.

#### FAMOUS SAYINGS OF FAMOUS PEOPLE

Tennis Hoffman: "By Jacks! "

Melvin Thompson: "Is she good looking? "

"Dave" (Duck-a-day) Ender: "Have you  
paid your Y. M. C. A. pledge? "

Calvin Feemster: "Have you seen Jerry? "

Prof. Ray Hill: "Heard a story the other  
day. "

Ruth Colman: "-----" (Censored).

"Bob" Hawley: "You wouldn't guess I'm a  
preacher's son."

Henry ('Bud' to you) Franz: "Aw, nuts!"

#### HISTORY

Ancient:

McKain—Wochner

Elam—Maurer

Blakeley—Tack; King

Dixon—Professor Paul R. Frey

Johnson—Feemster; Varcoe; Caldwell

Modern:

McKain—Wochner

Elam—"You've got to be a football hero! "

Blakeley—King; Tack

Dixon—Paul

Johnson—Feemster; Varcoe; Caldwell;

Ender.

#### STEWART FURNITURE EXCHANGE

West Side of Square

# Russ Williams

Society Brand Suits for the  
well-dressed young man

## F. A. HANNIS

Jeweler and  
Optometrist

## Rothman & Sears

*"All Ways Reliable"*

KUPPENHEIMER CLOTHES

## Christine's Beaute Shoppe

CHRISTINE KLINE  
OVER CARTWRIGHT'S MUSIC STORE

Phone 9

## J. M. JOHNSON

ART STORE

Kodak Finishing, Typewriters,  
and School Supplies

Phone 27

Spend to Real Advantage  
for Yourself by Calling

## York Beaute Salon

Phone 160

We Appreciate Your Patronage

## CARTWRIGHT'S MUSIC HOUSE

Successor to Johnson Bros.

Radios and Electric  
Refrigerators

### BALLER-HOO

He was a BOND salesman in MOLINE. She was from CARSON City and made an honest living with her OLIVER typewriter. During his college days he played HOFGARD and was chosen All-American for his brilliant work. She got a job in his office and traded her OLIVER for a SMITH. That was in MAY. By the time the CALLENDER had been turned to the next MAY she had a LEASE on him and began to take on fine AYERS. To him she was his precious LAMB but to her he was merely the guy that paid the PRICE of her meal ticket and TAY-

A. A. Metz

Don R. Metz

## Metz Mortuary

## **Dennis Meehan Shoe Co.**

Phone 216

## **Needlecraft and Music Shop**

Shop of Gifts

Phone 1022

## **Fair Hat Shop**

Exclusive Millinery

Phone 481

## **W. C. Baer Furniture Co.**

Phone 770

## **Dr. B. O. Callahan**

Chiropractor and Complete X-Ray Laboratories

1st Nat'l Bank Bldg.

Phone 51

LOR bills, and she kept wanting MOORE. He had been KING hut now it seemed the GIAUQUE was on him.

Finally his business began going down HILL and at last he found himself with his back against the WALL without any JACK.

One night our hero gave a party and invited me to be WITHAM. I promised to WALKUP at nine. A strange sight met my eyes when I arrived. The room, instead of being lighted with electric lights was illuminated by a COLMAN lamp. There was hardly any furniture and our hero was standing by a CASEBEER drinking a STEEN. The room was heated with a BURCH log from the WESTWOOD, which BYRNES very well, No one said anything and he kept getting FULLER. At last he began to talk to his stenographer. He told her that he had lost all his money and that he had had to give JAMES the KARRE on his back salary and it would be necessary for him to WALKER home. She sat dumbfounded, WAGGONER head and muttering, 'For EVANS sake! " Then he turned to her and said, 'Everything will be all WRIGHT. A MIRACLE has happened. A MERCHANT has given me a job. We will get a little house

## **Mother's Day and Graduation Day Flowers**

**YORK FLORAL CO.**

When in York Visit York College  
and Also York's Leading Food Store

**PIGGLY WIGGLY**

<p>East Hill Grocery "The Students' Store" 934 East 9th St. Phone 88 N. HAMMER, Prop.</p>	<p>"You've Tried the Rest— —Now Try the Best" WOHLNER'S "The Grocery on the Square" The Finest of Everything for the Table!</p>
---	---

<p>Graduation Announcements School Supplies Calling Cards Diploma Specialties <b>The T. C. Lord Co.</b> York, Nebr.</p>	<p><b>Roberts Floral Co.</b> Plants and Cut Flowers of the Best Quality Funeral Designs Our Specialty West 18th Street York, Nebraska</p>
---	---

<p><b>E. S. Clarke &amp; Co.</b> Phone 40 Lumber Coal Construction</p>	<p><b>The Mary Lou Shoppe</b> York's Finest All Season's Attire for the Lady</p>
--	--

and you can COOK." Then came the climax for she looked at him with a sneer and said, "Go sit on a TACK."

Our hero slipped a RODD in his pocket and when I last saw him he was WOCHNER back home. The morning paper stated that he had decided to ENDER all and had committed suicide by jumping over a CRAIG and drowning himself in two or three WELLS.

Perhaps the football player Professor Doty spoke of who couldn't get his signals but determined the direction of the play by the way in which the toes of the other players pointed, sometimes made mistakes because of a pigeon-toed back.

**WE FOUND THESE! IN THE SANDBURR!**

**Gospel Team Give  
Program at Lushton**

Oh, oh! Missed that one, Miss Callender!

We have it—Can get it—  
Or it isn't made.

Jerome Drug Co.

(All right, serve us up a ton of coal!)

# Gillan Baking Co.

S. W. Gillan and Sons

## Betty Jane Beauty Shop

Permanent Waving a Specialty  
ALMA HOBACK, Prop.  
Phone 16 Sun Theatre Bldg.

## Elta M. Hitchcock

Beauty Parlor  
Phone 613 683 East 8th St.

## The Tate Apparel

“Where Quality Excels”  
Silk and Wash Dresses  
Phone 284 717 Lincoln Ave.

## Make YORK Your Trading Center

## FREEMAN'S MARKET

Home Made Lunch Meats,  
Oysters, Cheese and Pickles  
(We're a little suspicious of the oysters!)

## PHOTOGRAPHS FOR CHRISTMAS

You Can Buy Only Good Appliances Here  
(Perhaps they are referring to a device to dis-  
courage rodents.)

## The Crisis in Education

(Yeah, we know the answer to that one—  
EXAMS!)

Hice Presented in  
Vocalistic Recital  
At College Church  
(Wow! That's one on Webster!)

## TEA TENDERED FOR Y. W. C. A. CABINET

(And here we were under the impression that  
they still poured.)

## Why “Con” Life and Its Meals Are Interesting

(That's an easy one. The same thing holds  
good in explaining why people bet on horse  
races.)

We appreciate the patronage of old and new  
students and wish all of you success in life.

## DALLIS MATHIS SHOE REPAIR AND SHINING PARLOR



Enjoy  
**Sonny Boy Bread  
 and Pastries**  
**SOUTH SIDE BAKERY**

105 E 5th St.

Phone 131

Let us measure you for your spring suit. The  
 quality, fit and price will suit you.

**John Olson & Co.**

Tailors and Cleaners

Phone 561

So. Sun Theatre

**THE VOGUE**

is the Fashion  
 Center of York

Coach Ordway is somewhat worried about the vacancy which will result in the football lineup by the graduation of Fullback 'Bob' Moline. But, cheer up, coach, a movement is under way to permit some of the coeds to play and we are sure that Leta Yost will make 'All Conference' next year.

Discrepancies in nature are very interesting. For instance, when 'bone-crushing,' 'blood-thirsty,' 'pugilistic' Art (Wisecracker) Amadon is called upon to execute a couple of fowls for the family larder, he delegates the job to 'your correspondent,' who is inclined to be physically recessive, because he (Arthur) "Just can't kill a chicken"!

The initiative of Bruce Freet along commercial lines is demonstrated by the way in which he responded to the new campus night school which Promoter Jack Graham recently instituted. Bruce immediately started a shop for the purpose of dispensing supplies.

Miss Wakelin maintains that a little necking goes a long way. Of course, it all depends upon where you are going.

**SUN COFFEE SHOPPE**

427 Lincoln Ave.  
 Fountain Service  
 Tobacco Cigars  
 Cigarettes  
 Candy

We appreciate serving  
 good food to good people  
**Ma** **Ma** **We** **Serve** **You?**

Phone 153  
 Short Orders  
 Sandwiches  
 Waffles  
 Good Coffee

Home Baked Pastry Fresh Daily

**Dr. Charles M. Cox**

DENTAL SURGEON

X-RAY AND DIAGNOSIS

Phone 191 604 1/2 Grant Ave.

**J. C. McKinley, M. D.**

Office—421 Lincoln Ave. Tel. 617

Res. —526 College Ave. Tel. 91

**V. J. Morgan**

DENTIST

Annex Bank of Commerce Bldg.  
Office 104 Res. 485

**Dr. C. H. Brugh**

DENTIST

American State Bank Bldg.

Phone 477 Res. 469

**W. F. Eckles, M. D.**

Eye, Ear, Nose, and Throat

Phone 42

**H. G. Patterson**

DENTIST

Wildman Bldg. Phone 210

Res. Phone 210-W-2

**Osteopathy**

Walks hand in hand with nothing but nature's laws and for that reason alone it marks the most significant progress in the history of scientific research. —A. J. Still.

Dr. C. N. Olmsted

American State Bank Bldg.

Directions for interpreting various phenomena about the campus:

If the library is very quiet Miss Cone is exceedingly cross.

If the shades are down in the chapel Miss Lundman is going to give a chapel program.

If no sounds come from the reception room of the 'Con' there are at least two people there.

If Prof. Baller is out of town his classes are struggling with tough exams.

If Evelyn Dixon is home in the evening she is not alone.

If Coach Ordway stands in chapel he is not going to make an announcement, he is going to deliver an oration.

We have it— Can get it—

Or it isn't made.

**Jerome Drug Co.**

Prescription Specialists  
Phone 61

**York Clinic**

D. D. King

R. E. Harry



# A COMPLETE SERVICE

for

## COLLEGE and HIGH SCHOOL ANNUALS

- art
- photo engraving
- color plates
- lithographing
- printing
- bookbinding

Cherished memories of high school and college days preserved for later years in permanent form — *your school annual.*

This company is equipped to plan with your staff and produce the complete book. Consult us about your next years annual.

**State Journal Printing Co.**  
*Lincoln, Nebraska*