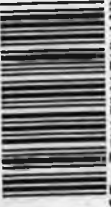


York College

Marathon.  
QUARTO YORK F 672 .Y62 Ma T 1938 8742



ca

# MARATHON

1938

0-13-38

the STAFF  
presents

EDITORIAL STAFF

Editor-in-Chief	John McLaughlin
Associate Editor	Dorothy Bittering
Feature Editor	Norma Harris
Literary Editor	Ruby Clayton
Calendar	Herbert Speece
Calendar	Barney Rees
Sports Editor	Rolland Tonkin
Snapshot Editor	Dulcie Hoofnagle
Staff Typists	Catherine Woolever
	Floriene Lautenschlager
Faculty Literary Advisor	Zelda Wakelin

BUSINESS STAFF

Business Manager	William Curnutt
Sales Manager	Lawrence Deever
Advertising Manager	Erwin Branson
Faculty Business Advisor	Prof. Earl I. Doty



the

M

A

R

A

THON

1938

Levitt Library  
York College  
York, NE 68467.

# CONTENTS

Faculty

Classes

Activities

Athletics

Features

# FOREWORD

It is our wish that this annual will bring to you pleasant memories of another successful, happy college year. For you we have attempted to record such a year and bring its joys to you not once, but many times.





CHARLES A. McCLOUD



BISHOP A. B. STATTON

---


# DEDICATION

---

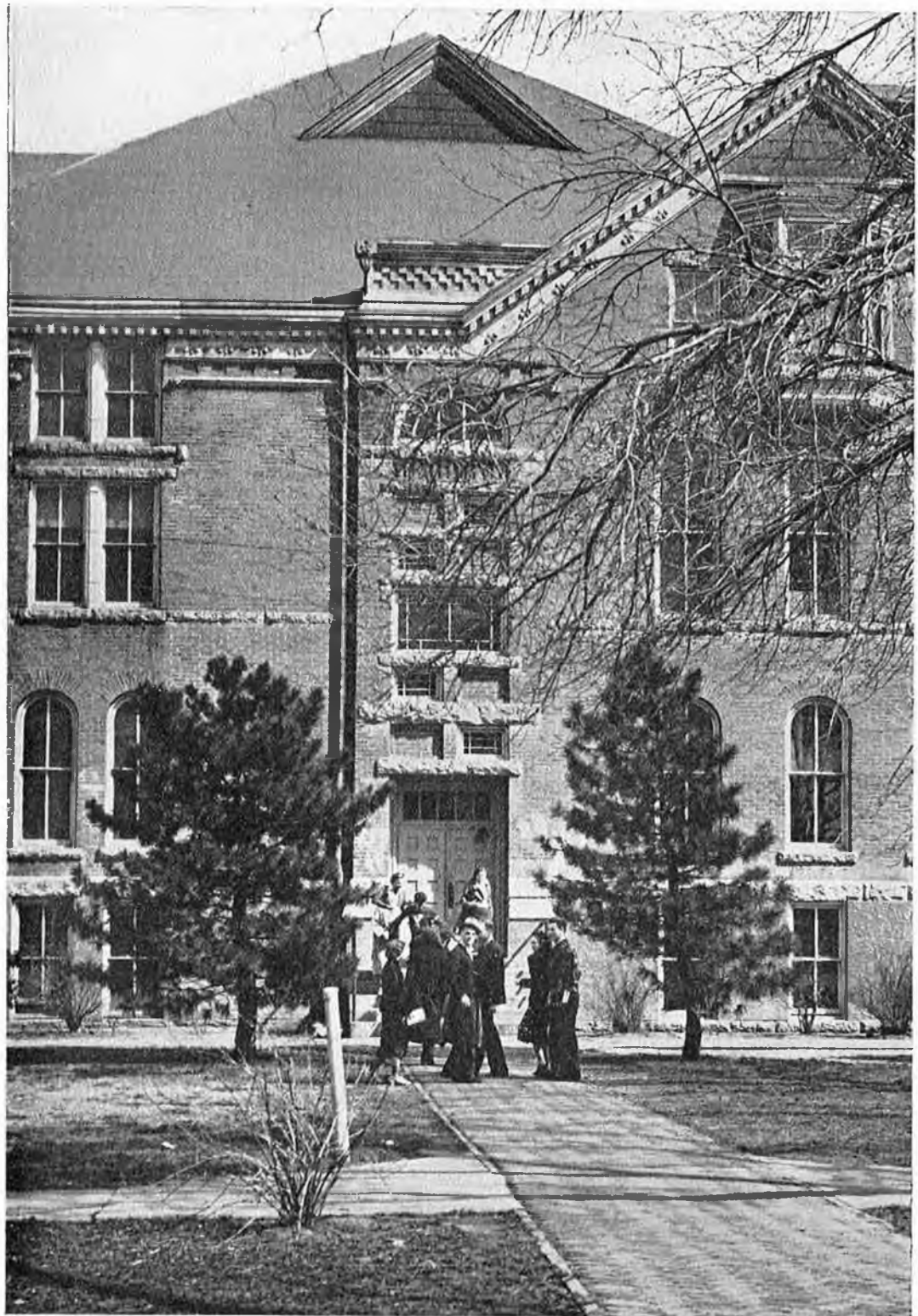
We, the Marathon Staff, respectfully dedicate this annual to the memory of Mr. C. A. McCloud of York and Bishop A. B. Statton of Kansas City.

Mr. McCloud was actively interested in York College since its founding. For many years he was chairman of the Board of Trustees, and gave much of his time as a member of the executive committee. Mr. McCloud gave generous financial contributions as well as his services. He and Mrs. McCloud were always very kind to the York College faculty.

Bishop Statton was acting chairman of the Board of Trustees at the time of his death. He was a member of the York College faculty in 1889 and for several years following. He was actively interested in Christian education and since the union of Kansas City University and York College, his attentions were mainly concerned with York College. He has willingly contributed both time and money for its support.







ADMINISTRATION BUILDING

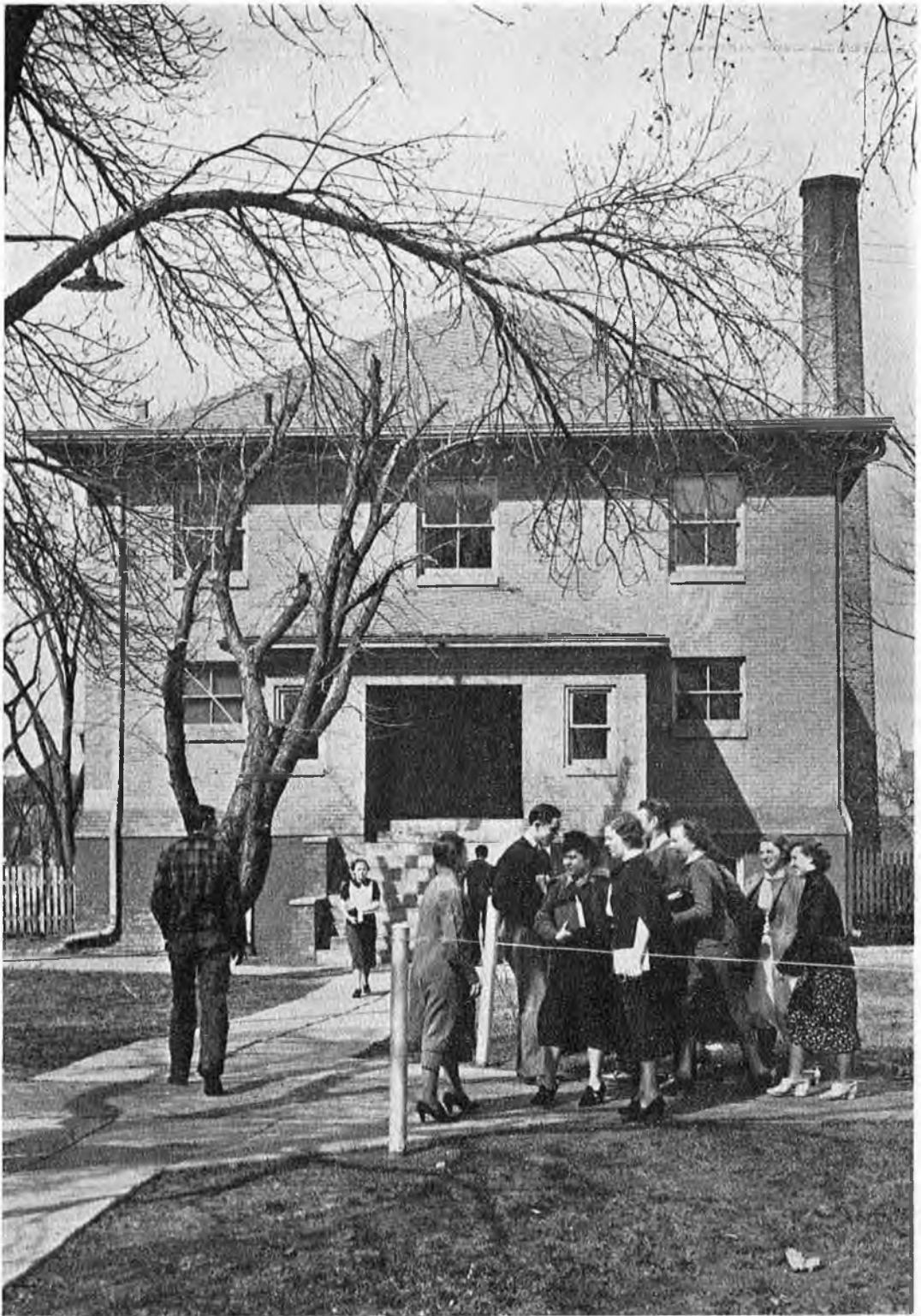


ADMINISTRATION BUILDING

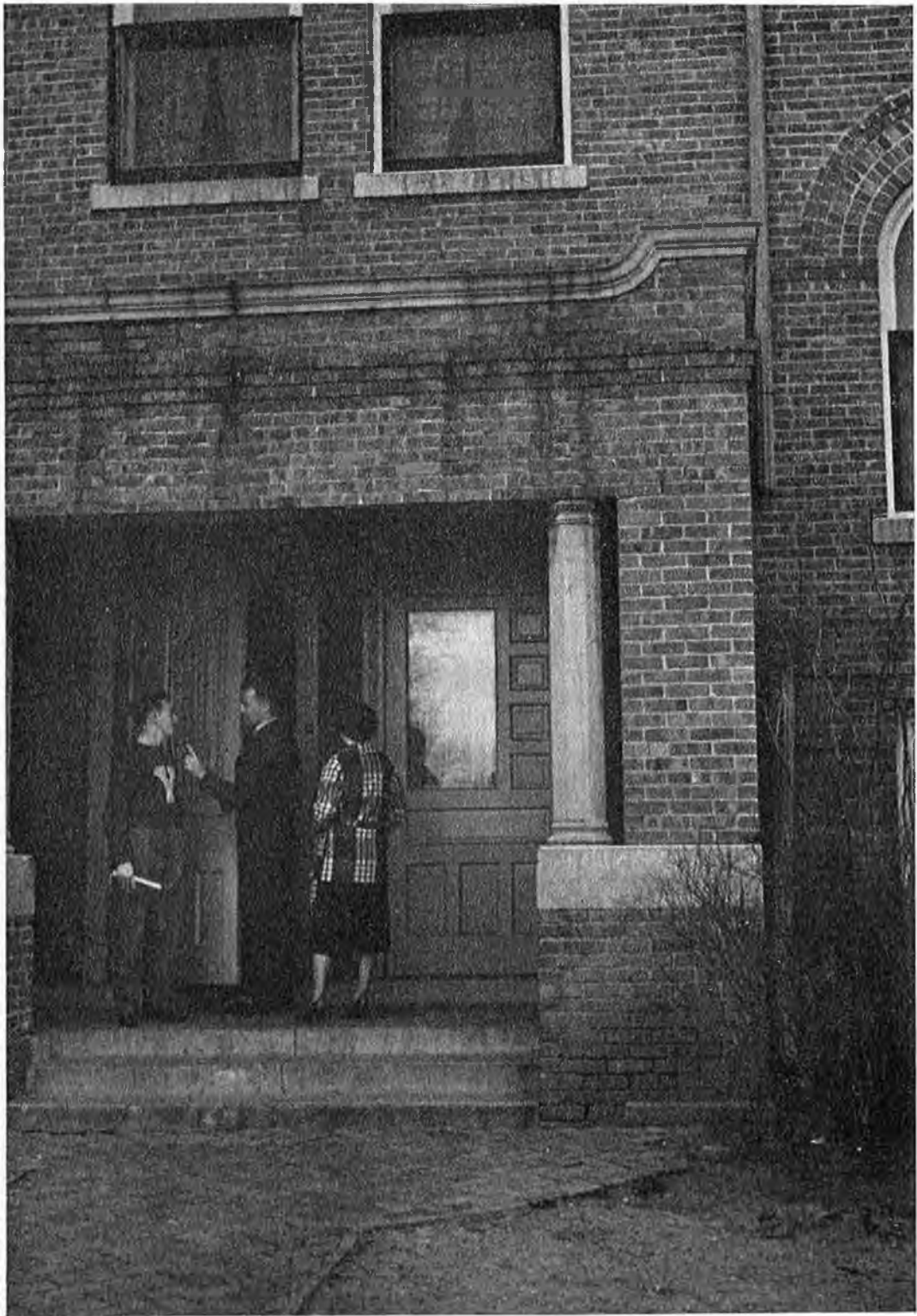


GYMNASIUM





ALUMNI LIBRARY



HULITT CONSERVATORY



HULITT CONSERVATORY  
RECEPTION ROOM

f A C



---

U

L

T

Y

---







PRESIDENT J. R. OVERMILLER

A.B. Kansas City University  
B.D. Bonebrake Seminary  
D.D. York College

President Overmiller has spent the last ten years of his life for York College. He has promoted Christian Education for young people, he has been very kind to help solve their problems, he is considerate of and friendly toward all.

Mr. Overmiller has been and is now building up the student enrollment. His efforts, against adverse financial resources, have been outstandingly successful. We may rest assured that York College has a bright outlook for the future with President Overmiller at the helm.

WALTER E. BACHMAN  
DEAN OF YORK COLLEGE  
PHILOSOPHY AND RELIGIOUS EDUCATION  
A.B., Drake University  
D.D., Philomath College  
M.R.E., Boston University  
D.R.E., Boston University



CHARLES BISSET  
SOCIAL SCIENCE AND HISTORY  
Ph.B., San Joaquin Valley College  
B.D., Bonebrake Seminary  
A.B., Campbell College  
A.M., University of Kansas  
D.D., York College  
Graduate Study: University of Chicago,  
University of Nebraska



EDITH M. CALLENDER  
ENGLISH  
A.B., York College  
A.M., University of Nebraska  
Graduate Study: University of Chicago,  
University of Nebraska

EARL I. DOTY  
HISTORY AND POLITICAL SCIENCE  
A.B., Leander Clark College  
B.D., Bonebrake Seminary  
A.M., University of Chicago  
Graduate Study: University of Chicago,  
University of Kansas





HOWARD CALVIN FEEMSTER  
MATHEMATICS  
A.B., Drury College  
A.M., University of Nebraska  
Graduate Study: University of Nebraska



NEAL GALLANT  
PHYSICAL EDUCATION AND ATHLETICS  
A.B., York College  
Graduate Study: University of Minnesota



HAROLD WALTER HAUGAN  
PHYSICAL SCIENCE  
B.S., University of North Dakota  
M.S., University of North Dakota  
Graduate Study: University of Chicago

W. JACOB KARRAKER  
EDUCATION

B.S., University of Kentucky  
M.A., University of Kentucky  
Graduate Study: University of Illinois,  
University of Florida

ALMA TRESS LUNDMAN  
SPEECH AND ENGLISH

A.B., Huron College  
Dramatic Diploma, Mac Phail School  
Public Reader Diploma, Curry School of  
Expression  
M.A., University of Wisconsin

J. C. MORGAN

CLASSICAL LANGUAGE AND BIBLE

A.B., Campbell College  
A.M., University of Kansas  
Graduate Study: University of Chicago,  
University of Nebraska



W. C. NOLL

BIOLOGY

A.B., York College  
B.Ed., N.S.T.C. Peru  
A.M., University of Nebraska



MARY ALICE SLEE

EDUCATION

A.B., Iowa State Teachers College  
M.S., Cornell University  
Graduate Study: University of Iowa,  
Greeley State Teachers College



R. E. TOWNSEND

BUSINESS COLLEGE

M.Accts., Campbell College  
Teacher's Diploma, Palmer School of  
Penmanship  
Teacher's Certificate, Gregg School of  
Shorthand  
Higher Accountance Course Diploma, La Salle  
Extension University,  
University of Kansas

ZELDA M. WAKELIN

MODERN LANGUAGES

A.B., Nebraska Wesleyan University  
M.A., University of Nebraska  
Graduate Study: University of Nebraska

Levitt Library  
York College  
York, NE 68467





CHARLES H. AMADON

DEAN OF HULITT CONSERVATORY OF MUSIC  
VOICE, HISTORY AND THEORY

New England Conservatory of Music  
Graduate Study: Whitney International  
School of Music, L.A. Torens of Chicago,  
William Shakespeare, Jr.,  
Chicago Music School

GLADYS PEARSON

PIANO AND KINCELLA METHOD

Mus.B., University of Nebraska  
Graduate Study: Rudolph Ganz, Froken  
Stockmarr, Percy Grainger

EDA L. RANKIN

PIANO AND PIPE ORGAN

Mus.B., University of Nebraska  
Graduate Study: Rudolph Ganz, Percy  
Grainger, Posef Lhevvine

GRACE ELIZABETH REYNOLDS

METHODS IN PUBLIC SCHOOL MUSIC

Bachelor of School Music, Oberlin College

LUCILE WILLIAMS BACHMAN  
DEAN OF WOMEN  
A.B., Drake University  
Graduate work: University of Chicago and  
Boston University



EDITH M. CONE  
LIBRARIAN  
B.S., University of Nebraska  
Graduate Study: University of Nebraska



A. V. HOWLAND  
FINANCIAL FIELD SECRETARY  
A.B., Kansas City University  
B.O., Kansas City University

ANNA J. THOMPSON  
REGISTRAR AND TREASURER  
York College



C L A S

---

S E S

---

Seniors 1937  
Seniors 1938  
Juniors  
Sophomores  
Freshmen  
Business College





MARGARET AKOFER

YORK, NEBRASKA

Major: English  
Y. W. C. A. 1, 2; Zetas; Sandburr Staff,  
Associate Editor 3; W. A. A. 1; Class  
Secretary and Treasurer



EVALENA CALDWELL

VELARDE, NEW MEXICO

Major: Mathematics  
Y. W. C. A. 3, 4; Zetas 3, 4; Glee Club 3;  
W. A. A. 3; Life Work Recruits 3



RUTH ALLESHOUSE

TRENTON, MISSOURI

Major: Social Science  
Trenton Junior College 1, 2; Y. W. C. A.  
3, 4; Life Work Recruits 3, 4; Histrionic  
Club Sec. 4; Glee Club 3; Orchestra



ELIZABETH FEEMSTER

YORK, NEBRASKA

Majors: Mathematics, English  
Y. W. C. A.; Pals; Orchestra; Glee Club;  
W. A. A. 1, 2, 3; Life Work Recruits



DOROTHY ALEXANDER

PARSONS, KANSAS



IRENE HOFGARD

TORRINGTON WYOMING

Majors: English, Music  
Y. W. C. A. Vice-Pres. 3; Vocal Trio 4;  
Histrionic Club Treas. 1; Zetas; Glee  
Club; Panther Club 1, Cheer Leader 3;  
Music 'Y' Club 4; Student Council 4;  
W. A. A. Sec. 1, President 2; Marathon  
Board 3; Panther Sweetheart 4



FLORA E. BLAKELEY

KEARNEY, NEBRASKA

Major: History  
Y. W. C. A. Treas. 4; Histrionic Club  
Treas. 2; Pals; Glee Club; Panther Club  
4; Student Council 4; W. A. A. Vice-Pres.  
4; Class President 4; May Queen 4;  
Kearney State Teachers College 1

DON VARCOE

PRIMROSE, NEBRASKA  
Football Captain 4; "Y" Club



IRVIN G. LEWIS

AURORA, NEBRASKA

Major: English  
Y. M. C. A.; Histrionic Club 1; Alpha  
Sigma Phi President 3, 4; Pals President  
2; Sandburr Staff Editor 3, 4; Debate; Stu-  
dent Council President 4; Class President  
1, 3



LETA YOST

YORK, NEBRASKA

Major: History  
Y. W. C. A. Cabinet 2, 3; Histrionic Club  
1; Pals; Sandburr Staff 4; Panther Club  
3, Cheer Leader 1, 2; W. A. A. Sec. 2,  
President 4; Representative Y.C. Woman 4



RAYMOND H. REED

GRESHAM, NEBRASKA

Majors: History, Education  
Band Director 1; Orchestra 1; Glee Club  
2; Student Council 2; Basketball 1



WESLEY WHITE

BLACKWELL, OKLAHOMA



CECIL R. SMITH

VAN NUYS, CALIFORNIA

Major: Mathematics  
Y. M. C. A. Vice-Pres. 3; "Y" Club;  
Pals 1, 2, 3; Glee Club 4; Panther Club  
4; Class Vice-Pres. 4; Football 1, 2, 3;  
Basketball 2, 3, 4; Track Captain 3, 4;  
Baseball 1



WARREN W. WITHAM

AGRA, KANSAS

Major: History  
Y. M. C. A.; "Y" Club President 4; Zetas  
Vice-Pres. 3; Panther Club; Class Presi-  
dent 4; Football; Student Manager Bas-  
ketball 3; Representative Football Man  
4; Representative Y. C. Man 4



1930-1931



## SENIOR CLASS

KLINGMAN  
 SIMMONS  
 CLAYTON  
 TONKIN  
 MURPHY  
 SPEECE  
 HALL  
 BITTINGER  
 BLINN  
 HEINS  
 ESTEY  
 LUTZ  
 McCONNELL  
 McPHERSON  
 DAY  
 CURNUTT  
 DOTY  
 STRICKLER  
 BLACK  
 FRANZ  
 STASKOPF  
 ALEXANDER  
 LEASE

Nearly one hundred students enrolled in the freshman class of York College in 1934. After the withdrawals and additions of the past four years, twenty-three were granted their degrees in the spring of 1938.

Leslie Callahan was class president the first year, Robert Merchant and Keith Adamson led the class the second year, Fred Rasp and William Curnutt were the third year leaders, while William Curnutt and Abie Franz headed the Seniors.

A picnic was an enjoyable event during the Freshman year. The Sophomore Reception and the presentation of two trees to the college were highlights of the second year. The Junior-Senior banquet, given for the Seniors at the United Brethren Church, was in a flower garden setting.

This year, on Recognition Day, the class attended the services given by the juniors, lunched together at the Hotel Williams and attended a show as the closing event of the day. There have been many other pleasant activities this last year, a memorable one for the class of 1938.

Professor Earl I. Doty was the sponsor of the class for the last three years. The class wishes to express its deepest appreciation to Mr. and Mrs. Doty for their many kindnesses.



ABIE FRANZ  
HENDERSON, NEBRASKA

Major: Physical Science  
Y. M. C. A. 2; Pals 1; Band 1; Class  
President 4; Student Manager, Football  
2, Track 1, Basketball 1



LA VELLE M. LEASE  
SUMNER, IOWA

Major: Music  
Y. W. C. A.; String Trio 3; Histrionic  
Club 1; Pals; Band 1, 2; Orchestra; Glee  
Club; Life Work Recruits



LUCILE HALL  
PARSONS, KANSAS

Major: Biology  
Y. W. C. A. Vice-Pres. 3, 4; Pals 3, 4;  
Student Council 4; W. A. A. 3, 4



REX LUTZ  
FAIRMONT, NEBRASKA

Major: History  
"Y" Club; Football, Captain 4; Basket-  
ball; Track



LUCILLE HEINS  
YORK, NEBRASKA

Major: History  
Y. W. C. A. Cabinet 4; Histrionic Club;  
Pals; Glee Club; W. A. A. Treas. 2, Sec.  
3, Pres. 4; Press Guild



WILLIAM WESLEY McCONNELL  
OTIS, COLORADO

Major: Social Science  
Y. M. C. A. 4; "Y" Club; Panther Club 4;  
Football



CRESTON S. KLINGMAN  
WICHITA, KANSAS

Majors: Music, English  
Y. M. C. A.; Quartette 3; Histrionic Club;  
Pals; Orchestra 3; Glee Club; Music "Y"  
Club; Lambda Phi Sec., Pres.; Student  
Council 3; Life Work Recruits 2

HERBERT SPEECE  
MEADOWLANDS, MINNESOTA  
Major: Mathematics  
Marathon Board, Calendar Editor

GLENN O. McPHERSON  
RUSH, COLORADO

Major: History  
Y. M. C. A., Treas. 1, Pres. 2; Alpha  
Sigma Phi; Band 1, 2; Glee Club 1, 2, 3;  
Student Council Pres. 4; Life Work Re-  
cruits Vice-Pres. 2; Class Vice-Pres. 4

LOIS M. STOSKOPF  
HOISINGTON, KANSAS

Major: Sociology  
Y. W. C. A. Sec. 2; Histrionic Club 1;  
Pals; Band 1, 2, 3; Class Sec. and Treas. 4

EMMA C. MURPHY  
YORK, NEBRASKA

Major: History  
Y. W. C. A. 4; String Trio 3; Orchestra  
2, 3; Music "Y" Club 3, 4; W. A. A. 2

BERNICE M. STRICKLER  
JULIAN, NEBRASKA

Major: Music  
Y. W. C. A.; String Trio 1, 2, 3; Vocal  
Trio 4; Histrionic Club Vice-Pres. 4; Pals  
President 4; Orchestra President 4; Glee  
Club; Panther Club 3; Music "Y" Club  
3, 4; W. A. A. 4; Life Work Recruits;  
Representative Y. C. Woman 4

ALICE SIMMONS  
YORK, NEBRASKA

Major: Mathematics  
Y. W. C. A.

ROLLAND E. TONKIN  
AMISTAD, NEW MEXICO

Major: Mathematics  
Y. M. C. A. Cabinet 2, 3, 4; "Y" Club  
Sec. and Treas. 2, 3, 4; Zetas; Panther  
Club 3; Student Council Sec. and Treas.  
4; Marathon Board, Sports Editor; Class  
Vice-Pres. 4; Football; Basketball Captain  
3, 4; Track; Representative Football Man  
4; Representative Y. C. Man 4





LYLE K. ANDERSON

CEDAR FALLS, IOWA

Y. M. C. A.; Alpha Sigma Phi; Zetas;  
Orchestra 2; Student Council 2; Life Work  
Recruits



JARVIS B. COBE

YORK, NEBRASKA

Y. M. C. A.; "Y" Club; Zetas President  
2; Student Council; Life Work Recruits;  
Track



K. VELMA ANDERSON

CEDAR FALLS, IOWA

Y. W. C. A.; Zetas; Life Work Recruits



BERNARD L. COOK

FORT SCOTT, KANSAS

Y. M. C. A.; Histrionic Club 2; Alpha  
Sigma Phi 2; Pals; Sandburr Staff; Glee  
Club; Debate 2; Life Work Recruits 2, 3;  
Class Vice-Pres. 2



AUDREY V. BLACK

YORK, NEBRASKA

Y. W. C. A. Cabinet 2, 4; Histrionic Club  
1; Pals 1, 4; Band 1, 2; Orchestra 2; Glee  
Club 1, 2; Life Work Recruits 1



M. LAWRENCE DEEVER

YORK, NEBRASKA

Y. M. C. A. President 2, 3; "Y" Club;  
Histrionic Club President 2; Alpha Sigma  
Phi Vice-Pres. 3; Zetas President 2;  
Sandburr Staff, Editor 3; Glee Club; De-  
bate; Student Council; Life Work Re-  
cruits; Marathon Board, Sales Manager;  
Press Guild President; Student Manager 1



MARIE BOMHOFF

WICHITA, KANSAS

Y. W. C. A.; Zetas Treas. 3; Life Work  
Recruits



JOHN A. DOWD

DAWSON, IOWA

Y. M. C. A.; Zetas; Orchestra 1; Glee  
Club 2; Life Work Recruits Vice-Pres. 2



ERWIN BRANSON

LAWRENCE, KANSAS

Y. M. C. A.; Histrionic Club Treas. 1;  
Alpha Sigma Phi President 2, 3; Pals  
President 2; Sandburr Staff, Business  
Manager 2, 3; Debate; Life Work Re-  
cruits President 3; Marathon Board, Ad-  
vertising Manager; Press Guild Vice-  
Pres.; Class President 1; Tennis



**DORIS GOODRICH**

PHILOMATH, OREGON

Y. W. C. A. Cabinet; Zetas 2, 3; Life Work Recruits Vice-Pres. 3; Press Guild

**MARY MARGARET du RAND**

PARSONS, KANSAS

Y. W. C. A.; Histrionic Club; Alpha Sigma Phi 3; Zetas; Sandburr Staff; Band 3; Orchestra 2, 3; Glee Club 2, 3; Debate 2; W. A. A. 2, 3; Press Guild 3

**NORMA E. HARRIS**

GREAT FALLS, MONTANA

Y. W. C. A.; Histrionic Club Vice-Pres. 2; Pals Treas.; Sandburr Staff 2, 3; Panther Club Vice-Pres. 3; W. A. A. Treas. 2, 3; Life Work Recruits 3; Marathon Board, Feature Editor; Press Guild; Class Sec. 3, Treas. 1

**BURTON FEASTER**

YORK, NEBRASKA

"Y" Club; Football; Basketball; Track

**LeROY M. HOFFMAN**

CHEYENNE, WYOMING

**MARGARET A. FRIESNER**

PARSONS, KANSAS

Y. W. C. A.; Pals; Lambda Phi; Life Work Recruits

**GWENDOLYN B. HOOFNAGLE**

DAWSON, IOWA

Y. W. C. A. Cabinet 3; Histrionic Club 1; Pals Vice-Pres. 2; Band 1, 2; Glee Club 1; Panther Club 2; W. A. A.; Class Treas. 3; Tennis; Homecoming Queen 3

**BOB GALE**

YORK, NEBRASKA

Y. M. C. A.; "Y" Club; Quartette; Glee Club; Panther Club 1; Music 'Y' Club; Football; Basketball; Tennis; Golf

**DULCIE L. HOOFNAGLE**

DAWSON, IOWA

Y. W. C. A. Cabinet, President 2; Glee Club 1; Lambda Phi; Student Council; Life Work Recruits; Marathon Board, Snap-shot Editor; Class Vice-Pres. 2; Panther Sweetheart 3



JUNIOR CLASS





**CHARLENE HURLEY**  
DES MOINES, IOWA

Y. W. C. A.; Life Work Recruits; Pals;  
Student Council; W. A. A. 1; Class Vice-  
Pres. 2



**ALDEN MARVEL**  
GILTNER, NEBRASKA

"Y" Club; Quartette; Alpha Sigma Phi  
2, 3; Zetas; Band Director 2, 3; Orchestra;  
Glee Club; Debate 2; Music "Y"  
Club; Lambda Phi Vice-Pres. 2, 3; Tennis



**DORIS O. JOHNSON**  
MACKSVILLE, KANSAS

Y. W. C. A.; String Trio 1, 2; Histrionic  
Club Sec. 1, Pres. 3; Pa s Vice-Pres. 3;  
Orchestra Sec. 3; Glee Club; Music "Y"  
Club President 2; Student Council 1; Life  
Work Recruits 2, 3; Class Vice-Pres. 1.



**JOHN HALE McLAUGHLIN**  
YORK, NEBRASKA

"Y" Club; Histrionic Club; Zetas; Mara-  
thon Board, Editor; Class President 2,  
Vice-Pres. 3; Football; Track



**ALBERT H. KAMM**  
PLATTE CENTER, NEBRASKA

Y. M. C. A. 3; Zetas 2, 3; Glee Club 2, 3;  
Class Vice-Pres. 3, Sec. 2



**DORIS M. MILLS**  
LINCOLN, NEBRASKA

Y. W. C. A.; Histrionic Club; Zetas;  
Glee Club; Life Work Recruits



**VAUGHN F. LEAMING**  
JAMAICA, IOWA

Y. M. C. A.; "Y" Club; Histrionic Club  
1; Pals; Sandburr Staff; Glee Club 1; Stu-  
dent Council 1, 2; Life Work Recruits  
President 1, 3; Press Guild 3; Class Presi-  
dent 3; Football 3; Basketball 2, 3; Track



**HAROLD X. MILLER**  
PUEBLO, COLORADO

Y. M. C. A.; Alpha Sigma Phi 3; Pals;  
Glee Club 1, 2; Debate 2; Life Work Re-  
cruits 3



**MARY LEHMAN**  
WOODWARD, OKLAHOMA



**DOROTHY RIGGS**

HUDSON, IOWA

Y. W. C. A. President 2, 3, Cabinet 2; Histrionic Club 1, 2; Pals President 3; Band 3; Orchestra 2, 3; Glee Club; Student Council 2; Life Work Recruits; Press Guild

**OCIE E. MORAN**

YUMA, COLORADO

Y. W. C. A. Vice-Pres. 3, Cabinet 2; Pals Vice-Pres. 3; Glee Club Sec. 2; W. A. A. 3; Life Work Recruits Sec. and Treas. 3

**ROBERT SPORE**

YORK, NEBRASKA

"Y" Club; Pals; Football; Track

**HAZEL EMMA MORGAN**

YORK, NEBRASKA

Y. W. C. A. Cabinet 2, 3; Trio Accompanist 2, 3; Histrionic Club Sec. 3; Alpha Sigma Phi 2, 3; Zetas President 2; Sandburr Staff 2, 3; Glee Club 1, 3; Debate 2; Music 'Y' Club Sec. and Treas. 3; Lambda Phi President 2; Student Council 2; Life Work Recruits 3; Press Guild Sec. and Treas. 3; Class Treas. 2.

**MAURICE THOMPSON**

YORK, NEBRASKA

Y. M. C. A.; "Y" Club Vice Pres.; Pals; Football; Basketball 1, 3

**WILBUR C. OVERMILLER**

YORK, NEBRASKA

Y. M. C. A. Cabinet 2, 3; "Y" Club; Quartette 2, 3; Glee Club 2; Music 'Y' Club 2, 3; Football captain-elect; Basketball 1, 3; Track 1

**ESTHER MARIE THORNTON**

BILLINGS, MONTANA

Y. W. C. A. 2, 3; Zetas 2, 3; Sandburr Staff 3; Glee Club 2; Life Work Recruits 2, 3; Press Guild 3; Class Sec. 3

**BARNY B. REES**

PUEBLO, COLORADO

Y. M. C. A.; "Y" Club; Histrionic Club 2; Alpha Sigma Phi 2, 3; Zetas; Panther Club 2; Debate 2; Life Work Recruits; Marathon Board, Calendar Editor 1, 3; Track

**IRVIN WALL**

DALLAS, OREGON

Tabor College 1, 2; Y. M. C. A. President 3; Quartette 3; Pals 2, 3; Glee Club 3; Panther Club 3; Student Council 3; Life Work Recruits 3





**VESTA BEAM**  
 ESBON, KANSAS  
 Y. W. C. A. 1, 2; Zetas Sec. 2;  
 Orchestra 1; Glee Club 1; W.A.A. 2



**WILLIAM CARTER**  
 DENVER, COLORADO  
 Y. M. C. A.; Zetas; Band; Orchestra



**MARLIN C. BEDIENT**  
 BRADSHAW, NEBRASKA  
 Y. M. C. A.; "Y" Club; Alpha Sigma Phi; Life Work Recruits; Football



**MARJORIE COOK**  
 BROOKFIELD, MISSOURI  
 Y. W. C. A. Cabinet; String Trio; Zetas, President 2; Orchestra; Glee Club; Music 'Y' Club; Lambda Phi; Student Council 1, 2; Life Work Recruits; Class Sec. 2



**HENRY BERGEN**  
 HENDERSON, NEBRASKA  
 "Y" Club



**WALDO DAHLSTEDT**  
 YORK, NEBRASKA  
 Y. M. C. A.; Zetas; Band; Orchestra; Class President 2



**LEONA P. BERRY**  
 BUNKER HILL, KANSAS  
 Y. W. C. A.; Zetas; Lambda Phi; Student Council 2; W. A. A.; Life Work Recruits



**WAYNE W. DAHLSTEDT**  
 YORK, NEBRASKA  
 Y. M. C. A.; Histrionic Club 1; Zetas Vice-Pres. 2; Sandburr Staff; Feature Writer; Band 2; Orchestra 1; Glee Club 1, 2; Panther Club President 1; Press Guild



**DONALD M. BOEHR**  
 HENDERSON, NEBRASKA  
 Y. M. C. A.; "Y" Club; Pals; Football 2



**RALPH W. DOREMUS**  
 STROMSBURG, NEBRASKA  
 Y. M. C. A.; Football 1, 2



**FREDA ROSETTA BURCHARD**  
 DENVER, COLORADO  
 Y. W. C. A.; Pals; Lambda Phi; Life Work Recruits



**JAMES ALLEN FARLEY**  
 RUSH, COLORADO  
 Y. M. C. A.; Pals; Student Council



**MARY JEAN BUTTERMORE**  
 WOODSTON, KANSAS  
 Y. W. C. A.; Zetas; W. A. A.; Life Work Recruits; Class President 2

CLAYTON LEHMAN  
WOODWARD, OKLAHOMA

MYRTLE FRANKLIN  
SALINA, KANSAS  
Y. W. C. A.; Life Work Recruits

VERLON LUTZ  
FAIRMONT, NEBRASKA  
Panther Club, Cheer Leader 1, 2;  
W. A. A. Sec. 2

ELVA FREELAND  
DUMONT, IOWA  
Y. W. C. A.; Pals; Life Work Re-  
cruits

JEAN MATTINGLY  
CEDAR FALLS, IOWA  
Y. W. C. A.; Histrionic Club;  
Pals; Sandburr Staff; Glee Club;  
Life Work Recruits; Press Guild

MAURICE P. HERRICK  
RAYMORE, MISSOURI  
Y. M. C. A.; Zetas; Sandburr  
Staff; Glee Club; Press Guild

FRANCIS MATTISON  
NEW CAMBRIA, KANSAS  
Y. M. C. A.; Zetas Treas. 2; Band;  
Orchestra; Glee Club; Life Work  
Recruits

LORENE HOCKOM  
YORK, NEBRASKA  
Y. W. C. A.

OTIS MATTOX  
GRANGER, IOWA  
Y. M. C. A.; Pals; Band; Orch-  
estra

ALFRED KAMM  
PLATTE CENTER, NEBRASKA  
Quartette; Glee Club; Class Treas. 2

HOMER O. MESERVE  
LUSHTON, NEBRASKA  
Y. M. C. A.; Zetas Vice-Pres. 2

OLIVE KING  
SALINA, KANSAS  
Y. W. C. A.; Zetas; Glee Club;  
Music 'Y' Club 2; Lambda Phi; Life  
Work Recruits

LOIS MILLER  
RUSSELL, KANSAS  
Y. W. C. A. Cabinet, President 2;  
Orchestra; Glee Club; Panther  
Club; Lambda Phi; W. A. A. Vice-  
Pres. 2; Life Work Recruits





**DAISY MILLISON**  
 ESPANOLA, NEW MEXICO  
 Y. W. C. A.; Histrionic Club;  
 Zetas; Glee Club; Life Work Re-  
 cruits



**JAMES SHAPPELL**  
 MANKATO, KANSAS  
 Y. M. C. A. 1; Alpha Sigma Phi  
 2; Band 2; Glee Club



**WILBUR NACHTIGALL**  
 HENDERSON, NEBRASKA  
 Y. M. C. A. Cabinet; Pals; Life  
 Work Recruits



**FREDA WINONA SMITH**  
 CHAMPION, NEBRASKA  
 Y. W. C. A. 2; Alpha Sigma Phi;  
 Pals; Band; Debate; W. A. A.;  
 Life Work Recruits; Press Guild



**BETTY ANN OWEN**  
 BEAVER CROSSING, NEBRASKA  
 Orchestra; Glee Club; Music 'Y'  
 Club; Lambda Phi; W. A. A.



**G. LUCILLE VANNICE**  
 YORK, NEBRASKA  
 Y. W. C. A.



**RAYMOND PETERSON**  
 POLK, NEBRASKA  
 "Y" Club; Football; Basketball;  
 Tennis



**DORIS ELAINE WHITE**  
 WACO, NEBRASKA  
 Y. W. C. A.; Pals Treas. 2; Or-  
 chestra; Glee Club



**L. EDITH RABUCK**  
 TAMA, IOWA  
 Y. W. C. A. Sec.; Histrionic Club;  
 Zetas; Glee Club 1; Life Work Re-  
 cruits; Class President 1



**CHARLES WHITNEY**  
 AURORA, NEBRASKA  
 "Y" Club, Band; Football



**SALLY RASP**  
 GRESHAM, NEBRASKA  
 W. A. A.; Pals; Panther Club  
 Cheer Leader; Class Sec. 2; Glee  
 Club; Student Council



**DANIEL WRIGHT**  
 DES MOINES, IOWA  
 Y. M. C. A.; "Y" Club; Alpha  
 Sigma Phi; Zetas; Debate; Student  
 Council 2; Life Work Recruits;  
 Class Vice-Pres.; Football; Track



**FERDINAND E. SAINDON**  
 ZURICH, KANSAS  
 "Y" Club; Histrionic Club; Foot-  
 ball; Basketball

LOIS COBE  
 YORK, NEBRASKA  
 Y. W. C. A.; Histrionic Club;  
 Zetas; W. A. A.; Life Work Re-  
 cruits; Class Sec.

EVERETTE W. BERRY  
 BUNKER HILL, KANSAS  
 Y. M. C. A.; Zetas; Life Work  
 Recruits

FRANKLIN COONLEY  
 YORK, NEBRASKA

EILEEN CALLAHAN  
 YORK, NEBRASKA  
 Y. W. C. A.; Zetas; Glee Club;  
 Panther Club

BILLY DEAN  
 YORK, NEBRASKA  
 Zetas; Band; Orchestra; Glee Club;  
 Class Sec.

FREDRICK M. CARLSEN  
 MUSCATINE, IOWA  
 Y. M. C. A.; Pals; Life Work Re-  
 cruits; Football; Track

FLORENCE DEEVER  
 YORK, NEBRASKA  
 Y. W. C. A.; Histrionic Club Sec.;  
 Zetas Vice-Pres.; Glee Club; Life  
 Work Recruits

CLARENCE G. CARLSON  
 MEAD, NEBRASKA  
 Y. M. C. A.; Pals; Band; Orch-  
 estra; Glee Club; Life Work Re-  
 cruits; Football; Track

GERALD DIERDORFF  
 GENEVA, NEBRASKA  
 Y. M. C. A. Treas.; "Y" Club;  
 Quartette; Pals; Glee Club; Music  
 "Y" Club; Life Work Recruits;  
 Class President; Football; Basket-  
 ball

ELLSWORTH CARLSON  
 POLK, NEBRASKA  
 Y. M. C. A.; "Y" Club; Histrionic  
 Club; Alpha Sigma Phi; Debate;  
 Class Treas.; Football; Basket-  
 ball

CLAYTON DE MOTT  
 GERING, NEBRASKA  
 Band; Orchestra; Glee Club; Football

FLOYD CHENOWETH  
 HAVILAND, KANSAS  
 Y. M. C. A.; Histrionic Club;  
 Zetas; Band; Glee Club; Life Work  
 Recruits; Basketball, Track,  
 Tennis

AGNES M. DRAKE  
 STERLING, KANSAS  
 Y. W. C. A.; Zetas; W. A. A.;  
 Life Work Recruits





**RUSSELL S. DUNLOP**  
 OGDEN, IOWA  
 Y. M. C. A. Cabinet; Histrionic Club; Alpha Sigma Phi; Pals; Sandburr Staff; Glee Club; Debate; Life Work Recruits; Press Guild; Class President; Allied Youth President



**VERNE A. HERRICK**  
 RAYMOND, MISSOURI  
 Y. M. C. A.; Zetas; Glee Club



**BRUCE EDMUNDSON**  
 BERTHOUD, COLORADO  
 Y. M. C. A.; Zetas; Glee Club; Track



**ELMOND HOLBROOK**  
 ORCHARD, NEBRASKA  
 Y. M. C. A.; Zetas; Band; Glee Club; Basketball



**BETTY JO ERICSON**  
 STROMSBURG, NEBRASKA  
 Y. W. C. A.; Pals; W. A. A.



**MAXINE HOOVER**  
 DALLAS CENTER, IOWA  
 Y. W. C. A.; W. A. A.



**ROBERT FOSTER**  
 YORK, NEBRASKA



**MAXYNE HYLTON**  
 YORK, NEBRASKA  
 Y. W. C. A.; Zetas; Glee Club; Lambda Phi; W. A. A.



**LODEMA FRIEDEN**  
 SHICKLEY, NEBRASKA  
 Vocal Trio; Glee Club; Music 'Y' Club; W. A. A.



**VIVIAN JARAMILLO**  
 VALLECITOS, NEW MEXICO  
 Y. W. C. A.; Pals; W. A. A.



**HENRY A. HANSEN**  
 DES MOINES, IOWA  
 "Y" Club; Zetas; Sandburr; Press Guild; Football



**ANNA MAE JOHNSON**  
 SANTA CRUZ, NEW MEXICO  
 Y. W. C. A. Cabinet; Histrionic Club; Zetas; Glee Club; W. A. A.; Life Work Recruits



**LORENE LUCILLE HAUG**  
 SHELTON, NEBRASKA  
 Y. W. C. A.; Histrionic Club; Zetas; Lambda Phi; Life Work Recruits



A. LENORA LESLIE  
 STILLWATER, OKLAHOMA  
 Y. W. C. A.; Zetas; Glee Club;  
 Life Work Recruits

ROBERT JONES  
 CONCORDIA, KANSAS  
 Y. M. C. A.

GLADYS LEYMASTER  
 AURORA, NEBRASKA  
 Y. W. C. A.; Pals; Glee Club;  
 Life Work Recruits

LETA MAE KLINE  
 YORK, NEBRASKA  
 Press Guild

ROBERTA LIVERS  
 IONA, KANSAS  
 Y. W. C. A.; Histrionic Club;  
 Zetas; Glee Club; W. A. A.; Life  
 Work Recruits

CELIA KLONE  
 YORK, NEBRASKA  
 Histrionic Club; W. A. A.

HELEN LUMBUS  
 HUDSON, IOWA  
 Y. W. C. A.; Histrionic Club;  
 Pals; Sandburr Staff; Glee Club;  
 W. A. A.; Life Work Recruits;  
 Press Guild

INEZ LAWELLIN  
 ATTICA, KANSAS  
 Y. W. C. A.; Histrionic Club;  
 Zetas Sec.; Orchestra; Life Work  
 Recruits

ERNESTO MANZANARES  
 SANTA CRUZ, NEW MEXICO  
 Pals

VAYLE LEAMING  
 DAWSON, IOWA  
 Pals

ALDEN MARKEL  
 CIRCLE, MONTANA

MIRIAM LEASE  
 SUMNER, IOWA  
 Orchestra; Glee Club

ANNE NORA MATTHEWS  
 McCOOL JUNCTION, NEBRASKA  
 W. A. A.





MARIE MATTHEWS  
FAIRMONT, NEBRASKA  
W. A. A.



BERTHA M. RIGGS  
HUDSON, IOWA  
Y. W. C. A.; Histrionic Club;  
Pals; Orchestra; Glee Club; Life  
Work Recruits



ELMA MIERAU  
HENDERSON, NEBRASKA



NADINE LORETTA RINKER  
WICHITA, KANSAS  
Y. W. C. A.; Histrionic Club; Zetas;  
Glee Club; W. A. A.; Life Work Re-  
cruits



GLADYS MOHLER  
HUMACAO, PUERTO RICO  
Y. W. C. A.; Histrionic Club;  
Pals; Glee Club; W. A. A.



JACOB SANDOVOL  
WAGON MOUND, NEW MEXICO



HAROLD PATTERSON  
YORK, NEBRASKA



RALPH SCHMIDT  
BRADSHAW, NEBRASKA  
Histrionic Club



DONA M. PFALTGRAFF  
DUMONT, IOWA  
Y. W. C. A.; Pals Life Work Re-  
cruits



JAY SHAFFER  
YORK, NEBRASKA



HUGH W. PURSEL  
BRADSHAW, NEBRASKA  
Y. M. C. A.; Pals; Panther Club;  
Basketball



ELIZABETH SHIRK  
CIRCLE, MONTANA  
Y. W. C. A.; Pals; W. A. A.;  
Life Work Recruits



HELEN QUIRING  
HAMPTON, NEBRASKA



HOWARD P. WALKER  
YORK, NEBRASKA  
Y. M. C. A.

ESTHER STEINGARD  
HENDERSON, NEBRASKA

MARY LUE WARNER  
KALISPELL, MONTANA  
Y. W. C. A. Cabinet; Pals; Glee  
Club; Life Work Recruits

RAYMOND STEVENS  
POLK, NEBRASKA  
Y. M. C. A.

EVELYN WESTWOOD  
YORK, NEBRASKA  
Y. W. C. A.; Histrionic Club;  
Zetas

WANIETA RUTH SULLIVAN  
BALDWIN CITY, KANSAS  
Y. W. C. A.; Vocal Trio; His-  
trionic Club; Pals; Glee Club Presi-  
dent; Music 'Y' Club; Life Work  
Recruits; Press Guild

LELAND WIDGA  
POLK, NEBRASKA  
Y. M. C. A.

FLORIENE LAUTENSCHLAGER  
YORK, NEBRASKA  
Business Department  
Y. W. C. A.; Pals

ALICE MAE DRESDEN  
YORK, NEBRASKA  
Business Department

MARTHA LINCOLN  
YORK, NEBRASKA  
Business Department  
Y. W. C. A.; Pals; Sandburr Staff;  
Glee Club; Student Council; Press  
Guild

HELEN BLACK  
YORK, NEBRASKA  
Business Department

CATHERINE WOOLEVER  
YORK, NEBRASKA  
Business Department  
Y. W. C. A.; Zetas; Glee Club;  
Panther Club



YORK NEBRASKA

ACTIV

---

ITIES

---





## STUDENT COUNCIL

FARLEY  
 WRIGHT  
 TONKIN  
 COBE  
 CALDWELL  
 BERRY  
 HALL  
 BLINN  
 WALL  
 HOOFNAGLE  
 RASP  
 DEEVER  
 COOK  
 McPHERSON  
 LINCOLN  
 BISSET

President . Glenn McPherson  
 Vice President . Merle Blinn  
 Sec.-Treas. . Rolland Tonkin

The Student Council was organized in 1928 to strengthen friendly and cooperative relations between faculty and students. It also attempts to maintain high standards of fellowship among the students themselves.

The council makes and enforces freshman rules, sponsors the election of the Representative Man and Woman of the College, and Editor and Business Manager of the Sandburr.

The government of the student body depends to an extent upon the Student Council for it has the authority to enact certain rules and regulations. The council controls the number of offices a student may hold by means of a point system.

Each new student is given a handbook in which is found the constitution of the council, the rules for campus government, and the part the freshman plays in campus life.



## PANTHER CLUB

Hot dogs, five cents! Hot dogs, five cents! Hear the cry of enthusiastic Panther Club members at every college athletic contest. Whether in sunshine, wind and dust, mud and rain, or sleet and snow the members of this organization always with pep and loyalty generate college spirit for the entire student body.

Pep chapels, in cooperation with Marvel's pep band, have been popular mediums for carrying out the club's purpose. The Panther Club in conjunction with the Student Council planned and supervised Homecoming Day.

The major feature of the club was the annual banquet honoring the football men. "Gallantry" was the theme of the banquet. The identities of the Panther Sweetheart, the Representative Man, and the 1938 captain were revealed. Erwin Branson was the toastmaster. The following program was presented: Invocation, Dr. W. E. Bachman; "Gallantry", Don Eberhart; "Attack", male quartette; "La Belle", Panther Sweetheart, Dulcie Hoofnagle; "Line-up", Creston Klingman; "Agility", Dr. R. E. Harry; "Nonsense", Bertha Riggs; "Tact", Representative Man, Rolland Tonkin; "Reverse", 1938 Captain, Wilbur Overmiller; "Y. C. Captain", Rex Lutz.

FROID  
 WOOLEVER  
 GRAHAM  
 MILLER  
 McCONNELL  
 LUNDMAN  
 CALLAHAN  
 WALL  
 HARRIS  
 KARRAKER  
 LUTZ  
 PURSEL  
 BITTINGER  
 DAHLSTEDT  
 RASP

President . Dorothy Bittinger  
 Vice-President . Norma Harris  
 Sec.-Treas. . Glenn Graham  
 Cheer Leaders . Verlon Lutz,  
 Sally Rasp,  
 Wayne Dahlstedt





## MARATHON BOARD

DEEVER  
 HARRIS  
 CLAYTON  
 SPEECE  
 REES  
 DOTY  
 CURNUTT  
 WAKELIN  
 McLAUGHLIN  
 HOOFNAGLE  
 BITTINGER

Editor-in-chief . . . John McLaughlin  
 Business Manager . . . William Curnutt  
 Associate Editor . . Dorothy Bittinger  
 Feature Editor . . . . . Norma Harris  
 Calendar . . . . . Herbert Speece  
 Calendar . . . . . Barny Rees  
 Sports Editor . . . . . Rolland Tonkin  
 Snapshot Editor . . . Dulcie Hoofnagle  
 Literary Editor . . . . . Ruby Clayton  
 Staff Typists . . . . Catherine Woolever  
                                  Floriene Lautenschlager  
 Advertising Manager . . Erwin Branson  
 Sales Manager . . . . . Lawrence Deever  
 Faculty Advisor . . . . Zelda M. Wakelin  
 Faculty Advisor . . . Prof. Earl I. Doty

In 1917, the Junior class of York College published the first annual, stating: "If its contents have brought a smile to your face or caused you to think more kindly of York College, the annual board will feel amply paid for all its efforts". All the "Marathon" boards since this time have worked with the same idea, bringing happiness and pleasant memories to you.

The 1938 "Marathon" board, composed of members of the Junior and Senior classes, has tried to follow in the footsteps of its predecessors. We sincerely hope you enjoy and value the 1938 Marathon.



## SANDBURR STAFF

du RAND  
 LUMBUS  
 HERRICK  
 HARRIS  
 EBERHART  
 MORGAN  
 LEAMING  
 SULLIVAN  
 THORNTON  
 RIGGS  
 HEINS  
 LINCOLN  
 BRANSON  
 CALLENDER  
 DEEVER  
 DAHLSTEDT  
 MORGAN

To publish college news and to give some place to feature material and less to editorial comment is the function of the Sandburr. Since its first publication in 1900, it has steadily grown and now its appearance is anticipated every two weeks not only by over two hundred students and faculty members but also by about eight hundred parents, ministers of the area, and alumni. Its manifold duty includes the fulfillment of a student demand for a college publication and the need of the administration for a medium to inform, create impressions and disseminate campus atmosphere in the constituent area.

Creation of the Press Guild was the principal activity of the Sandburr staff aside from its regular work on the publication. The Guild as it meets bi-weekly has taken its place among the established organizations of the campus.

Editor-in-Chief . . . Lawrence Deever  
 Business Manager . . . Erwin Branson  
 Faculty Advisor . Prof. Edith Callender  
 Alumni Historian . Prof. J. C. Morgan







## Young Men's Christian Association

BLINN  
 DIERDORFF  
 TONKIN  
 OVERMILLER  
 LEAMING  
 DOWD  
 McPHERSON  
 COOK  
 DEEVER  
 COBE  
 BEDIENT

President . . . Lawrence Deever  
 Vice President . . . Rolland Tonkin  
 Secretary . . . Marlin Bedient  
 Treasurer . . . Gerald Dierdorff

The Young Men's Christian Association strives to nourish and strengthen the Christian character of the students. It places emphasis on social, mental, physical, and spiritual life of the men of the college. Programs of a varied nature are used to promote these aims.

Several social functions are held during the year, many of which are in cooperation with the Y. W. C. A. The Jolly-up opened each semester and the May Fete climaxed the year's joint program.

Several interesting talks were given during the weekly meetings of the Y. M. C. A., stimulating thought on valuable subjects. On the physical side, intramural ping pong, basketball, and tennis tournaments were held by the organization.

The Y. M. C. A. was also one of the groups sponsoring the Christmas party for the poor children; during the entire year this spirit of cooperative effort with other organizations has been apparent.



## LIFE WORK RECRUITS

The Recruits are interested in the development of the spiritual and religious values of life. The membership includes those who expect to enter full time religious work and many who will enter other professions, but who wish to develop the spiritual side of their natures.

The Recruits have had a larger membership this year than ever before. They hold devotional meetings once a week and there are also numerous social gatherings.

The play, "The Rose on the Dial" was presented many times in churches of Nebraska and Iowa. The proceeds from this play go to the "African Project." This is a plan sponsored by the Recruits, the Y. M. C. A., and the Y. W. C. A. to raise money to send a student to Africa as a missionary teacher. Vaughn Leaming, a Recruit member, will represent York College in Africa for two years beginning in the fall of 1938.

- |             |               |
|-------------|---------------|
| V. ANDERSON | SHIRK         |
| COBE        | MILLER        |
| BUTTERMORE  | DRAKE         |
| MILLS       | LEYMASTER     |
| CLAYTON     | LIVERS        |
| GOODRICH    | RINKER        |
| PFALTZGRAFF | KING          |
| SMITH       | HEATHERINGTON |
| SPEECE      | JARAMILLO     |
| MINCKS      | JOHNSON       |
| MORAN       | MILLION       |
| RABUCK      | HARRIS        |
| WARNER      | D. RIGGS      |
| SULLIVAN    | BEDIENT       |
| MATTINGLY   | CARLSON       |
| LESLIE      | KLINGMAN      |
| MILLER      | OVERTURFF     |
| BERRY       | DAY           |
| DAHLSTEDT   | ESTEY         |
| JOHNSON     | STRICKLER     |
| L. ANDERSON | BLINN         |
| LUMBUS      | LEAMING       |
| FRANKLIN    | MATTISON      |
| ALEXANDER   | DEEVER        |
| FREELAND    | COOK          |
| B. RIGGS    | MORGAN        |
| DEEVER      | CALDWELL      |
| LAWELLIN    | BRANSON       |
| FRIESNER    | THOMAS        |
| JOHNSON     | DUNLOP        |
| BERRY       | DIERDORFF     |
| MOHLER      | WRIGHT        |
| LEASE       | COBE          |
| THORNTON    | MATTOX        |
| HAUG        |               |

- |                      |               |
|----------------------|---------------|
| President . . .      | Erwin Branson |
| Vice-President . . . | Bernard Cook  |
| Sec.-Treas. . . .    | Leona Berry   |
| Sponsor . . . .      | J. C. Morgan  |

REC-1-V-1-E-SS  
  
 2000  
 1938



## ZETA LITERARY SOCIETY

- |            |            |
|------------|------------|
| HAUGAN     | COOK       |
| McLAUGHLIN | EDMONDSON  |
| MESERVE    | HENDRICKS  |
| CHENOWITH  | WOOLEVER   |
| V. HERRICK | MATTISON   |
| MARVEL     | MILLION    |
| REED       | KING       |
| WESTWOOD   | ESTEY      |
| RABUCK     | DAY        |
| MINCKS     | J. COBE    |
| MILLER     | LESLIE     |
| THORNTON   | RINKER     |
| BERRY      | WRIGHT     |
| JOHNSON    | ALEXANDER  |
| GOODRICH   | LIVERS     |
| HAUG       | DEEVER     |
| MILLS      | ANDERSON   |
| CALLAHAN   | ANDERSON   |
| BUTTERMORE | HOLBROOK   |
| L. COBE    | REES       |
| DEAN       | IVES       |
| LAWELLIN   | DAHLSTEDT  |
| MORGAN     | CARTER     |
| du RAND    | M. HERRICK |
| DEEVER     |            |

- |                 |                 |
|-----------------|-----------------|
| President . . . | Jarvis Cobe     |
| Vice Pres. . .  | Florence Deever |
| Secretary . . . | Inez Lawellin   |
| Treasurer . . . | Marie Bomhoff   |
| Sponsor . . .   | Harold Haugan   |

The Zetaethean Society for women and the Zetagatean Society for men were combined in 1914, forming the present Zeta Literary Society. The organization has its meetings on alternate Tuesday evenings in Zeta Hall.

The programs were designed to further both intellectual and social development. In addition to the regular meetings, parties were held occasionally, with the reception, picnic, and banquet as special events.



## PALS

DUNLOP	RASP
MATTOX	MORAN
McNURLIN	KLINGMAN
BRANSON	SLEE
DIERDORFF	HALL
BOEHR	JOHNSON
SAINDON	TALBOT
PURSEL	HEATHERINGTON
MANZANARES	HEINS
FARLEY	BURCHARD
MILLER	HOOVER
OVERTURF	JARAMILLO
BLINN	HARRIS
CARLSON	FREELAND
WHITE	STRICKLER
SHIRK	STOSKOPF
MOHLER	JOHNSON
LEYMASTER	BLACK
D. RIGGS	FRIESNER
MATTINGLY	SMITH
G. HOOFNAGLE	CLAYTON
SULLIVAN	HENDRICK
WARNER	PFALTZGRAFF
LAUTENSCHLAGER	LEASE
LINCOLN	B. RIGGS
CAULKINS	ERICSON
LUMBUS	LEAMING

The Pals Literary Society was formed in 1914 when the Philomathean Society for women and the Amphictyon Society for men were merged into one organization.

The programs were varied and entertaining. They included talks, readings, debates, and musical numbers. The social development of the student was emphasized. Several parties, the fall reception, the spring picnic, and banquet made up the Pals social calendar.

President . . . . . Bernice Strickler  
 Vice-President . . . . . Doris Johnson  
 Secretary . . . . . Jean Mattingly  
 Treasurer . . . . . Doris White

A  
C  
C  
I  
V  
I  
T  
E  
S





## Young Women's Christian Association

"The purpose of the Young Women's Christian Association is to realize a full and creative life through a growing knowledge of God."

The members of the Y. W. C. A. try to reach this aim through devotional meetings each Tuesday and through various charitable and social activities. Its program is often linked with that of the Young Men's Christian Association.

The two organizations give a "Jolly-up" at the beginning of each semester. They also sponsor the May-day program during Commencement week. The proceeds from this event help to send delegates to the regional conference in Estes Park. Last summer the president and several other members of the Y. W. C. A. attended the conference.

The social activities of the year were begun with a membership tea, the first week of school, to welcome new girls. The installation banquet this winter was one of the cleverest and gayest ever held.

- STOSKOPF
- D. HOOFNAGLE
- MILLER
- BLACK
- STRICKLER
- SLEE
- HOOFNAGLE
- HARRIS
- CLAYTON
- HEINS
- OVERMILLER
- MORGAN
- COOK
- RIGGS
- HALL
- WARNER

- President . . . . . Dorothy Riggs
- Vice-President . . . . . Lucille Hall
- Secretary . . . . . Marjorie Cook
- Treasurer . . . . . Mary Lou Warner
- Faculty Advisor . . . . . Mary Alice Slee
- Church Advisor . . . . . Mrs. G. R. Overmiller



## HISTRIONIC CLUB

### FIRST SEMESTER OFFICERS

President . . . . . Doris Johnson  
 Vice-Pres. . . . . Wanieta Sullivan  
 Secretary . . . . . Hazel Emma Morgan  
 Treasurer . . . . . Lois Cobe  
 Business Manager . . . . . Carrol Thomas  
 Sponsor . . . . . Alma Tress Lundman

### SECOND SEMESTER OFFICERS

President . . . . . Doris Johnson  
 Vice-Pres. . . . . Bernice Strickler  
 Secretary . . . . . Florence Deever  
 Treasurer . . . . . Lois Cobe  
 Business Manager . . . . . Carrol Thomas  
 Sponsor . . . . . Alma Tress Lundman

RABUCK  
 MOHLER  
 HAUG  
 DUNLAP  
 MILLS  
 MINCKS  
 MATTINGLY  
 HEINS  
 du RAND  
 McNURLIN  
 B. RIGGS  
 SCHMIDT  
 LUMBUS  
 LUNDMAN  
 WESTWOOD  
 DEEVER  
 THOMAS  
 JOHNSON  
 COBE  
 KLONE  
 MORGAN

### JANE EYRE

#### CAST

Mrs. Fairfax . . . . . Mary Margaret du Rand  
 Adele Varens . . . . . Nadine Rinker  
 Grace Poole . . . . . Helen Lumbus  
 Jane Eyre . . . . . Jean Mattingly  
 Edward Rochester . . . . . Creston Klingman  
 Bessie Leaven . . . . . Bertha Riggs  
 Bertha . . . . . Roberta Livers  
 Dowager Lady Ingram . . . . . Bernice Strickler  
 Lady Mary . . . . . Doris Mills  
 Dr. Carter . . . . . Orvis McNurlin  
 Lady Blanche . . . . . Doris Johnson  
 Sir Wilfred Lynn . . . . . John McLaughlin  
 Zita . . . . . Anna Mae Johnson  
 Richard Mason . . . . . Carrol Thomas  
 Rev. John River . . . . . Russell Dunlop  
 Rev. Mr. Wood . . . . . Ralph Schmidt

The romantic play, "Jane Eyre", by Wall Spence, based on the immortal novel by Charlotte Bronte, was given Friday evening April 22, 1938.

The dramatization is an authentic version of the book that is beloved by millions. It is a true and startling revelation of the life and romance of a girl born to love and to live. But strange happenings occur to test her mettle. So only after many harrowing experiences and romantic adventures do Jane and Rochester see happiness ahead.







## STRANGERS AT HOME

LUNDMAN  
SAINDON  
MINCKS  
DUNLOP  
JOHNSON  
WRIGHT  
BRANSON  
du RAND  
THOMAS  
MILLS  
SCHMIDT  
SULLIVAN  
MORGAN  
McNURLIN  
COBE  
ALLISON  
RIGGS  
RABUCK

### CAST

Mrs. Crosby . . . . .	Bertha Riggs
Russ Crosby . . . . .	Orvis McNurlin
Mr. Crosby . . . . .	Erwin Branson
Aunt Phoebe . . . . .	Mary Margaret du Rand
Jean Crosby . . . . .	Dorothy Jean Mincks
Kay Crosby . . . . .	Doris Johnson
Mrs. Humiston . . . . .	Edith Rabuck
Stuart Mason . . . . .	Daniel Wright
Tom Gibbs . . . . .	Russell Dunlop
Mr. Humiston . . . . .	Ralph Schmidt
Mrs. Fowler . . . . .	Lois Cobe
Mr. Fowler . . . . .	Thompson Allison
Mr. Whittaker . . . . .	Carrol Thomas
Ethel Yates . . . . .	Hazel Emma Morgan
Mrs. Newton . . . . .	Doris Mills
Helen Scott . . . . .	Wanieta Sullivan
Joe Strafford . . . . .	Ferdinand Saindon

Charles Devine's play, "Strangers at Home," was given Friday evening December 10, 1937, as the first performance of the Histrionic Club for the season of 1937-38.

"Strangers at Home" is a comedy-drama centering around the home life of the Crosbys. Mrs. Crosby and Aunt Phoebe, wearied of the routine of family life, turn the Crosby home into a home for tourists, thus almost depriving the Crosbys of any real home life. The love story of Kay Crosby and Tom Gibbs which is interwoven, heightens the suspense and brings the drama to a happy ending.





## ALPHA SIGMA PHI

McPHERSON  
 THOMAS  
 MILLER  
 DUNLOP  
 BLINN  
 MARVEL  
 MORGAN  
 CURNUTT  
 WRIGHT  
 SMITH  
 BEDIANT  
 LUNDMAN  
 du RAND  
 DEEVER  
 BRANSON  
 CARLSON  
 MORGAN

To promote interest and activity in the field of speech is the primary purpose of the local chapter of Alpha Sigma Phi, national forensic fraternity. Truth, wisdom, and eloquence come from the Greek words whose initial letters are Alpha, Sigma, and Phi.

Membership in the society is granted on an honorary basis, and is restricted to those who have done outstanding work in intercollegiate speech competition. Associate membership is granted to all of those who participate in speech activities, and have not yet earned recognition in intercollegiate contests. These persons may participate in all social activities of the society.

The chief project of this year's organization was the sponsorship of an All-College minstrel show, the proceeds from which were used to defray expenses of a debate trip to St. Paul, Minnesota.

President . . . . . Erwin Branson  
 Vice-President . . . Lawrence Deever  
 Secretary-Treasurer . Lyle Anderson





## DEBATE

DUNLOP  
SMITH  
BRANSON  
DEEVER  
WRIGHT  
CARLSON

Three major tournaments and a pair of dual engagements comprised the schedule of York College debaters during the 1937-38 season. Two teams traveled almost 2,500 miles during the year.

Emerging without a defeat, the York A team, composed of Lawrence Deever, first speaker, and Erwin Branson, second speaker, tied with six of the midwest's largest universities for first place in the Southwest College tournament at Winfield, Kansas. Next came two non-decision duals with Doane College and Kearney State Teachers College, after which two teams entered the annual St. Thomas College tournament at St. Paul, Minnesota. The teams did very well there.

Returning to enter the state tournament at Kearney, March 10, the A team defeated Doane, Kearney, Chadron, and Peru, while Wright and Dunlop turned in wins over Hastings and Doane in the B tournament.

This year's debate question was: "Resolved: that the National Labor Relations Board should be empowered to enforce arbitration of all industrial disputes."



## LAMBDA PHI

COOK  
 BERRY  
 OWEN  
 MARVEL  
 BACHMAN  
 KING  
 MORGAN  
 RANKIN  
 MILLER  
 KLINGMAN  
 HOOFNAGLE  
 PEARSON

Lambda Phi, an honorary society for piano scholarship, was organized in the fall of 1935. It intends to benefit advanced piano students through associations and cooperation. It also hopes to increase the appreciation of music, not only among the members but in the community as well.

The society is now composed of thirteen active members and one honorary member. They were chosen by the piano faculty, after fulfilling certain requirements as to practice and public appearances for three consecutive semesters. Maxyne Hylton, Margaret Friesner, Lucille Haug, and Freda Burchard were admitted into the organization this year.

Highlights of the year's program were the annual banquet and the spring recital.

President . . . . Creston Klingman  
 Vice-President . . . . Alden Marvel  
 Sec.-Treas. . . . Hazel Emma Morgan





## GLEE CLUB

- |           |           |
|-----------|-----------|
| KLINGMAN  | OWEN      |
| WALL      | LINCOLN   |
| HEINS     | SHAPPELL  |
| D. RIGGS  | GALE      |
| WOOLEVER  | CARLSON   |
| MILLER    | CHENOWETH |
| LAWELLIN  | FRIEDEN   |
| DEEVER    | MATTINGLY |
| MATTISON  | WARNER    |
| EDMUNDSON | COOK      |
| HOLBROOK  | AMADON    |
| COOK      | COOK      |
| DIERDORFF | STRICKLER |
| ESTEY     | MORGAN    |
| MORAN     | RINKER    |
| B. RIGGS  | DE MOTT   |
| du RAND   | DEAN      |
| WHITE     |           |

### GLEE CLUB

President . . . Wanieta Sullivan  
 Secretary . . . . . Lois Miller

In December the College Glee Club and the United Brethren Church choir presented Handel's "Messiah".

The biggest project of the second semester was a ten day tour of several towns in Kansas, where programs were given in the United Brethren churches. The trip was the first made in the newly purchased college bus. The journey was not only successful, but all had a hilarious time.



## MUSIC "Y" CLUB

ESTEY  
 GALE  
 KING  
 MURPHY  
 STRICKLER  
 KLINGMAN  
 OVERMILLER  
 JOHNSON  
 MORGAN  
 MARVEL  
 OWEN  
 AMADON  
 COOK  
 FRIEDEN

President . . . . . Betty Owen  
 Secretary . . . Hazel Emma Morgan

The Music "Y" Club is an honorary organization composed of students who have earned a music "Y". In order to receive a "Y", one must appear in at least ten memorized programs of five numbers each. The members have all been active in vocal or instrumental trios or quartettes.





## BAND

SHAPPELL  
 CARTER  
 STATZ  
 HOLBROOK  
 MATTISON  
 WHITNEY  
 DAHLSTEDT  
 MATTOX  
 DeMOTT  
 DEAN  
 du RAND  
 SMITH  
 RIGGS  
 CARLSON  
 CHENOWETH  
 MARVEL

Director . . . . . Alden Marvel

The Band has played for all the football and basketball games, and several times has accompanied the teams on their trips. The group has also participated in several civic drives and programs.

The pep chapels and rallies are incomplete without the band. It has come to be recognized as an important symbol of the school spirit.





## ORCHESTRA

MILLER  
 JOHNSON  
 du RAND  
 STRICKLER  
 ESTEY  
 WHITE  
 B. RIGGS  
 LAWELLIN  
 KLINGMAN  
 D. RIGGS  
 DEAN  
 CARLSON  
 OWEN  
 DeMOTT  
 MATTISON

This group, under the direction of Dean Amadon, has appeared in several chapel programs, and has taken part in programs at the United Brethren Church.

Symphony music has been stressed this year. Some of the selections chosen were: Brahm's "Hungarian Dances Numbers 5 and 6," Cadman's "Festal March in C", and "Pomp and Circumstance" by Elgar.

Pres. and Concert Master, Bernice Strickler  
 Secretary . . . . . Doris Johnson  
 Director . . . . . Dean Amadon



A T H L



---

ETHICS

---



NEAL GALLANT  
Head Coach and Director of Athletics

Neal Gallant was graduated from York College with the class of 1932. He was a fine athlete, winning conference honors in football, basketball, and golf. During the following three years his high school teams at Polk, Nebraska compiled an enviable record. He was then asked to return to York as coach.

The football teams under Neal have won a large percentage of their games. They are noted for their clean play and sportsmanship. While his basketball teams have not cracked the win column so often, they have always done their best, and several times have upset some of the big conference teams. Track, tennis, golf, and intramural athletics have also been successfully promoted during Coach Gallant's three years at York College.

York College had a successful football season, winning four games, losing three, and tying two. In every game York was on the short end as far as poundage was concerned, sometimes as much as twenty pounds per man. The team went through its first five games without a defeat, but its lack of size and experienced reserves kept it from keeping up such a pace.

The highlights were the tie game at Doane in a sea of mud, the trouncing of Western Union Homecoming day, and the gallant fight Coach Gallant's men put up against a heavy, powerful Midland aggregation.

York loses but three men by graduation, so, we predict another good season next fall. An experienced and a larger team will return.

York	26	McCook	0
York	20	Dana	7
York	0	Doane	0
York	13	Sterling (Kans.)	0
York	13	Western Union	
		(Ia.)	0
York	0	Wesleyan	14
York	0	Concordia	0
York	0	Midland	13
York	0	Hebron	14
	—		—
Total	72	Total	48



Back row—Gallant, Quick, Carlson, Carlsen, Eberhart, Hansen, Buller, Boehr, Leaming, Thompson, Whitney, DeMott.

Front row—J. Haberman, Ekdahl, J. McLaughlin, Wright, Saindon, Lutz, Peterson, Allison, P. McLaughlin, Dierdorff, Overmiller.

A  
C  
C  
E  
P  
T  
E  
D  
S  
E  
S  
S  
I  
O  
N





REX LUTZ

Height 5' 8" Weight 177 lbs.

As captain of the "37" squad "Poddy" earned his fourth letter in football. His unusual speed and aggressiveness made him a valuable guard. Injuries kept him out of several games, the team missing him badly.



HAROLD HABERMAN

Height 6' Weight 155 lbs.

The only freshman in the starting line-up "Habe" proved a very valuable man for the squad. He is a pass receiver, punter, and defensive end of ability. Opponents will have to watch this man.



PAUL McLAUGHLIN

Height 6' 2" Weight 155 lbs.

After lettering at end his Freshman year, Paul was moved to tackle this fall when an experienced player was needed. Although light, he proved to be superior in his new post. His crashing tackles could not only be seen but heard.

RAYMOND PETERSON

Height 5' 10" Weight 162 lbs.

"Pete", playing his second year, was shifted from center to guard, where he worked as a fast, low charging line-man. He was particularly effective on defense. Raymond has two years of competition left.







### WILBER OVERMILLER

Height 6' 3" Weight 180 lbs.

"Slim" will captain the 1938 squad. He has lettered three years as a regular center. Wilbur backs up the line in incredible fashion, his passes are always accurate, and he can block. Truly an outstanding player.



### JOHN HABERMAN

Height 5' 11" Weight 165 lbs.

"Mabel" finished his second year with two football letters under his belt. He is a fast, pass catching end whom opponents have come to recognize as a constant threat. Western Union will remember his touchdown return of an intercepted pass.



### ROLLAND TONKIN

Height 6' 2" Weight 185 lbs.

Captained the team when Lutz was out. "Sheepo" was a fine leader, a hard hitting tackle. He always played a good game, but against Western Union he played a great game. Tonkin, the team will certainly miss you.



### WILLIAM McCONNELL

Height 5' 8" Weight 163 lbs.

"Colorado Bill" proved that you don't need size to play football. He is a senior with two football letters to his credit. Never injured and always ready to trim the big boys down, he was a fine guard.





**MAURICE THOMPSON**

Height 5' 9" Weight 140 lbs.

The midget of the team, but also the spark. "Bus" throws strikes to the ends and backs, punts with the best of them, and is an elusive runner. He has one more year with York, having made three letters at his halfback post.



**FERDINAND SAINDON**

Height 5' 10" Weight 160 lbs.

"Kelly" directed play from his quarterback position, and was a very efficient blocker. Saindon has two more years to show his excellent brand of football to York College followers.



**DANIEL WRIGHT**

Height 5' 11" Weight 165 lbs.

Shifted from end to halfback "Dan" never had a chance to prove himself till the Midland game, in which he played an outstanding part. He is a speedy, very shifty back who uses his interference to advantage.

**GERALD DIERDORFF**

Height 6' Weight 165 lbs.

"Halfback Jerry" plays hard from beginning to end. He played more as the season progressed, always giving a good account of himself. His tackling and ball carrying ability stood out.





### JOHN McLAUGHLIN

Height 6' 1" Weight 170 lbs.  
Regular fullback for two seasons, "Mac" has two years left, if he chooses to take them. He is a rugged line backer, a powerful back with a love for playing football. He led the team's scoring.



### ROBERT SPORE

Height 5' 9" Weight 150 lbs.  
This was "Popo's" third year on the squad. He had his big night against Sterling, Kansas, scoring both touchdowns. He is a good field general, outstanding on defense, and an exceptional blocker.

### WALTER EKDAHL

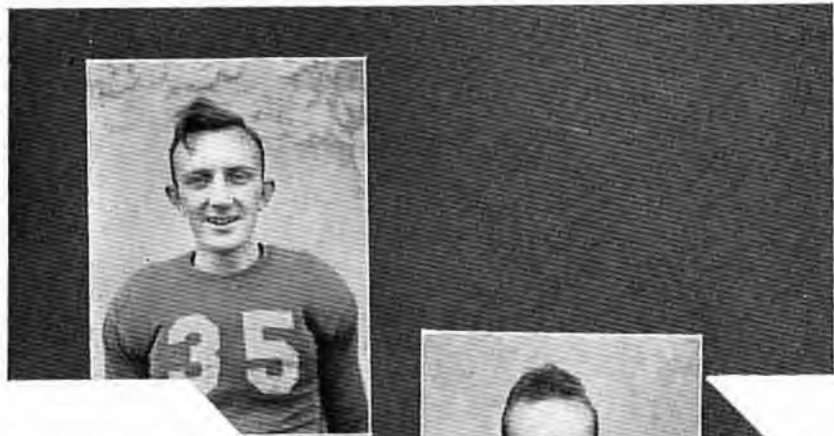
Height 5' 8" Weight 150 lbs.  
Hard running halfback is "Ek". He lettered one year at guard and two in the backfield. His sprinting speed and vast experience will help next year's team immeasurably.



### THOMPSON ALLISON

Height 5' 9" Weight 180 lbs.  
A Panther grew up last summer in the form of this dependable guard. Thompson played a stellar role throughout the season, and we all know we can count on him for the next two years to hold up the center of the York line.

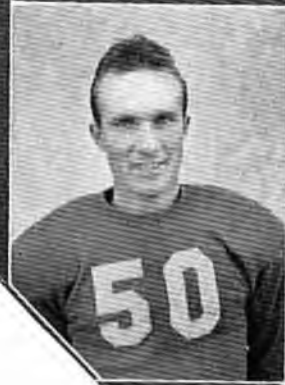




**DONALD EBERHART**

Height 6' Weight 173 lbs.

Freshman tackle. "Skip's" nice red hair and baby blue eyes fooled his opponents into thinking he was soft, but they soon found out differently. He is a hard worker with his share of spirit.



**VAUGHN LEAMING**

Height 5' 10" Weight 160 lbs.

Vaughn, a Junior playing his first football, held down a guard position, when called on, like a veteran. He was a cool, strong player. We hope he will return to York someday and cash in on his experience and ability.



**ELLSWORTH CARLSON**

Height 6' Weight 155 lbs.

Tall, rangy freshman end, Ellsworth could receive passes and block well. He came along rapidly last fall, and should be ready to step right in there next year with any of them.

**ELMER BULLER**

Height 5' 10" Weight 160 lbs.

Elmer played his first football this year. He progressed rapidly, showing determination and fight. A driving guard with unlimited endurance, he will help the team a great deal in the coming years.





### MARLIN BREDIENT

Height 5' 9" Weight 155 lbs.

Marlin, a sophomore making his first letter, alternated between guard and tackle. His perseverance and spirit are to be envied. He will be a good Panther footballer for the next two years.



### HENRY HANSEN

Height 6' 1" Weight 180 lbs.

"Hank" has grown from a 160 pound boy to a 180 pound man all in one year, giving us plenty of reason to believe that he will go places in the next years. He is a wise cracking tackle.

### CHARLES WHITNEY

Height 5' 11" Weight 155 lbs.

This was "Chuck's" first letter, but he has two more years in which to bolster York's squad from his end position. He has shown consistent improvement, and will prove of value, too.



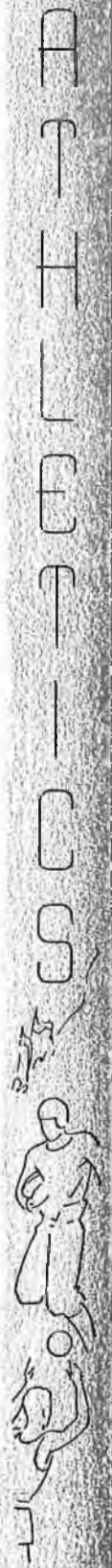
### DONALD BOEHR

Height 6' 1" Weight 182 lbs.

The "heart-breaker" from Henderson, playing his first year of football, was a mighty tough tackle. This year's experience plus his unusual strength will result in a bulwark in York's line next year.



MAX QUICK  
Student Manager







### ROLLAND TONKIN

Height 6' 2" Weight 185 lbs.

Captain and outstanding guard for the second consecutive season, "Sheepo" was a bear-cat on defense. He also contributed more than his share of points.



### JOHN HABERMAN

Height 5' 11" Weight 165 lbs.

Alternating between forward and guard, "Mabel" proved to be a valuable floor man. He has two more years to play for York, having made two letters.



### RAYMOND PETERSON

Height 5' 10" Weight 162 lbs.

"Pete" was the team's utility man, and played all positions well. He could certainly hit the hoop from charity lane, seldom missing a free shot.

### FERDINAND SAINDON

Height 5' 10" Weight 160 lbs.

Lettering his second year at forward, "Kelly" was the team's high scorer in conference games. He had his big night against Wesleyan with twenty points.





### WILBER OVERMILLER

Height 6' 3" Weight 180 lbs.

"Slim" used his height to advantage under the opponents' goal and in defending his own. This was his second letter in basketball, injuries keeping him out last year.



### ROBERT GALE

Height 5' 10" Weight 145 lbs.

"Bob" missed last year because of a shoulder injury, but was in there this year scrapping all the way. He has an exceptionally fine basket eye.

### MAX QUICK

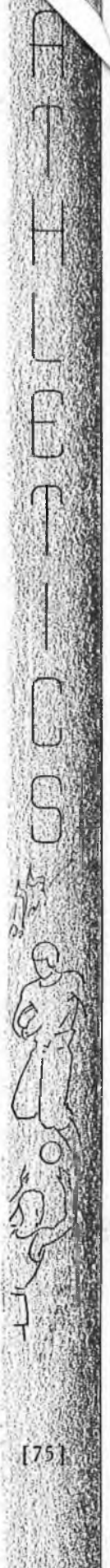
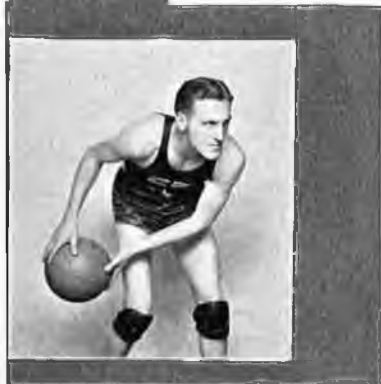
Height 5' 10" Weight 182 lbs.

Max came from the reserves to take a place in the starting line up. He displayed a consistent brand of basketball throughout the season.

### MAURICE THOMPSON

Height 5' 9" Weight 140 lbs.

"Bus" returned to the squad after a year's absence to make his second letter. He is a good passer and a fast man on the court.







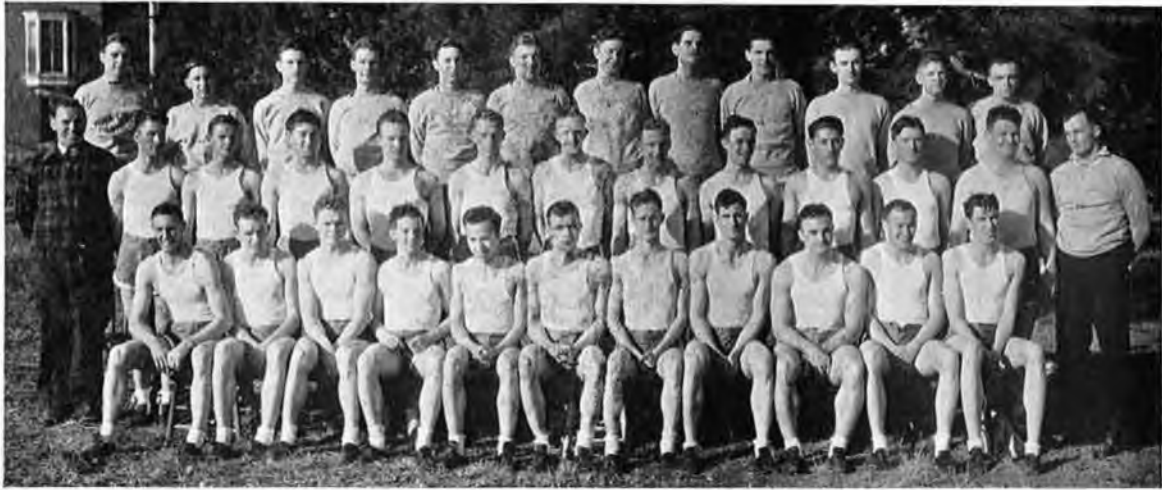
## BASKETBALL

PURSEL  
ALLISON  
LEAMING  
McNURLIN  
BEDIENT  
FEASTER  
BLINN  
FOSTER  
DIERDORFF  
HOLBROOK  
GALLANT  
SAINDON  
THOMPSON  
GALE  
OVERMILLER  
TONKIN  
QUICK  
HABERMAN  
PETERSON

York 37	Globe Trotters	38
York 51	House of David	56
York 37	Hebron	21
York 19	Kearney	33
York 31	Wesleyan	51
York 23	Midland	32
York 19	Kearney	39
York 30	Doane	47
York 28	Hastings	39
York 40	Wesleyan	51
York 35	Western Union	37
York 23	Midland	33
York 34	Doane	30
York 20	Peru	52
York 34	Hastings	41

York's wins on the basketball court were scarce this year, but with the exception of Captain Tonkin the whole squad will be back for another season. The team played many close games, the issue often being in doubt up to the final whistle.

As the season was drawing to a close York pulled the "giant killer" act once and put Doane out of the conference race by a score of 34, to 30. The fellows always played hard and clean, the way all York College representatives do.



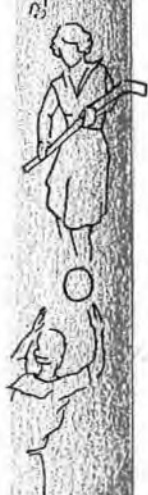
## TRACK

The 1937 track squad experienced a very successful season. Kearney, Doane and Hastings, were defeated in dual meets. York also took a triangular meet from Wesleyan and Doane, and finished second in the conference. Fourteen lettermen return for competition this spring; the team losing Captain Cecil Smith, holder of the conference high hurdle record, and Gilbert Fellers winner in the shot put.

Prospects are bright for another fine track season. York College followers are pinning their hopes on such men as Captain Merle Blinn who competes in the middle distances, Paul McLaughlin in the high jump and broad jumps, John McLaughlin in the pole vault and javelin, and Max Quick in the broad jump, high jump, shot put, and discus throw. In the track events, Rex Lutz, John Haberman, and Walter Ekdahl will take care of the sprints, Robert Spore, Jarvis Cobe, and Barney Rees will run the two mile, while Henry Bergen will handle the mile, Vaughn Leaming and Rolland Tonkin are counted on for the 880 yard run and Dan Wright and Tonkin will run the quarter. A fast stepping relay team will be composed of Ekdahl, Lutz, Tonkin, and Haberman. All of these men are letter men.

There is also talent among the freshmen. The most promising is Elmer Buller, crack miler. Kenneth Willits, a second year man, is making progress in the discus. Other men will undoubtedly strengthen the squad as the season progresses. Prospects are indeed bright.

PETERSON  
 STEVENS  
 HERRICK  
 MILLER  
 HOLBROOK  
 HANSEN  
 MATTISON  
 MATTOX  
 FOSTER  
 SAMSON  
 WIDGA  
 PATTERSON  
 GALLANT  
 BULLER  
 GREEN  
 SAINDON  
 LEAMING  
 SCHMIDT  
 EBERHART  
 THOMPSON  
 PRICE  
 MANZANARES  
 FRIESEN  
 WILLITS  
 J. McLAUGHLIN  
 HABERMAN  
 BERGEN  
 QUICK  
 EKDAHL  
 REES  
 COBE  
 BLINN  
 TONKIN  
 LUTZ  
 WRIGHT  
 P. McLAUGHLIN





## “Y” CLUB

- EKDAHL  
McCONNELL  
BOEHR  
MARVEL  
J. McLAUGHLIN  
HANSEN  
WILLITS  
FEASTER  
THOMPSON  
ALLISON  
LEAMING  
COBE  
BERGEN  
GALLANT  
BULLER  
HABERMAN  
WHITNEY  
PETERSON  
REES  
CURNUTT  
DIERDORFF  
DEEVER  
BLINN  
EBERHART  
TONKIN  
BISSET  
P. McLAUGHLIN  
QUICK  
LUTZ  
GALE  
SAINDON  
WRIGHT  
CARLSON  
BEDIENT

The “Y” Club is an organization for all lettermen. Besides earning an official “Y” in at least one intercollegiate sport, the member must complete twelve hours of college work. The club now has an active membership enrollment of thirty-five; the most it has ever had. Active members are those who are taking college work, although membership is for life.

The organization is steadily improving its work on the campus, which is to help organize and regulate athletic activities, and to be personally interested in all athletes. This is done, to a great extent, at the regular monthly meeting held in the college dining room.

The club sponsors the buying of sweaters. There are two of these sweaters, one of which is bought the semester after the athlete has earned his first letter, the other is for all graduating seniors who have met the necessary requirements.

President . . . . . Barney Rees  
Sec. and Treas. . . . . Rolland Tonkin



## W. A. A.

The Women's Athletic Association sponsors all athletic activities for women on the campus. Hiking, basketball, volley ball, kittenball, and roller skating are popular sports. Each spring a tennis tournament is held. The winner receives a silver trophy which she keeps for a year and which becomes the permanent possession of the girl who wins it three consecutive years.

The girls began their activities in the fall with a picnic and initiation of new members.

Last year the W. A. A., with the help of the York High School G. A. A., sponsored an invitation play day for the girls of neighboring high schools. This year the girls cooperated with the York High School in holding a play day in the new gymnasium at the high school. Invitations were sent to college W. A. A.'s as well as high schools.

The activities of the year are always concluded by an over-night hike, a baseball game, and the election of officers for the following year. We feel the organization is very worth while in that the girls receive a great deal of enjoyment as well as healthy exercise and they make many good friends.

JARAMILLO  
 STRICKLER  
 JOHNSON  
 SHIRK  
 MOHLER  
 CLAYTON  
 MORAN  
 BUTTERMORE  
 COBE  
 ERICSON  
 WAKELIN  
 HALL  
 DRAKE  
 RINKER  
 HOOVER  
 HOOFNAGLE  
 HARRIS  
 SPEECE  
 LIVERS  
 LUTZ  
 SMITH  
 RASP  
 LUMBUS  
 FRIEDEN  
 HEINS  
 MILLER  
 du RAND

President . . . . Lucille Heins  
 Vice-President . . . Lois Miller  
 Secretary . . . . . Verlon Lutz  
 Treasurer . . . . . Norma Harris  
 Sponsor . . . . . Zelda M. Wakelin



f e a t



U R E S



DULCIE HOOFNAGLE

PANTHER SWEETHEART

Chosen by the 1937 football squad as its sweetheart, and was honored at the annual football banquet.





ROLLAND TONKIN

**REPRESENTATIVE Y. C. AND  
FOOTBALL MAN**

Selected by the students as the most representative man on the basis of character, scholarship, and leadership; also elected by the football squad as its representative man.

THE UNIVERSITY OF MICHIGAN



GWENDOLYN HOOFNAGLE

### HOMECOMING QUEEN

Chosen by popular vote to reign over the Homecoming and Parents' Day in the fall.



BERNICE STRICKLER

#### REPRESENTATIVE Y. C. WOMAN

Selected by the students as being the most representative woman on the basis of character, scholarship, and leadership.

Y. C. WOMAN



## Attendants

- SENIORS:  
Lois Stoskopf  
Bernice Strickler
- JUNIORS:  
Norma Harris  
Gwendolyn Hoofnagle
- SOPHOMORES:  
Marjorie Cook  
Mary Jean Buttermore
- FRESHMEN:  
Lenora Leslie  
Maxine Hoover
- BUSINESS COLLEGE:  
Catherine Woolever  
Floriene Lautenschlager

## MAY DAY

The May Fete, which is sponsored each year by the Y. M. C. A. and the Y. W. C. A., was held on the college campus on May 27. At this time Dorothy Bittinger was crowned Queen of May and presided over the May Day festivities.

The May Queen is chosen by a vote of the student body. Activity in Y. W. C. A. and popularity warrant the honor.

Each class selects its representative to attend the Queen, and another attendant from each class is chosen by the May Queen herself. The Y. W. C. A. president, Lois Miller, was maid-of-honor.



1. Folk Dancer
2. The Throne
3. Folk Dancer
4. Paying Homage
5. The May Queen
6. Flowers for the Queen
7. Attendants
8. Her Highness
9. Folk Dancers
10. May Pole Dance
11. Maid of Honor



THE UNIVERSITY OF CALIFORNIA





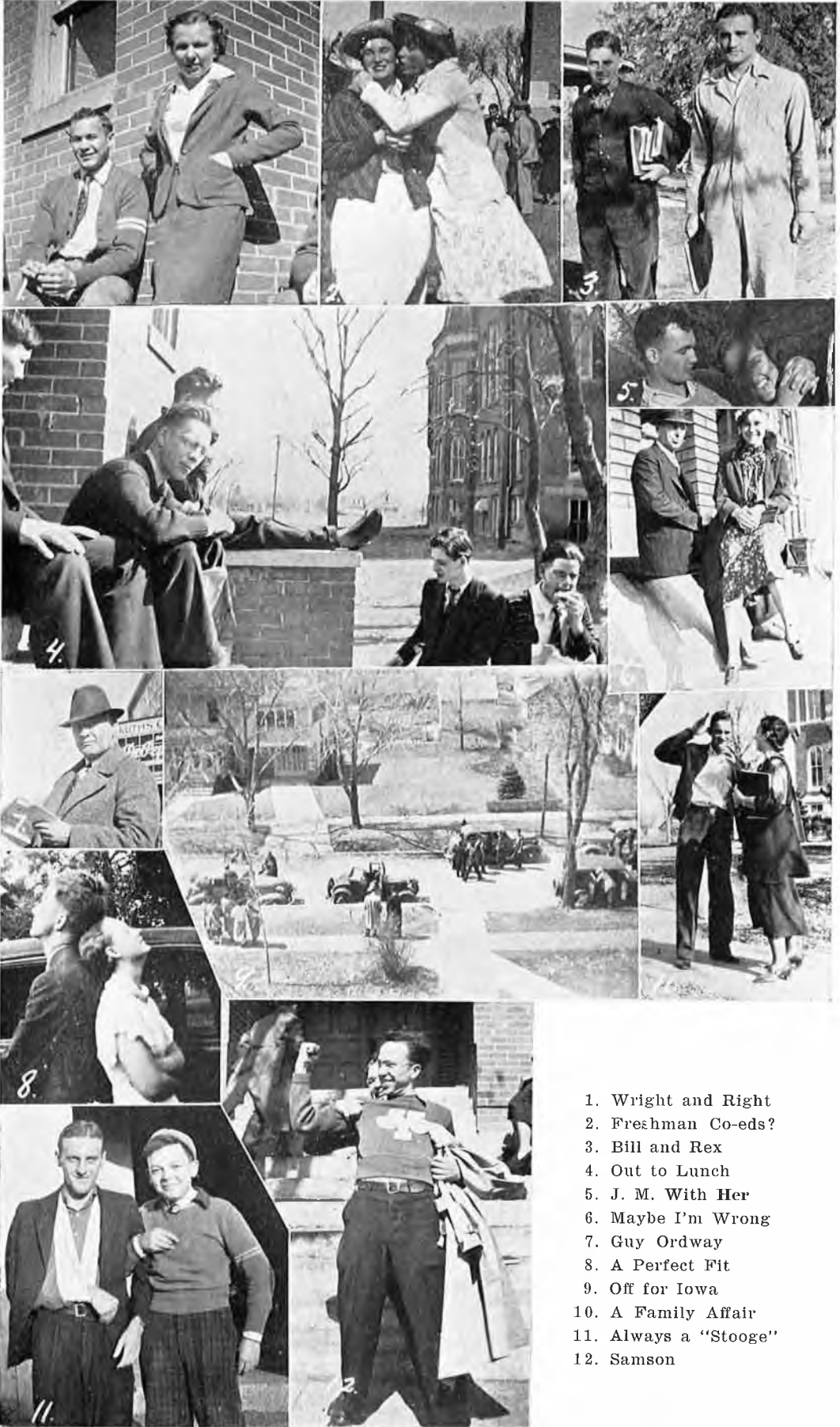
## 1937 HONORARY SELECTIONS

- |                             |                                       |
|-----------------------------|---------------------------------------|
| Irene Hofgard . . . . .     | Panther Sweetheart                    |
| Warran Witham . . . . .     | Representative Y. C. and Football Man |
| Dorothy Bittinger . . . . . | Homecoming Queen                      |
| Leta Yost . . . . .         | Representative Y. C. Woman            |
| Flora Blakeley . . . . .    | May Queen                             |



W  
O  
R  
L  
D  
S  
T  
R  
E  
E  
T  
S  
A  
N  
D  
B  
U  
I  
L  
I  
N  
G  
S





1. Wright and Right
2. Freshman Co-eds?
3. Bill and Rex
4. Out to Lunch
5. J. M. With Her
6. Maybe I'm Wrong
7. Guy Ordway
8. A Perfect Fit
9. Off for Iowa
10. A Family Affair
11. Always a "Stooge"
12. Samson



1. Our Bravest
2. Hours of Study
3. Our Track Captain
4. Our Golf Team
5. "Gus," Our Senator
6. Our Chapel Team
7. Our Gal Sal

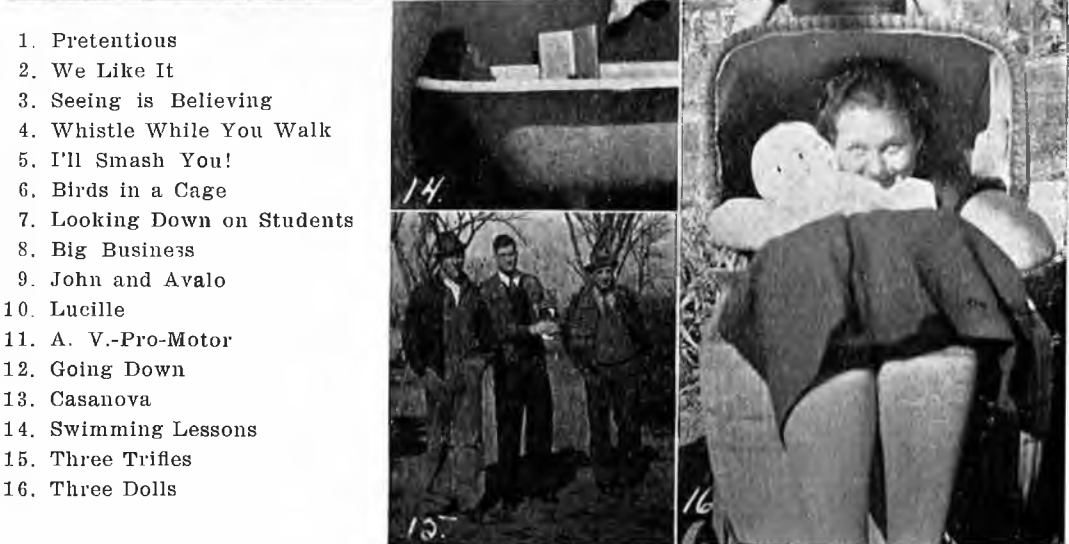


THE UNIVERSITY OF MICHIGAN  
 YOUTH CENTER  
 YOUTH CENTER



1. Us On a Bus
2. The Dipsy Doodle
3. I Can Dream, Can't I?
4. A Young Man's Fancy
5. Goodnight Angel
6. Heigh-ho
7. You're an Education in Yourself
8. I'm Hitting a New High
9. Thanks for the Memories
10. Please Be Kind
11. You're the Cream in My Coffee
12. Yours and Mine





1. Pretentious
2. We Like It
3. Seeing is Believing
4. Whistle While You Walk
5. I'll Smash You!
6. Birds in a Cage
7. Looking Down on Students
8. Big Business
9. John and Avalo
10. Lucille
11. A. V.-Pro-Motor
12. Going Down
13. Casanova
14. Swimming Lessons
15. Three Trifles
16. Three Dolls

DEPARTMENT OF RECORDS  
 1931



1. Flibbertigibbet
2. Fine Stuff!
3. Irene
4. Oh Boys!
5. It Might Have Been Worse
6. Freshman Vogues
7. Popo
8. We Three
9. Inside Looking Out

# 1937-CALENDAR-1938

## SEPTEMBER

- Sept. 9—Freshmen repected at Gym (Speech by J. R.)
- Sept. 10—Prof. Doty gets his big chance. "Building Attitudes" (that night) Another reception—McCloud Hotel.
- Sept. 13—A nicpic (these freshmen have all the fun).
- Sept. 16—Upperclassmen still arriving.
- Sept. 17—Jolly-up—did we have fun or did we have fun!
- Sept. 24—First blood, York vs. McCook.
- Sept. 27—To this bright verse I have no claim  
Nor do I merit any blame  
Go on go on go on go on  
Go on go on go on go on.

## OCTOBER

- Oct. 1—Dana didn't do it.
- Oct. 8—It seems that it rained in those days,  
Doane game.
- Oct. 14—Chapel for those who used their beans  
Dedicated to York scholars,  
Examples they for us to follow.  
Here we see the study fruit  
The smart, the wise, the great astute  
The super brainy element  
"York sages", "The Intelligente".
- Oct. 15—Dollars to doughnuts on York—Sterling college.
- Oct. 22—Pops and mammas came to town  
To sorta take a look around  
The campus of the alma Mater  
Of the hopeful son or daughter,  
Listened to the chapel speeching  
Puns and parables and preaching,  
Saw the freshmen through their paces  
(Upperclassmen won the races),  
Heard York College panthers roar  
While Western Union tried to score,  
Got a smattering of knowledge  
What its like to be in college.
- Oct. 25—Bucket Brigade mops the walk.

## NOVEMBER

- Nov. 1—Decide to start up a fire even if it does burn the paint off the new furnace.
- Nov. 5—Yoncordia vs. Cork.
- Nov. 11—Dan Wright's game—Midland.
- Nov. 12—Football Banquet—"Slim" Overmiller elected captain.
- Nov. 16-25—Preparation for vacation.
- Nov. 25-27—Punkin pie and stuff.

## DECEMBER

- Dec. 3—Round the Worlder's defeat York in overtime period.
- Dec. 10—Strangers at Home.
- Dec. 11—York defeats Hebron quintet while band plays.
- Dec. 13—Ye old country school room—Freshmen pay off for defeat Homecoming Day.
- Dec. 14—Big, bad, bearded basketballers bowl over York.
- Dec. 16—Kearney gets ball game and the band gets uniforms, maybe.
- Dec. 17-Jan. 3—Vacation, vacating, vacated, vacant.

M  
E  
T  
R  
O  
P  
O  
L  
I  
T  
A  
N  
C  
I  
T  
Y  
C  
O  
L  
L  
E  
G  
E  
R  
E  
C  
O  
R  
D

## JANUARY

- Jan. 4—McVey makes new year's resolution and turns over a new lump of coal.
- Jan. 7—At the half it looks like York, at the end it looks like h——. Midland vs. York.
- Jan. 11—The last (we hope) showing of "The Origin of Man".
- Jan. 14—Junior-Senior party.
- Jan. 21—I think that I shall never see  
The members of the faculty  
So realistically portrayed  
As when—(inspiration fails me, but you remember the Sophomore Reception).
- Jan. 22—Hastings there 39-28 (!?!\*...!).
- Jan. 26-28—Exams. (Oh well, what was eighteen weeks in my young life?)
- Jan. 28—Semester Ends.

## FEBRUARY

- Feb. 4—Y. M.-Y. W. Reception
- Feb. 7—"Welcome townsmen" quoth the "Y" Club.
- Feb. 10—Senior Recognition Day (Four or more years in college deserves some kind of recognition.)
- Feb. 11—Zetas pull Globe Trotter act on Pals. C. E. party at the U. B. church. Oh Boy!
- Feb. 18—Doane defeated on their own floor.
- Feb. 24-25—"Old Virginia Minstrels".
- Feb. 28—Recital by H. E. Morgan—an orchid to you.

## MARCH

- Mar. 4—Y. W. Banquet—"Her necks dirty." Remember?
- Mar. 7-8-9—Calling all debators . . . Calling all debators . . . Go to St. Paul . . . That is all.
- Mar. 10-11-12—State Debate Tournament, Kearney.
- Mar. 16—Education Conference starts.
- Mar. 18—Recruits a la Mode.  
One stiff neck  
One broken elbow  
Three or four twisted vertebrae  
A dash of cuts and bruises.  
Juggle thoroughly in a house trailer and leave along the highway to dry.
- Mar. 20—"Rose on the Dial", third verse.
- Mar. 31—Faculty Reception.

## APRIL

- April 1-6—Spring vacation and the trip through Kansas.
- April 14—Mothers and Daughters Banquet.
- April 16—Running, run, runned, ruined. Hastings Relays. Paul McLaughlin wins High Jump.
- April 22—Histrionic Play. "Jane Eyre."
- April 23—Annual High School Invitational Track Meet.  
A beautiful day, and a huge success.
- April 28—Chorus program at U B. church.
- April 29—Faculty Party
- April 30—Track meet at Doane.

## MAY

- May 2—"Y" Club Picnic.
- May 3—Wesleyan at York, Track meet.
- May 13—Junior-Senior Banquet.
- May 20—Conference meet at Hastings.
- May 27—May Day. Dorothy Bittinger reigns.
- May 29—Anniversary of Christian Associations. Baccalaureate.
- May 30—Senior class day program.  
Pals and Zetas dine.
- May 31—York Scholars tea. (Delta Lambda Mu).

## JUNE

- June 1—The Commencement of ——? Field Day.  
By now we know that it pays to cram—even if our Prof.'s don't.  
THAT'S ALL FOLKS.



VERY GOOD JOKES ARE SO FEW  
PLEASE DON'T GET MAD IF THE JOKE IS  
ON YOU.

Prof. Morgan—"And the father of the prodigal son fell on his neck and wept. Why did he weep?"

Everett Berry—"Huh, I guess you'd weep too, if you fell on your neck."

---

Jean Mattingly—"Can a person be punished for something she hasn't done?"

Prof. Doty—"Of course not."

Jean—"Well, I haven't done my psychology."

---

Maxine Hoover—"The idea, my napkin is damp."

Vesta Beam—"Maybe that's because there's so much due on your board."

---

Mr. Noll—"Why don't you speak louder when you recite?"

Barny Rees—"A soft answer turneth away wrath."

---

Doris Goodrich—"Something tells me you are in love."

Marie Bomhoff—"Wait'll I see that roommate of mine."

---

Wayne Dahlstedt—"Are they still going together?"

Lodema Frieden—"Who?"

Wayne—"Your feet!"

---

Early to bed and early to rise,  
And your gals run off with other guys.

---

Some students who use lots of soft soap  
may get clean through college.

---

Three ways to work your way through college:

1. Wire your father for money.
  2. Phone pop for dough.
  3. Write the old man for cash.
- 

The freshman is grassy and grows,  
The sophomore is sassy and blows,  
The junior is classy and knows,  
The senior is brassy and crows.

# HULITT CONSERVATORY

It has many and varied nomenclatures, this building of ours. It is deversely known as Con, dining room, laundry, kitchen, boarding hall, home, mess rooms, reception hall, music conservatory, whamdoodle, flim-flammy, college conservatory, York college conservatory, college dining hall, York college dining hall, girl's dormitory, the dorm, the filling station, the date bureau, the practice hall, Dean's residence, cook's hang-out, dishwasher's purgatory, spoonhandle, Hulitt hall, Hulitt con, Hulitt conservatory, and many others.

Seldom do those who so lightly apply these cognomens stop to think of the origin of the hall through whose heavy doors they push daily, and up and down whose stairs they so often tread. But the name, Hulitt conservatory, for that is probably the most fitting, has an origin, like everything else, and a very interesting one.

Once upon a time, as Mother Goose would

tell it, there lived a man in Ohio. He had a long gray beard, which didn't seem so odd in 1902 as it might seem now, and eyes that frequently twinkled. His name was John Hulitt, and he was a very loyal member of the United Brethren church. In fact, he was so loyal, and so much interested in the education of the young people in the church, that, when President Schell, of York College, told him about how badly a new building was needed here to house some girls and some pianos, he offered to give \$5,000 toward the construction of such a building. After so fine a beginning, some more of the United Brethren people got together, and raised the rest of the money necessary and in 1902 Hulitt Hall was completed.

Mr. Hulitt has long ago been laid away, and many have forgotten him, but the building which he so generously helped to erect will stand for many years to come as a living monument to his memory.

## QUIZZES

Among all of the illustrious personages who have been on the College campus during the past year, one very well-known visitor has not received the proper publicity due his estate. However, despite the deep mystery shrouding his brief sojourn here, the Marathon, ever alert and on the job, has unerringly gained the true facts concerning the visit of Professor Quiz, and herewith presents them to the public.

Being a professor himself, Mr. Quiz quite naturally moved among faculty circles. And, as is his wont, he questioned those with whom he came in contact.

Professor Quiz: Professor Bissett, from the depths of your long experience as a member of society, and instructor in social problems, what would you say a man should do to live the longest make the most money, and be the happiest?

Professor Bissett: As I've said in chapel talks for years and years, walk correctly, and all these others shall be added unto you.

Professor Quiz: Professor Morgan, how many dates did you have with your wife before you asked her to marry you?

Professor Morgan: I cannot remember. It's as I always tell my history students, dates are not a burden to the memory, but an illumination to the soul.

Professor Quiz: With your eminent position as a chemist and a physicist, Professor Haugan, could you tell me how you would play Wink'em?

Professor Haugen: Speaking from the standpoint of my previous experience in Literary circles, I stand behind two chairs, both chairs being occupied by beautiful young maidens. Other young men stand in similar positions in a circle. Suddenly one of my chairs is empty. That is something that I cannot explain, not being able to understand it, myself. Then I wink at the girl in my other chair, and she moves into the empty seat. At this point everyone laughs, and that is something that I cannot understand, either.

Professor Quiz: Dean Bachman, just how do you proceed in solving the many weighty problems that must fall upon your shoulders as dean of this institution?

Dean Bachman: What Lucille says is always right.

Professor Quiz: Professor Doty, as a prominent psychologist, you should be able to tell me the number of inhabitants in the Nebraska state insane asylum.

Professor Doty: I cannot tell you that, but I do know that thirty odd people went on the chorus trip this spring.

# PROPHECY

Ten years after she graduated, Mrs. Oscar J. Jones has returned to the campus to attend dedication services for a new dormitory. She is talking to her son, Junior.

"Yes, Junior, it gives me untold pleasure to be here on this campus after so many years. (Junior, stand up straight and close your mouth!) A college education never hurt anyone who was willing to learn something afterwards.

"Why is the grass so brown, Junior, of course it isn't dried up. It's a special kind of grass. They've planted it here since 1937. The grass was green then and so many freshmen got stepped on and run into that year because they couldn't be distinguished from the bright green shade of the grass.

"Junior, look around this campus, just take a good look now. It's changed some even besides the new dormitory. It was on these walks that every morning, every morning, Junior, without fail I went to a 7:30 class. And let me tell you, we were all very proficient sleep walkers. I always had hopes of not having a 7:30 class but when I was a freshman and a sophomore, all freshman and sophomore subjects came at 7:30. Oh, I thought at the beginning of my junior year, no 7:30's for me. But that year, Junior, they decided to change things and so the Junior and Senior subjects at 7:30. Guess they thought it must be habitual by now.

"Well, Junior, let's go into the reception room now. My, aren't these halls lovely, Junior? I hope you can live in a dormitory some day, Junior. It's very thrilling—but never try to keep a diary. I tried it—it doesn't work—not in a dormitory. By the way, Junior, I'm certainly glad you don't talk in your sleep.

"Junior, brush your hair down and try to look intelligent—everyone's looking at us. Junior, why did you wink at that woman over there—that's Bertha. Whad'ykn', the great soloist. She's been married twice; she used to be Bertha Riggs.

"Oh, hello, Bertha, dear. Say, I've often wondered—how did you meet your second husband? It was quite romantic, you say? You were crossing the street with your first husband when your second husband came along in a car and ran him down. I see, that was the beginning of your friendship—heh, heh.

"See that muscle-bound man seated in the window, Junior? Yes, you're right, that's

Knute Rockne II. His name is Rolland Tonkin. He's a gorgeous coach, Junior. He was one of our best Panthers. No, no, Junior, a panther itn't a man that maketh panth!

"What woman, Junior? Oh, the one in white—her name used to be Lois Miller. I guess she's dressed in white, Junior, because she's a recent bride. Brides wear white as a symbol of their happiest day. Junior! You do say such things! How do I know why her husband is dressed in black?

"Quick, Junior, look at that man over there—the one with the glasses on—that's Waldo Dahlstedt. He was president of the sophomore class in 1937. One thing about him, Junior, he hated women and he was glad he hated 'em 'cause if he hadn't hated 'em, he'd have liked 'em and he hated 'em. I'll never forget the time in current history class when Mr. Doty asked, 'Waldo, who's the speaker of the house?' Waldo promptly answered, 'Mother'. Clever, wasn't he, Junior?

"That bald-headed fellow next to him is his brother Wayne. He used to have lots of hair but he lost it from worry. I don't know what about, Junior, unless it was about his hair.

"That pompous-looking gentleman, Junior, is Senator Branson. He's running for re-election now. His platform is the single tax. Oh, it's a tax on bachelors, Junior. Anyhow since he's taking this stand, when he runs, he'll have a walk-over.

"Junior, don't smile at that man. I haven't spoken to him for five years. That's Dr. Wilbur Overmiller. It all happened 'cause I couldn't sleep one night. I called him at three A. M. and I says, says I, 'Oh, I can't sleep'. And he said, 'Hold the wire and I'll sing you a lullaby.' The very idea of his saying such a thing.

"Why, hello, Vesta Beam, why do you look so depressed? You're thinking of your future. What makes it seem so hopeless? Your past! You poor girl.

"Junior, let's go over and talk to Miss Callender. She's one of our English professors. Yes, Miss Callender, this is Junior. He's really a prodigy—just ask him some question. Go on, Junior, answer her. What was the occasion for the quotation, 'Why don't you speak for yourself, John?' What, Junior, Miles Standish was trying to get a blind date for his roommate, John Alden. Oh, Junior?



## CLOSE YOUR EYES AND IMAGINE:

Abie Franz griping.  
Vaughn Leaming chewing gum.  
Mary Jean Buttermore studying in the library.  
Russell Dunlop being on time.  
Lorena Estey dumb.  
Dulcie Hoofnagle homely.  
Lois Miller as the clinging vine type.  
Dorothy Bittinger leaving work for anyone else.  
Sease Hoofnagle unpopular.  
Tommy Allison without hair oil.  
Fred Carlson in a hurry.  
Mayo Statz in a baby buggy.  
Rex Lutz enjoying chapel.  
Glenn McPherson six feet tall.  
Miriam Lease without a date.  
Merle Blinn punless.  
Lois Stoskopf with stringy hair.  
Lawrence Deever bald.  
Doris Mills silent.  
Reinold Huebert with a date.  
Henry Bergen goin' to town.  
Sally Rasp unhappy.

## THINGS WE CAN'T DEPEND ON

T-hings in general.  
H-omer's puns.  
I-gniting Dean Bachman's ire.  
N-ever being late to class.  
G-etting a ride down the hill.  
S-leeping through Prof. Doty's classes.

W-eather being perfect.  
E-ver getting 96 in Psychology.

C-allender's class without a notebook.  
N-otes in class.  
A-lways bluffing in Miss Slee's classes.  
T-anks of punch at a reception.

D-itching classes and getting high grades.  
E-dited French books.  
P-oor marks getting us Summa Cum Laude.  
E-xams that are a snap.  
N-ext week's allowance.  
D-ipsy-doodle.

O-urselves.  
N-uts.

# SAFEWAY

MEATS - GROCERIES - FRUITS - VEGETABLES

GILLAN BAKING CO.



S. W. Gillan and Sons

ODEN GILMORE

ATTORNEY

First National Bank Building

Phone 243

York, Nebraska

DR. C. H. BRUGH

DENTIST

American State Bank Bldg.

Phone 477

Residence, 469

A. A. METZ

DON R. METZ

METZ MORTUARY

ANCHOR YOURSELF TO THE BEST



Established 1887

HARRISON NURSERY CO.

Anderson-Caldwell  
Lumber Co.

Phone 39

LUMBER

COAL

PAINT

THE FOOD CENTER

Quality Meats and Groceries

"As They Should Be"

WE CLEAN RUGS

Hesler Cleaning Works

114 W. 6th St.

Phone 446

York, Nebr.

FREE DELIVERY SERVICE

SWANSON MOTOR

FORD SALES & SERVICE

York, Nebr.

Phone 26

We Are Fair and Easy to Deal With

1888

YORK

1938

FIFTY YEARS OF PROGRESS

IOWA-NEBRASKA LIGHT AND POWER CO.

# Building An Annual

¶ Noteworthy Year Books are the result of careful planning on the part of everyone concerned. The editor, the business manager, and the staff must have thoroughly in mind just the setting for their compositions and the final effects desired.

¶ The selection of an engraver and printer is therefore of paramount importance. Important, not alone for the quality of workmanship involved, but in the help which they may render in securing beauty of layout, design, and typography.

¶ We take great pride in a record of fulfillment of our obligations as school annual engravers and printers. We are confident that investigation of any of our former contracts will reveal painstaking thoroughness in planning, and unceasing devotion to ideal of craftsmanship.

York Blank Book Company

YORK, NEBRASKA

Capital Engraving Company

LINCOLN, NEBRASKA

COMPLIMENTS OF  
GRAND CENTRAL MARKET  
729 LINCOLN AVE.

Foster Dry Cleaners  
YORK, NEBRASKA  
"Wear Clean Clothes"

YORK FLORAL CO.  
FLOWERS

York, Nebr.

Phone 772

NEW VOGUE

Congratulations to the Class of 1938

Nielsen Chevrolet Company

"Where Most People Buy New and  
Used Cars"

822 Lincoln Avenue

Telephone 20

YORK, NEBRASKA

CARTWRIGHT'S  
MUSIC HOUSE

GAMBLE STORES

WEST SIDE OF SQUARE

AUTO SUPPLIES - RADIOS - HARDWARE  
FRIENDLY SERVICE

SENIORS—

May All Your Hopes Be Realized

DENNIS MEEHAN CO.

CALVIN WEBSTER

J.C. PENNEY CO.

"The Home of Values"

YORK . . . NEBRASKA

BUY IT AT

BAER'S

When Baer Says It's Oak It's Oak  
FURNITURE AND RUGS

W. C. BAER & CO.

YORK, NEBRASKA

FOR BETTER HAT CLEANING

YORK SHINE PARLOR

THE

FAIRMONT CREAMERY  
COMPANY

FIREPROOF

70 ROOMS

McCLOUD HOTEL

Finest in York

SPECIAL ATTENTION GIVEN TO THE SERVING OF PARTIES AND BANQUETS